

TOWNSHIP 2 NORTH, RANGE 10 EAST, OF THE WILLAMETTE MERIDIAN, OREGON

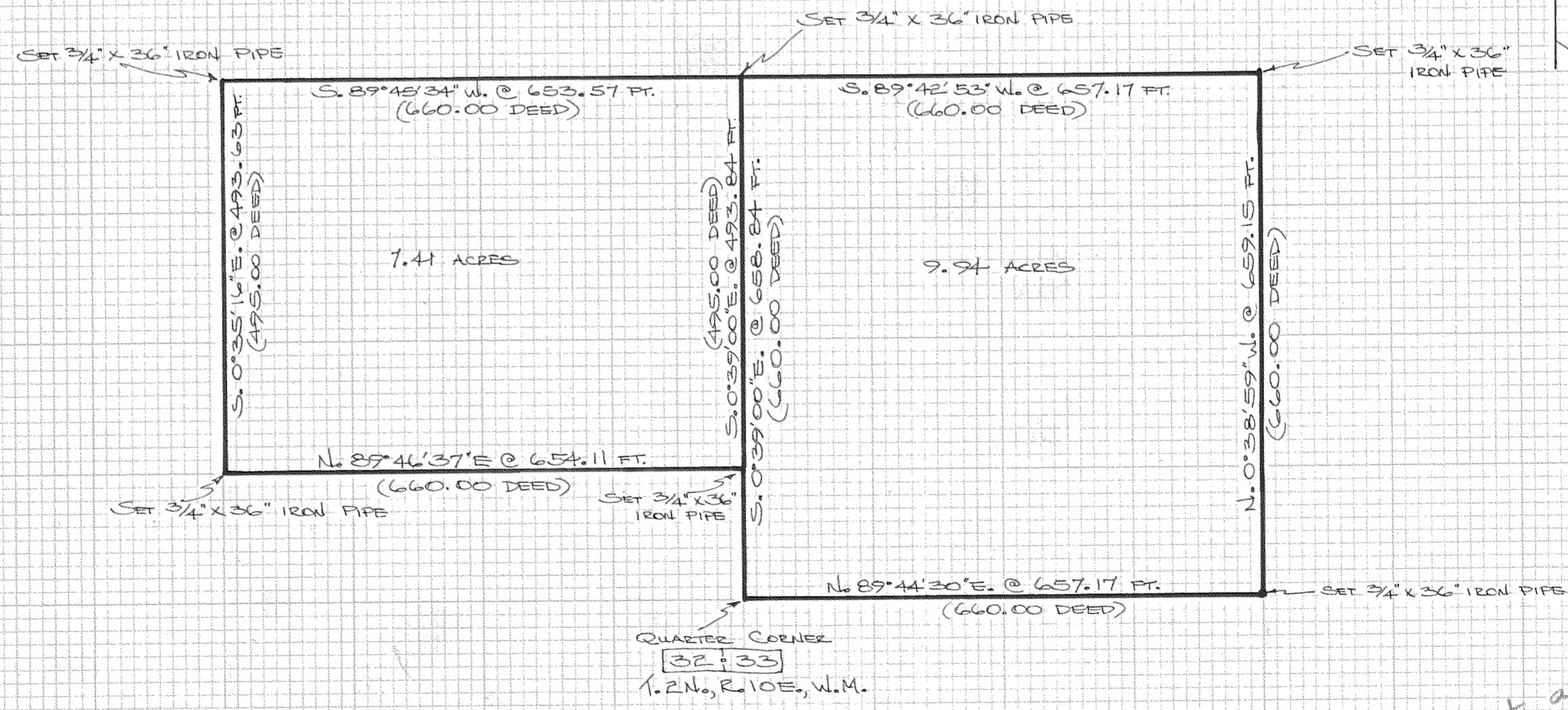
DESCRIPTIVE SKETCH OF THE SUBDIVISION OF SECTIONS 32 AND 33

NARRATIVE:

IN SECTIONS 32 AND 33, T.2N., R.10E., W.M., THERE BEING NO PRIVATE SURVEYS ON RECORD, THE LAND BEING MOUNTAINOUS WITH SECOND GROWTH FIR, PINE, AND SCRUB OAK PREVAILING, THE GOVERNMENT CORNERS NOT BEING PERPETUATED THEREBY NECESSITATING THE EXTENSIVE RECOVERY OF ORIGINAL EVIDENCE, AND THE VALUE OF THE ACREAGE IN QUESTION NOT WARRANTING THE COMPLETE FIELD SUBDIVISION OF SECTIONS 32 AND 33, THE QUARTER SECTION LINE FROM 32.33 TO 32.33 WAS TAKEN AS THE BASIS FOR BEARINGS (CORROBORATED BY SOLAR OBSERVATION AND BY THE QUARTER SECTION LINE FROM 32.33 TO 32.33).

AS THE ORIGINAL U.S. GOVERNMENT NOTES OF 1860 AND 1878 FAILED TO MATHEMATICALLY CLOSE BY WEIGHING EQUALLY BEARINGS AND DISTANCES, THE SECTIONAL SUBDIVISION WAS CALCULATED BY HAVING DISTANCES PREVAIL OVER BEARINGS. AS THE MEASURED DISTANCE FROM QUARTER 32.33 CORNER TO SECTION 32.33 CORNER WAS 11.36 FT. LESS THAN THE ORIGINAL 1878 RECORD (2635.24 FT. MEASURED VS. 40.1 CHAINS RECORD) A DISTANCE EQUATION OF 2635.24/2646.6 WAS USED FOR FINAL LOT DISTANCE.

Stephen Bauer
(PROPERTY OWNER)
1 MARCH 1976



NOTE - This is not a legal survey - It is strictly reference material -
Dan Cron
Aug. 21 1976