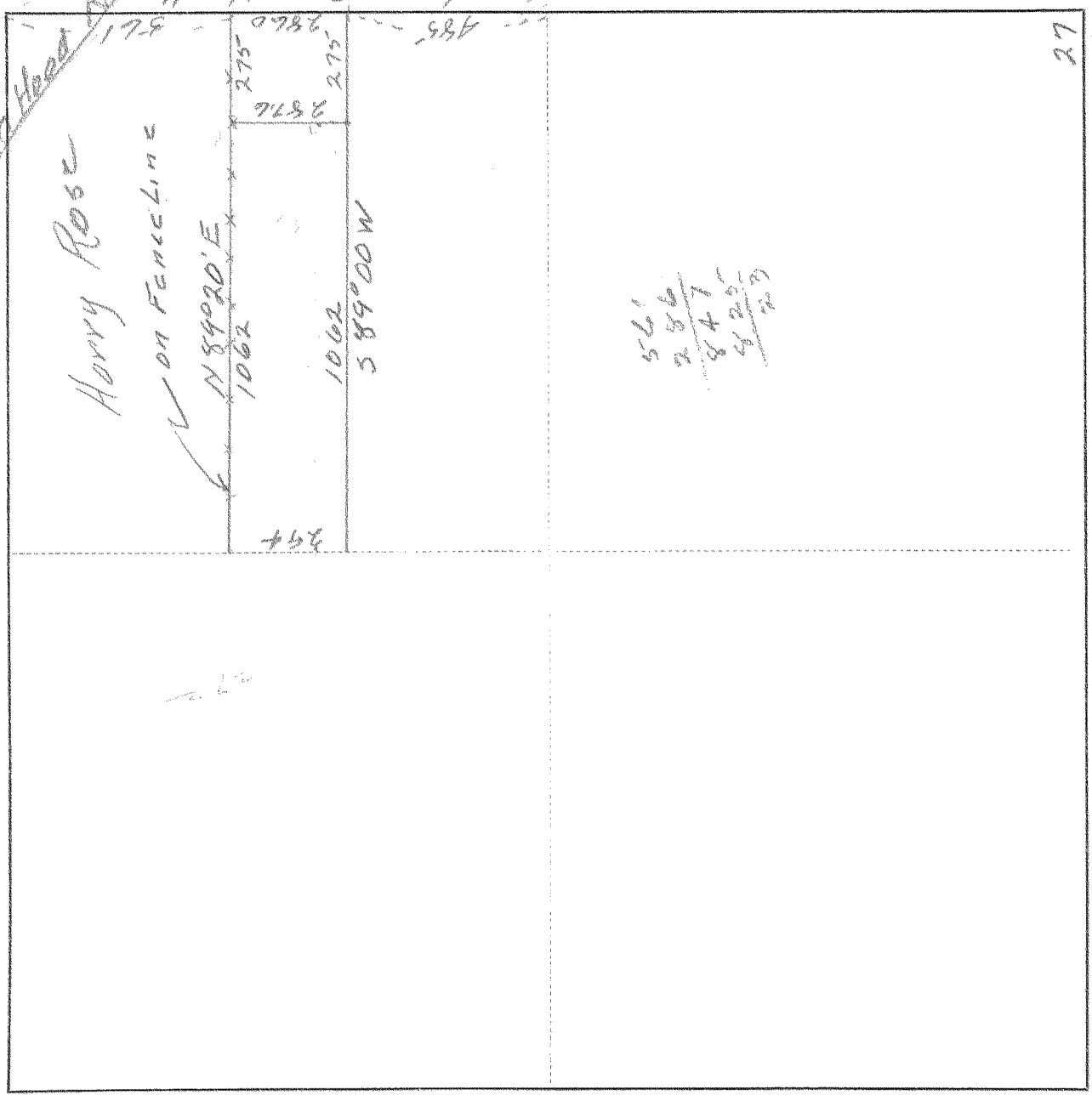


SURVEY IN NE 1/4 SE 1/4, SECT. 27, TWP. 2-N, RANGE 10, EAST W. M.

FOR Harry Rose

DATE Jan. 11 / 54



I do hereby certify that this sketch was made from notes taken during an actual survey by me on Jan 11, 1954, and that it correctly represents the field work of said survey.

Wm. C. Perkins
County Surveyor
Hood River County, Oregon

Helpers _____

ALHAM 102627

1443 7-491