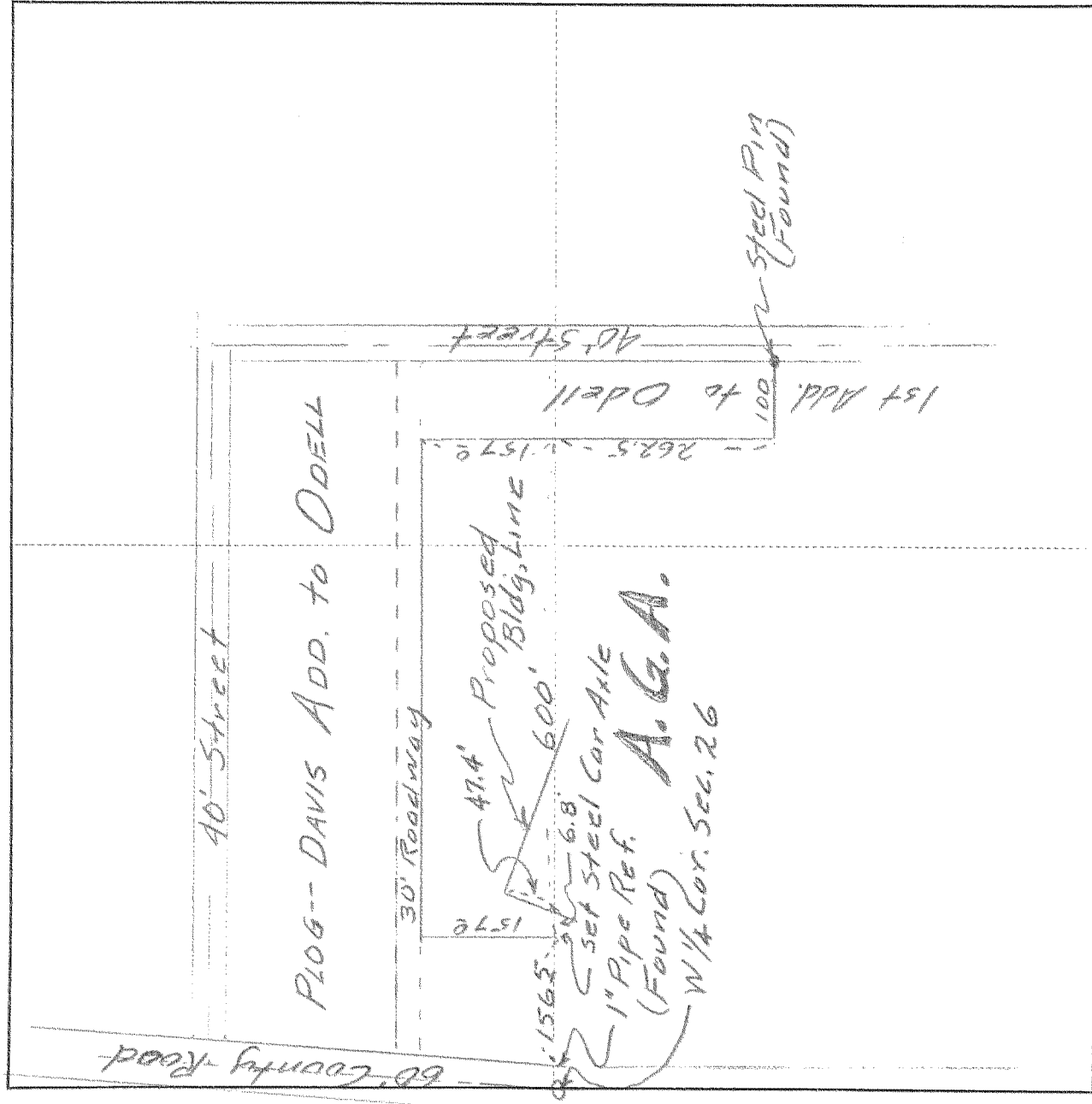


SURVEY IN NW 1/4 , SECT 26 , TWP. 2-N RANGE 10 , EAST W. M.
 FOR A.G.A. DATE Feb. 4, 1954



Scale 1 inch = 200'

I do hereby certify that this sketch was made from notes taken during an actual survey by me
 on Feb. 4 1954, and that it correctly represents the field work of said survey.

Mustel E. Puckham
 County Surveyor
 Hood River County, Oregon

Helpers _____

KILHAM 19267

1440 7-432