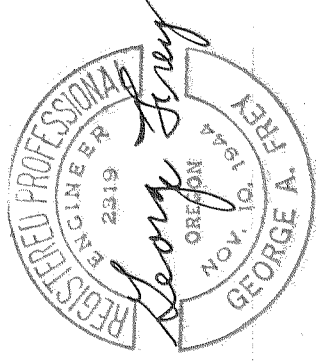
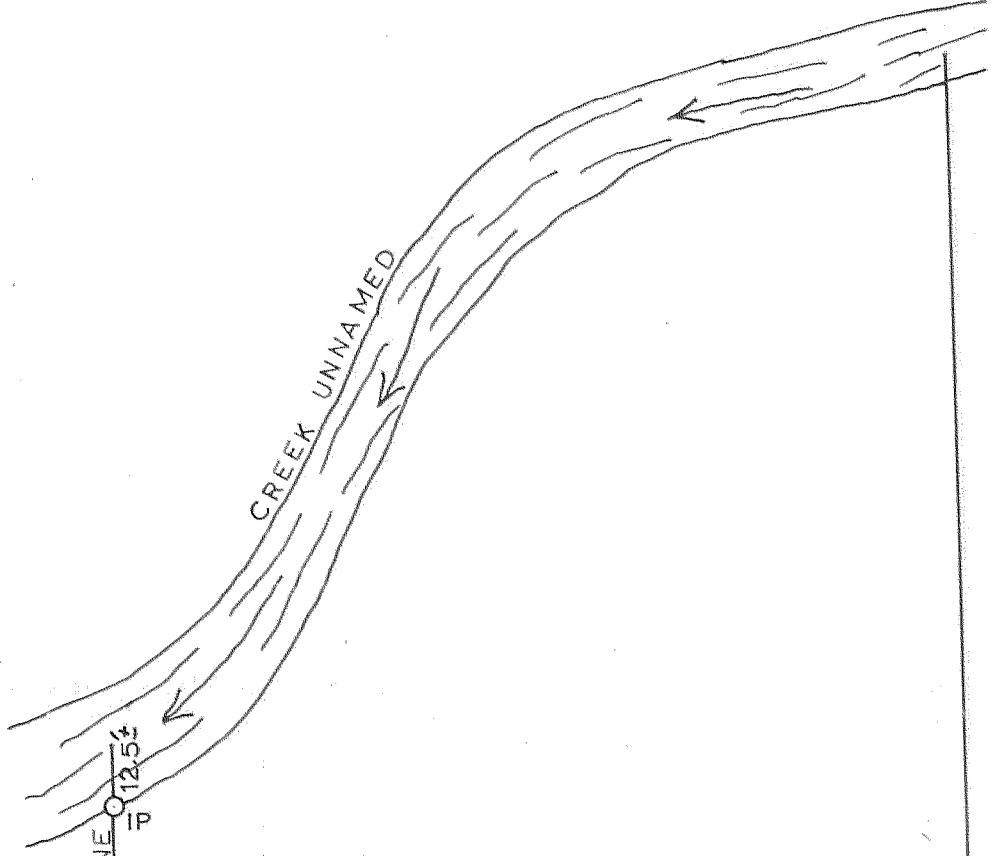


290.55'

181.6' PARALLEL TO N SEC LINE
169.10'

177.45'

323'



7

HOOD RIVER COUNTY SURVEY OFFICE

PLOT PLAN OF BAPTIST CHURCH PROPERTY

IN

NW 1/4 SEC 26 T2N R10E WM

DATE: 29 JULY 66

JOB NO. _____

SCALE: 1in=40 ft.

FILE NO. 14-66

DRAWING: AMN

SHEET 1 OF 1