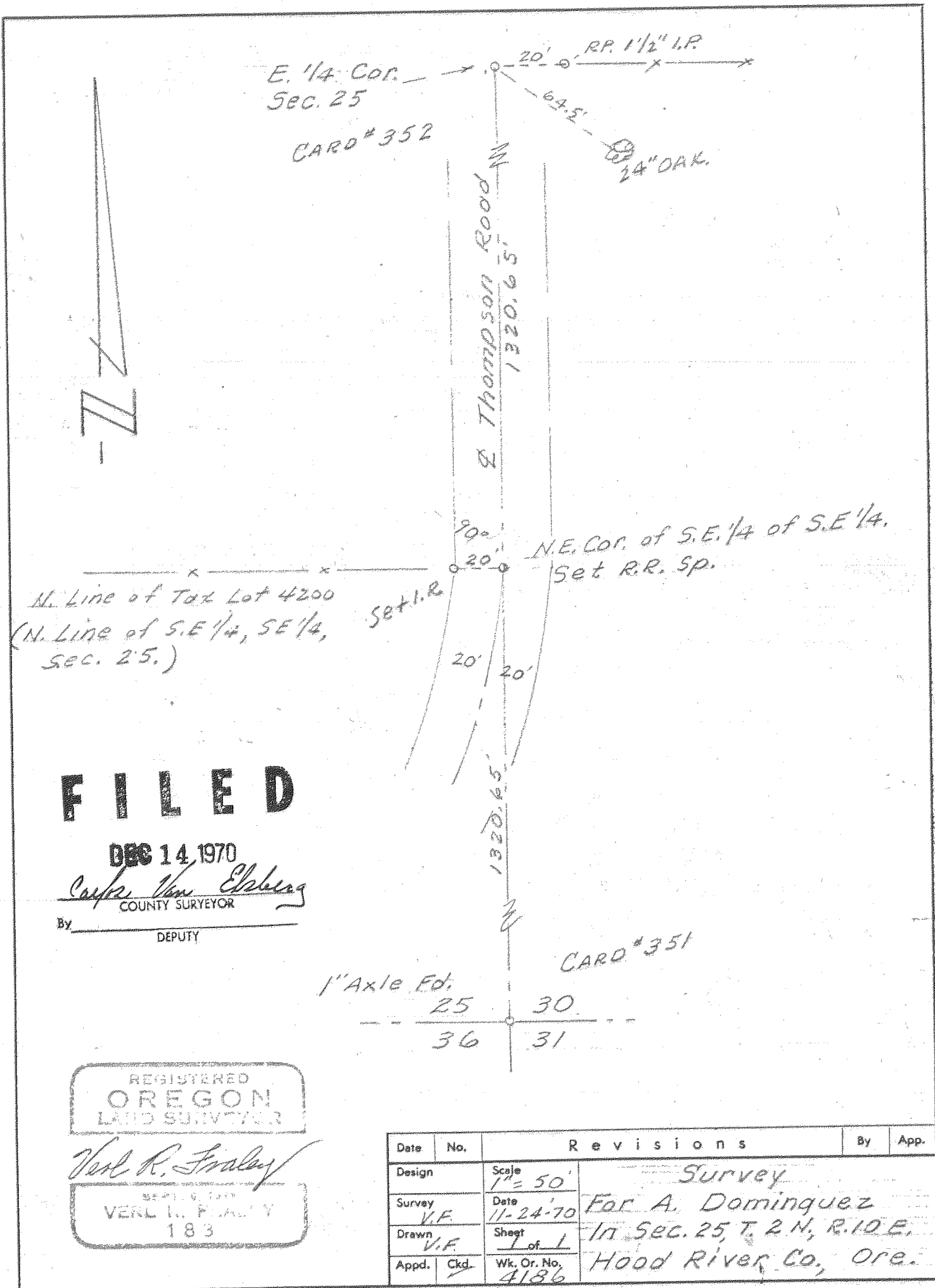


DRWG # 1



FILED

DEC 14 1970

Carole Van Elburg
COUNTY SURVEYOR

By _____
DEPUTY

REGISTERED
OREGON
LAND SURVEYOR

Verl R. Fralley

VERL R. FRALLEY
183

Date	No.	Revisions	By	App.
Design		Scale 1" = 50'		
Survey	V.F.	Date 11-24-70	For A. Dominguez	
Drawn	V.F.	Sheet 1 of 1	In Sec. 25, T. 2 N., R. 10 E.	
Appd.	Ckd.	Wk. Or. No. 4186	Hood River Co., Ore.	

WORK ORDER #4186

November 24, 1970

FIELD NOTES

FOR: Antonio Dominguez, Work Order #4186, Establish N.E. Corner of 1 Acre Tract in S. E. 1/4 of S. E. 1/4 of Section 25, T. 2 N., R. 10 E., Hood River County.

CREW: Ver1 R. Fraley, Registered Oregon Land Surveyor #183
Bob Ulrich, Chainman
Terry Toda, Chainman

DATE: November 19, 1970

WEATHER: Fair

REFERENCE: Tenneson Engineering Corporation 8 1/2" x 11" Map No. 4186

Before starting the field work, an investigation was made in the County Surveyor's office for previous surveys in the area. We obtained a record of the known corners and their accessories in Section 25. Their records showed a 1" axle at the S. E. Corner of Section 25 and a 1 1/2" I.P. 20'E. of the E. 1/4 corner of Section 25. A 20" oak B.T. was also shown for this corner.

To begin the field work, we re-established the E. 1/4 corner of Section 25 from a 1 1/2" I.P. which was 20' E. and from a 24" oak B.T. which was 64.5' to the S.E.

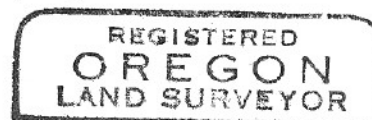
At the S. E. corner of Section 25, we found a 1" axle and a 8" oak B.T. N. 8° W. 7.71' distant. We referenced this corner to other points as shown on our card no. 351.

Beginning at the S.E. corner of Section 25, we ran on a magnetic random course to the E. 1/4 corner of Section 25. Our measured distance on our corrected line was 2641.30 ft. This distance was split for the 1/16 corner which we set in the center of Thompson Road when we turned 90° off of the N. E. corner of the S. E. 1/4 of the S. E. 1/4, our line hit on a fence line. We decided this was close enough for the setting of the Property corner 20' West. The fence line would have to be off considerable with a 2" axle which we found 1/2 mile to the West in order to affect this corner beyond tolerance limits.

Monuments found and set are shown on map no. 4186 which by reference is made part of these notes.

CHECKED & APPROVED:

TENNESON ENGINEERING CORPORATION



Verl R. Fraley

Signed:

Verl R. Fraley, #183
Registered Oregon Land Surveyor