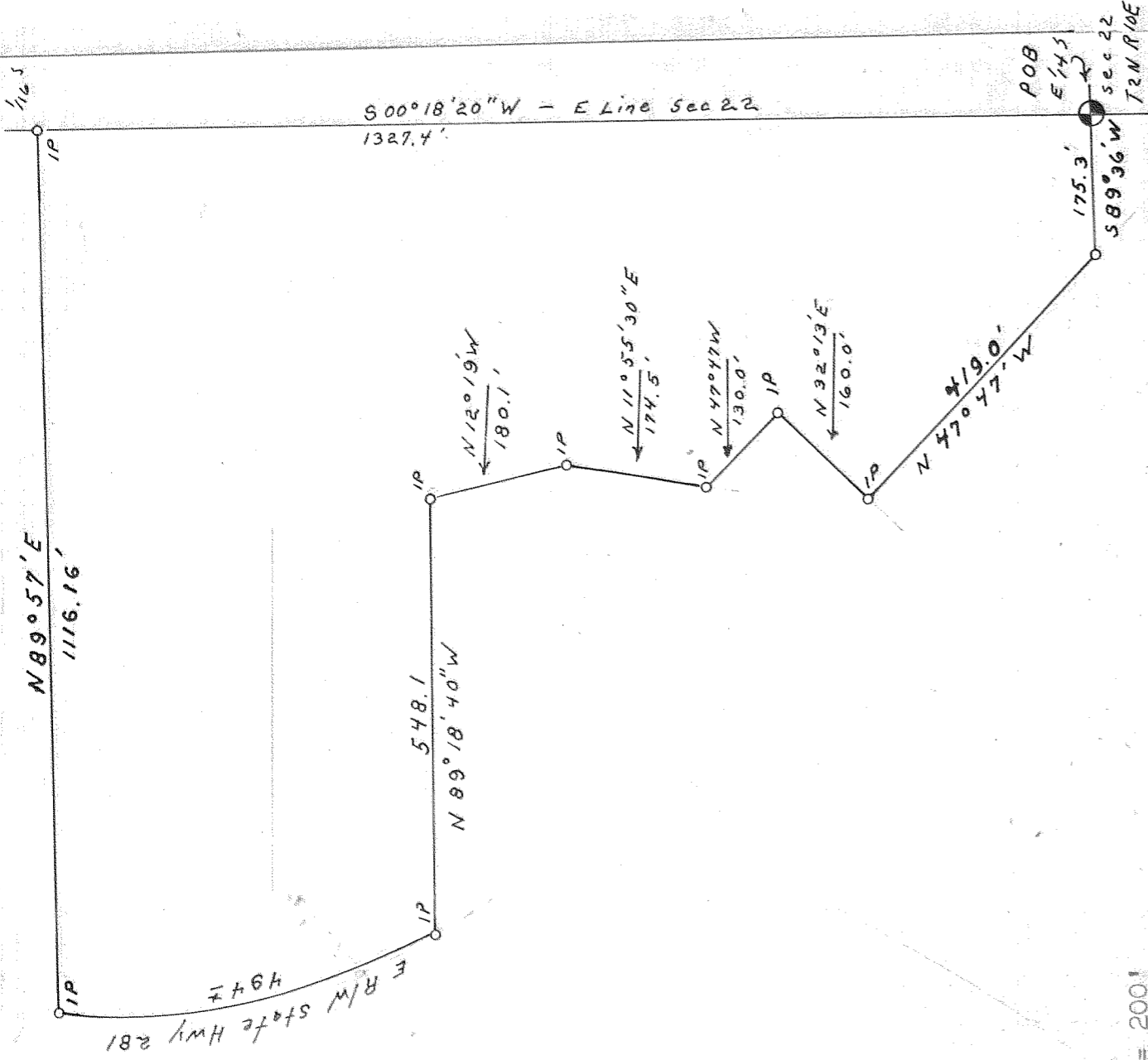


The D. M. and C. A. Jacox Property
 in the SE 1/4 of the NE 1/4
 Section 22, T 2 N, R 10 EMM



Scale: 1" = 200'
 Surveyed: September, 1967

Beginning at the East quarter corner of Section 22, Township 2 North, Range 10 East of the Willamette Meridian, Hood River County, Oregon. Thence S 89° 36' 20" W a distance of 175.30 feet to a point, thence N 47° 47' W a distance of 419 feet to a point, thence N 32° 13' E a distance of 160 feet to a point, thence N 11° 55' 20" E a distance of 174.5 feet to a point, thence N 12° 19' W a distance of 180 feet to a point, thence N 47° 47' W a distance of 130 feet to a point, thence N 32° 13' E a distance of 160 feet to a point, thence N 47° 47' W a distance of 175.3 feet to a point on the East Right of Way line of relocated State Highway 282. Thence Northerly along said right of way a distance of 494 feet, more or less, to the 1/16 line, being the North line of the South half of the Northeast quarter of said Section 22. Thence N 89° 57' E a distance of 1116.16 feet to the East line of said Section 22. Thence S 00° 18' 20" W a distance of 1327.40 feet to the point of beginning, containing 20 acres, more or less. A copy of which is on file in the office of the Hood River County Surveyor.

REGISTERED
OREGON
 LAND SURVEYOR

25

Richard A. King

JAN 1 1968
 Richard A. King
 98

1418 7-350

28-67