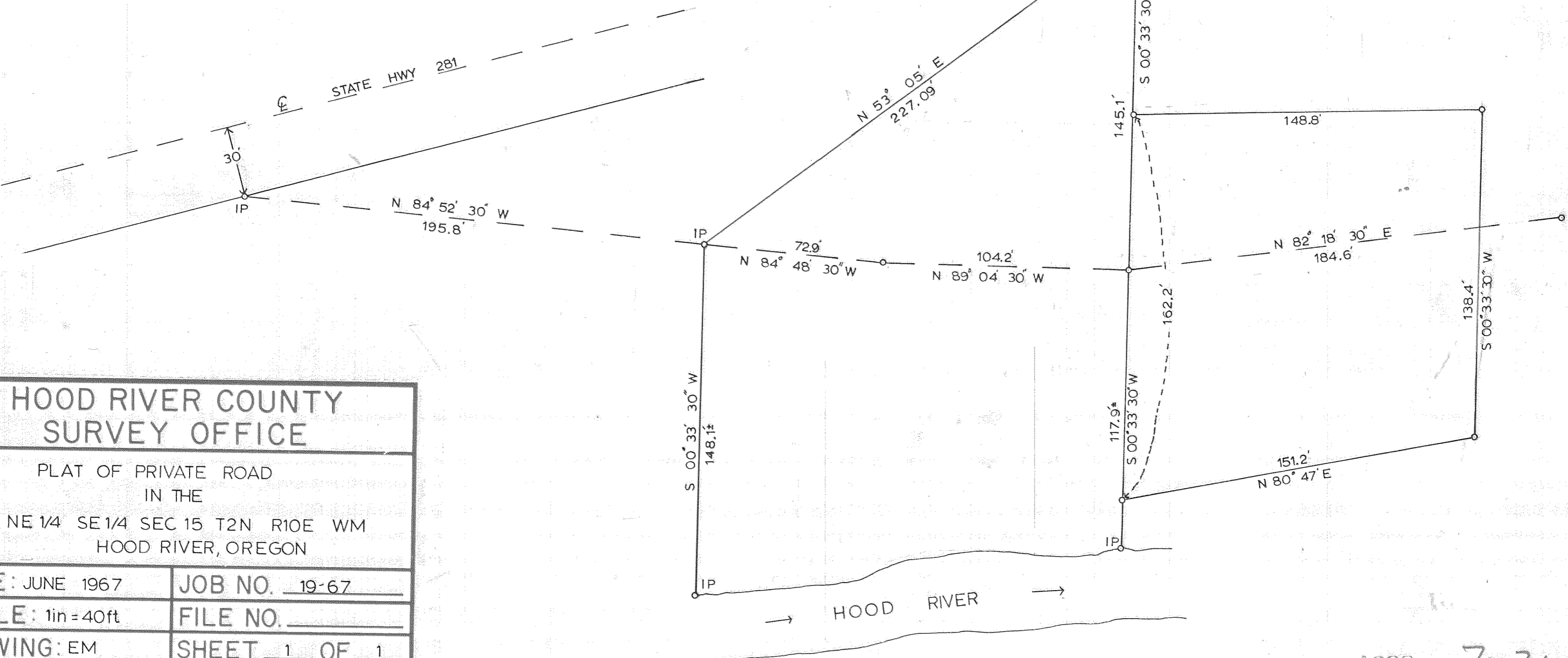


LEGEND

— — — = PRIVATE ROAD



**HOOD RIVER COUNTY  
SURVEY OFFICE**

PLAT OF PRIVATE ROAD  
IN THE  
NE 1/4 SE 1/4 SEC 15 T2N R10E WM  
HOOD RIVER, OREGON

DATE: JUNE 1967	JOB NO. 19-67
SCALE: 1in = 40ft	FILE NO. _____
DRAWING: EM	SHEET 1 OF 1