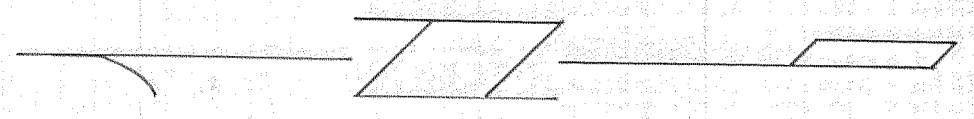
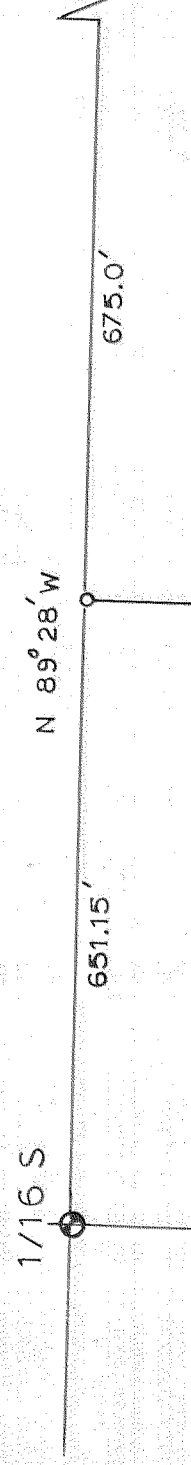
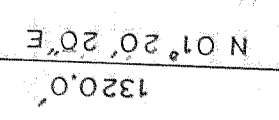


T3N R10E
34.35
312
T2N R10E



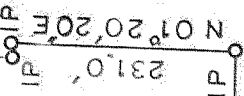
1320.0'
N 01°20'20"E



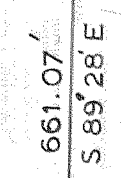
15' N 89°28' W



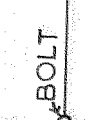
231.0'
N 01°20'20"E



661.07'
S 89°28' E



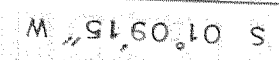
BOLT



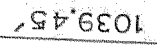
1551.0'



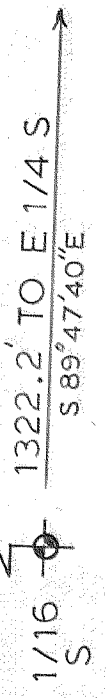
S 01°09'15" W



1039.45'



1/16 S
1322.2' TO E 1/4 S
S 89°47'40"E



HOOD RIVER COUNTY SURVEY OFFICE

PLAT OF THE M & B ASAI PROPERTY
IN
E 1/2 NE 1/4 SEC 3 T2N R10E WM
HOOD RIVER COUNTY OREGON

DATE: SEPT 1966	JOB NO. 15-66
SCALE: 1 in = 200 ft	FILE NO. _____
DRAWING: J M	SHEET 1 OF 1

