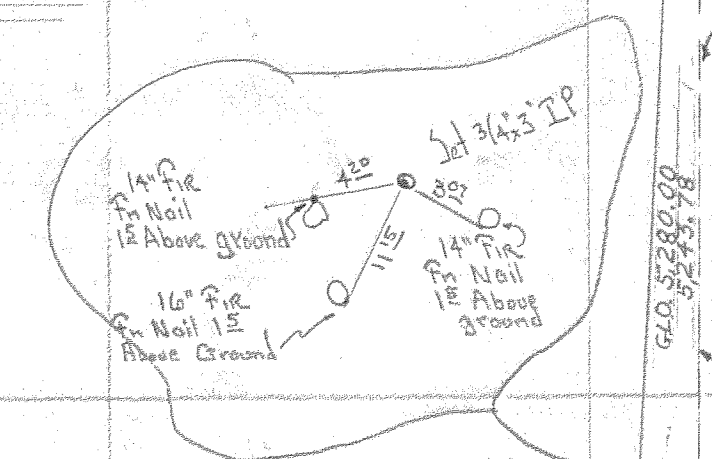


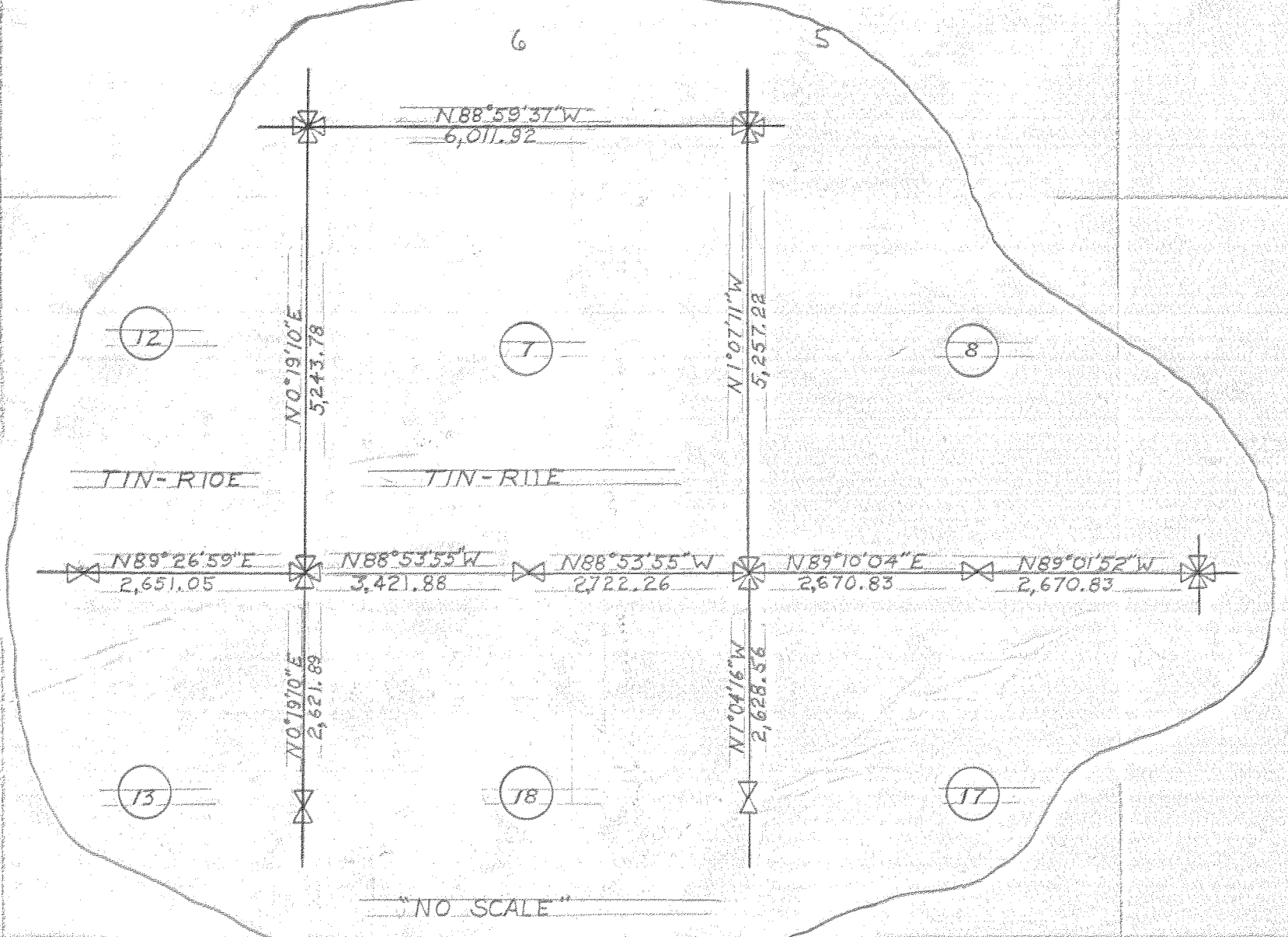
# 1313

SCALE 1"=400'

BEARINGS ASSUMED FROM MAGNETIC COMPASS BEARING. DECLINATION 2'



SEC. 7-IN-11E



SEC. 17-IN-11E

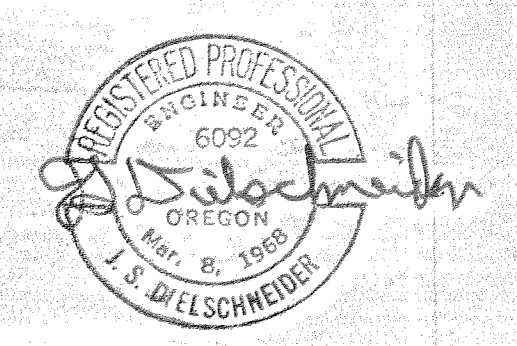
SEC. 13-IN-10E

SEC. 18-IN-11E

A BREAKDOWN OF THE NORTH LINE OF SEC. 18-TIN-R11E

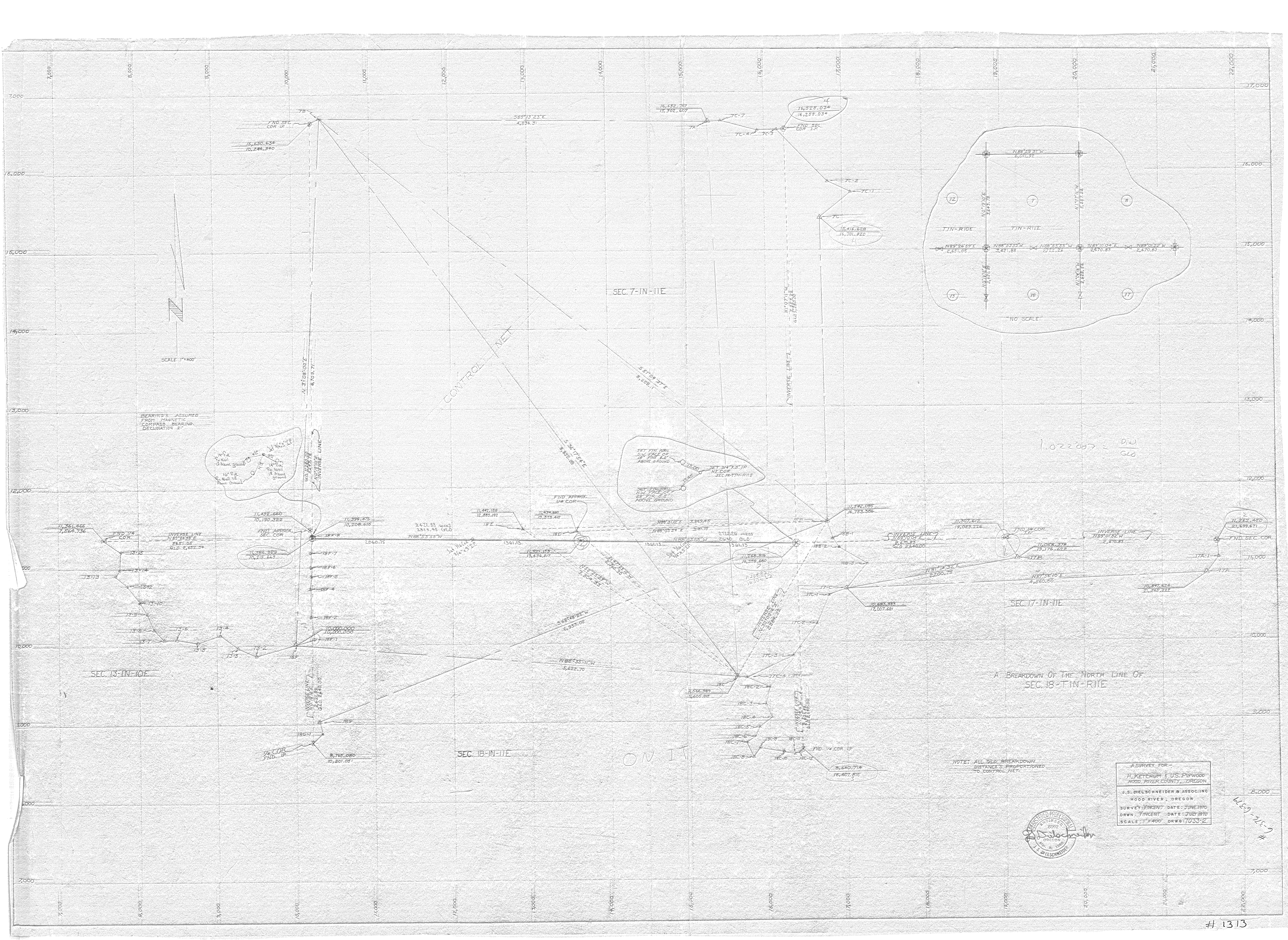
NOTE: ALL G.L.O. BREAKDOWN DISTANCES PROPORTIONED TO CONTROL NET.

A SURVEY FOR - H. KETCHUM & U.S. Plywood HOOD RIVER COUNTY, OREGON J.S. DIELSCHNEIDER & ASSOC. INC HOOD RIVER, OREGON SURVEY: VINCENT DATE: JUNE 1970 DRWN: VINCENT DATE: JULY 1970 SCALE 1"=400' DRWG: 7033-2



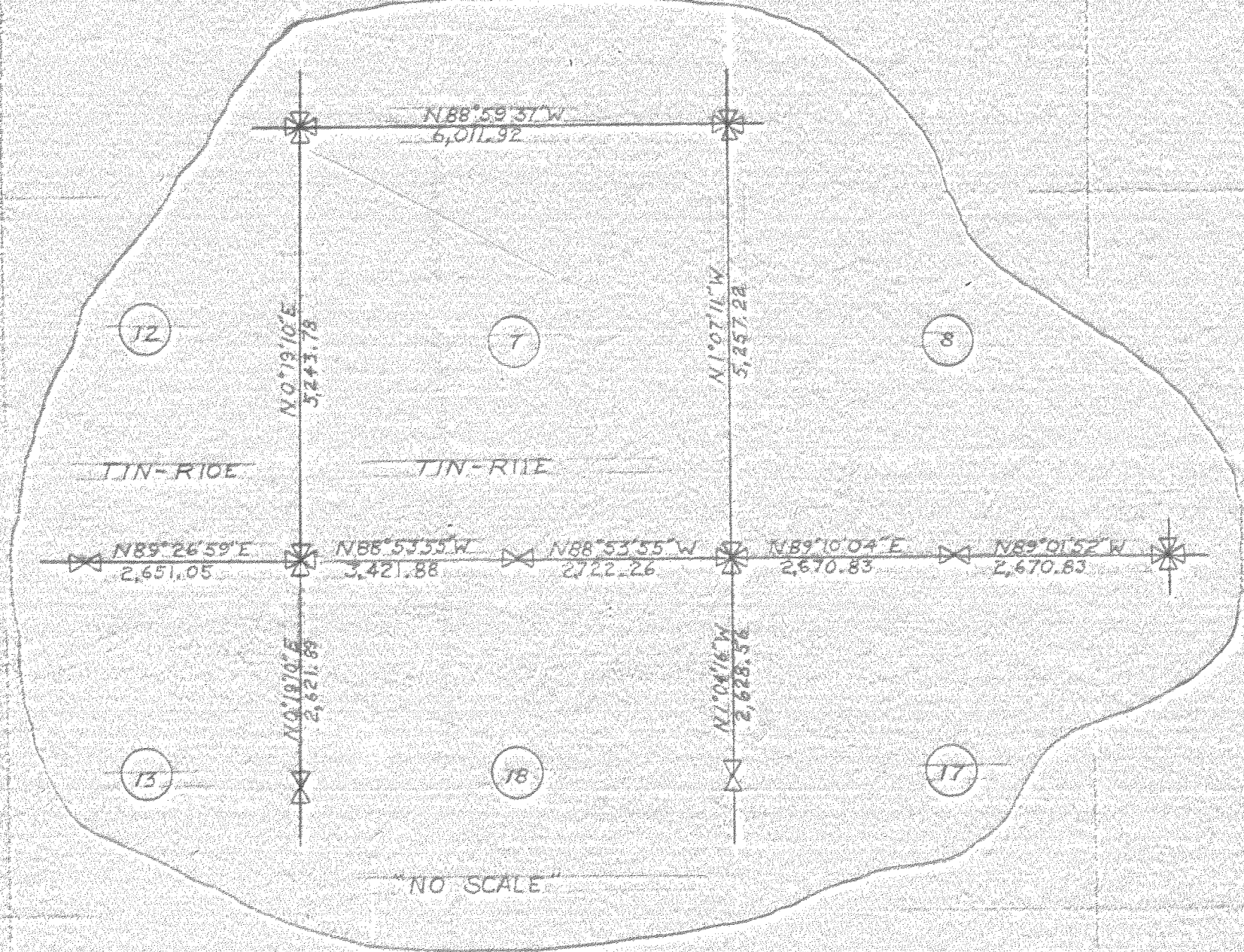
# 1313





BEARINGS ASSUMED FROM MAGNETIC COMPASS BEARING DECLINATION 2'

SCALE 1"=400'

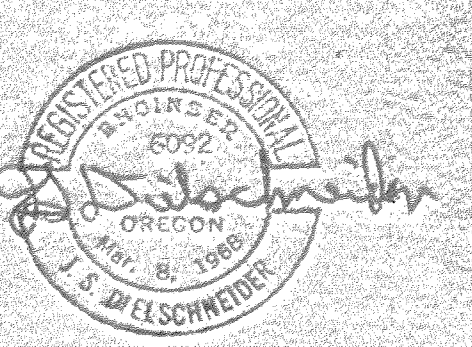


1.022007 = Dist GLO

A BREAKDOWN OF THE NORTH LINE OF SEC. 18-T1N-R1E

NOTE: ALL GLO BREAKDOWN DISTANCES PROPORTIONED TO CONTROL NET.

A SURVEY FOR  
 H. KETCHUM & U.S. PINWOOD  
 HOOD RIVER COUNTY, OREGON  
 J.S. DIELSCHNEIDER & ASSOCIATE  
 HOOD RIVER, OREGON  
 SURVEY: VINCENT DATE: JUNE 1890  
 DRWN: VINCENT DATE: JULY 1890  
 SCALE: 1"=400' DRWG: 7053-2





Engineering  
Surveying  
Data Processing

## Dielschneider Associates Inc

No. 8 Fourth St. Hood River, Oregon 97031

Phones: Hood River 503/386-2912, The Dalles 503/296-3721



March 18, 1971

Carlos Van Elsberg, Director  
Department of Public Works  
Hood River County  
P. O. Box 457  
Hood River, Oregon 97031

Subject: U. S. Plywood - Harry Ketchum  
Project No. 7033

Field Notes: U. S. Plywood - Harry Ketchum  
Project No. 7033

Survey North Section line, Section 18, Township 1 North, Range  
11 East of the Willamette Meridian.

Crew: Ed Vincent, Party Chief  
Elmer Wilson, Chainman  
Hood River County Tellerometer Crew

Dates performed: June - July 1970

Weather: Hot

In June of 1970, our firm was retained by Harry Ketchum and Steve Nance of U. S. Plywood to establish the North Section line of section 18, Township 1 North, Range 11 East of the Willamette Meridian. The Northwest Section corner, North Quarter corner and the Northeast Section corner of said Section 18 have been lost. The re-establishment of these corners was done by the following method: The West Quarter of Section 18 and the Northwest Section corner of Section 7 were recovered. The Northwest Section corner of Section 18 was established by single proportion between these corners. This position was tied into the recovered North Quarter corner of Section 13, Township 1 North, Range 10 East of the Willamette Meridian. Distance checked G.L.O. within 1.5' South position of the Northwest Section corner was held as calculated. The Northeast Section corner was double proportioned between the East Quarter corner of Section

Carlos Van Elsberg, Director  
Hood River County Dept. of Public Works  
March 18, 1971

18 and the Northeast Section corner of Section 7, Township 1 North Range 11 East of the Willamette Meridian, and from the Northwest Section corner and North Quarter corner of Section 17, Township 1 North, Range 11 East Willamette Meridian. The North Section line of said Section 18 was then run in the Field and the one/sixteenth corners set. Corners found and set are so noted on the survey map, together with G.L.O. distance per Government notes.

I certify that this work was done under my direct supervision.

James S. Dielschneider, E.

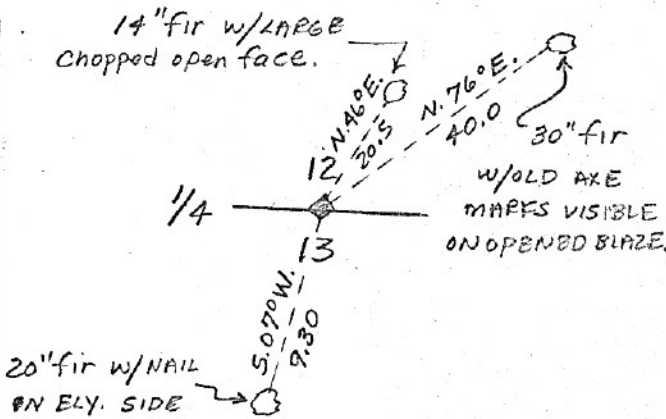




AUG 11 1971

SECTION OR SUBDIVISION

TWP. 1 N., RANGE 10 E., W.M.



14" fir w/LARGE  
chopped open face.

20" fir w/NAIL  
ON ELY. SIDE

W.O. REF. 7033

CORNER No. \_\_\_\_\_ COUNTY SURVEYOR

By \_\_\_\_\_ DEPUTY  
CORNER DESCRIPTION

AT CORNER - FOUND  
STONE 12"X12"X12" WITH  
1/4 CHISELED ON NORTH  
FACE, IN MOUND OF STONE.

NO EVIDENCE OF ORIG.  
DAK B.T.

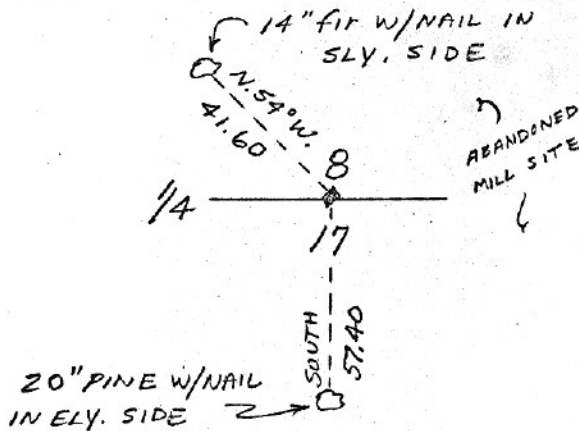
SET SQUARED FIR POST  
AT CORNER.

TIMBERED AREA - SLOPES N.

CARD ..... OF .....

SECTION OR SUBDIVISION

TWP. 1 N., RANGE 11 E., W.M.



14" fir w/NAIL IN  
SLY. SIDE

20" PINE w/NAIL  
IN ELY. SIDE

W.O. REF. 7033

CORNER No. \_\_\_\_\_

CORNER DESCRIPTION

AT CORNER - FOUND  
OLD MOUND OF STONE.

SET 1" GALVANIZED  
PIPE ALONGSIDE.

COR. FALLS AT WLY.  
EDGE OF CLEARING.

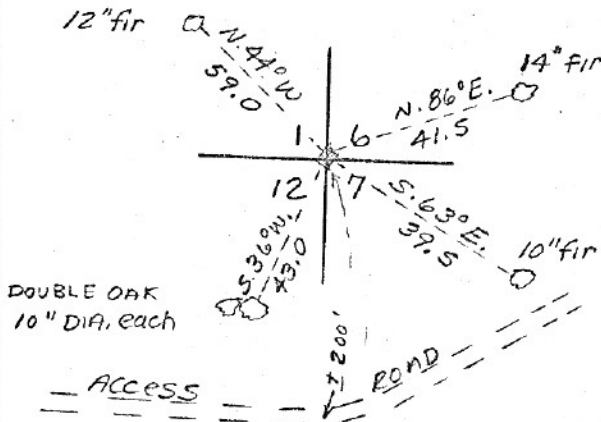
BLAZED LINE RUNS  
E-W FROM CORNER.

CARD ..... OF .....



SECTION OR SUBDIVISION

TWP. 1 N., RANGE 10 E. 11 E., W.M.



DOUBLE OAK  
10" DIA. each

W.O. REF.

7033

CORNER No. ....

CORNER DESCRIPTION

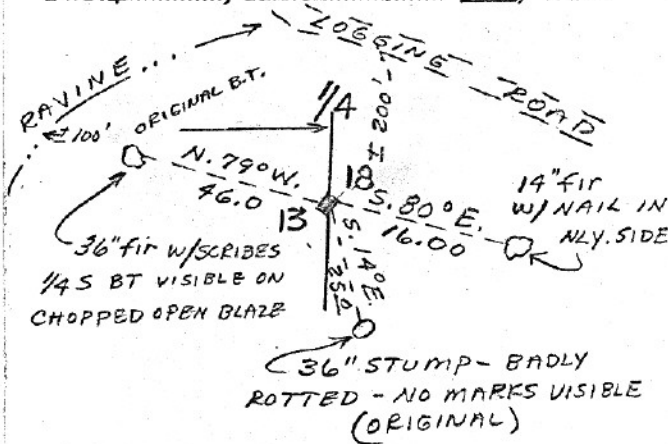
AT CORNER - STEEL AXLE  
2" DIAM., 12" ABOVE GROUND  
FIRMLY SET.

ALL BEARING TREES  
(5 YEARS)  
OF RECENT ORIGIN WITH  
SCRIBE MARKS VISIBLE ON  
PARTIALLY HEALED BLAZES.  
COR. LOCATED ON NORTH  
EDGE OF LOGGED AREA

CARD ..... OF .....

SECTION OR SUBDIVISION

TWP. 1 N., RANGE 10 E. 11 E., W.M.



W.O. REF.

7033

CORNER No. ....

CORNER DESCRIPTION

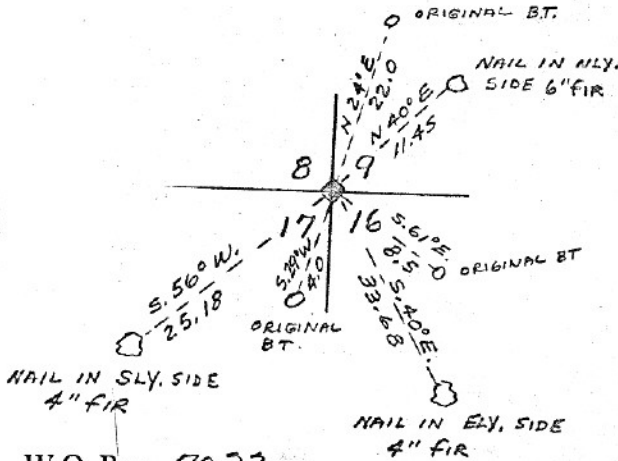
AT CORNER - FOUND  
STONE 10x8x6 WITH  
1/4 CHISELED ON E FACE.  
A GALVANIZED PIPE  
1" DIAM. FIRMLY SET  
ALONG SIDE.

CARD ..... OF .....



SECTION OR SUBDIVISION 89  
1716

TWP. 1 N., RANGE 11..... E, W.M.



W.O. REF. 7033

CORNER No. ....

CORNER DESCRIPTION

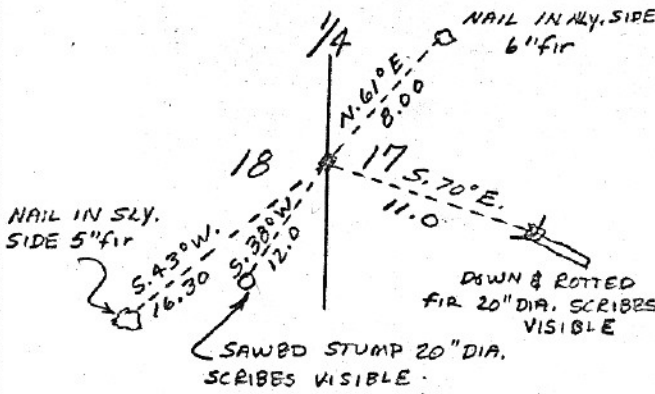
AT CORNER - STEEL  
FENCE POST & SQUARED FIR POST.  
ORIG. B.T.'S  
NE - BROKEN SNAG 12" DIA. W/HEALED  
14" BLAZE  
SE - SAWED STUMP W/SCRIBES VISIBLE  
12"  
SW - SAWED STUMP W/SCRIBES VISIBLE

COR. FALLS AT NORTH  
EDGE OF LOGGED AREA

CARD..... OF .....

SECTION OR SUBDIVISION

TWP. 1 N., RANGE 11..... E, W.M.



W.O. REF. 7033

CORNER No. ....

CORNER DESCRIPTION

AT CORNER -  
SET 1" DIA.  
GALVANIZED PIPE.  
COR. FALLS IN  
DENSE FIR REPRODUCTION.  
A LOGGING ACCESS  
ROAD IS S. 40° W.  
APPROX 100' FROM COR.  
AND BRS. WEST AND S.E.

CARD..... OF .....



SECTION OR SUBDIVISION

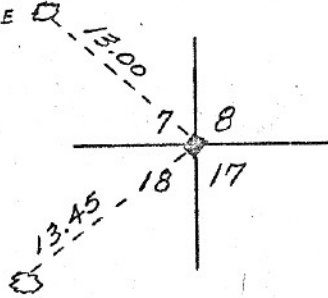
CORNER No. ....

TWP. 1 N., RANGE 11 E., W.M.

CORNER DESCRIPTION

NAIL IN SW.  
SIDE 18" PINE

AT CORNER - SET 3/4"  
x 3' PIPE.



THIS COR. RE-ESTAB.  
BY PROPORTIONATE METHODS.

NAIL IN N.W. SIDE  
28" FIR.

W.O. REF. 7033

CARD ..... OF .....

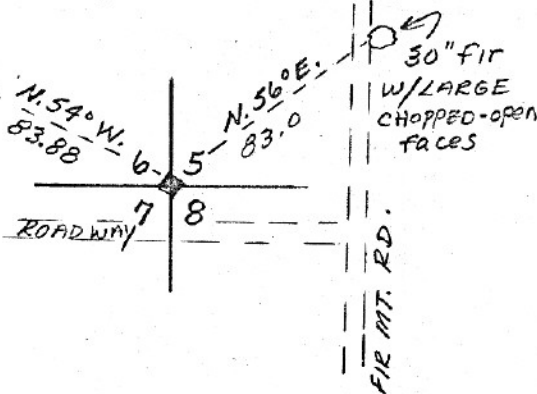
SECTION OR SUBDIVISION

CORNER No. ....

TWP. 1 N., RANGE 11 E., W.M.

CORNER DESCRIPTION

14" PINE W/ NAIL  
IN NLY. SIDE



AT CORNER FOUND STONE  
8" x 8" x 10" IN MOUND OF  
STONE W X CHISELED ON  
TOP. A PIPE 1" DIAM. IS  
FIRMLY SET ALONGSIDE.  
COR. FALLS IN CLEARING  
NO EVIDENCE OF ORIGINAL  
B.T.'S.

W.O. REF. 7033

CARD ..... OF .....