

Oct. 25, 1968

44519

HOOD RIVER CO. SCHOOL

DAKORNE, ORE

Tract survey

Tuttle &

Jones &  
Munich

REGISTERED  
OREGON  
LAND SURVEYOR

David L. Tuttle

JULY 12, 1959  
DAVID L. TUTTLE  
872

FILED

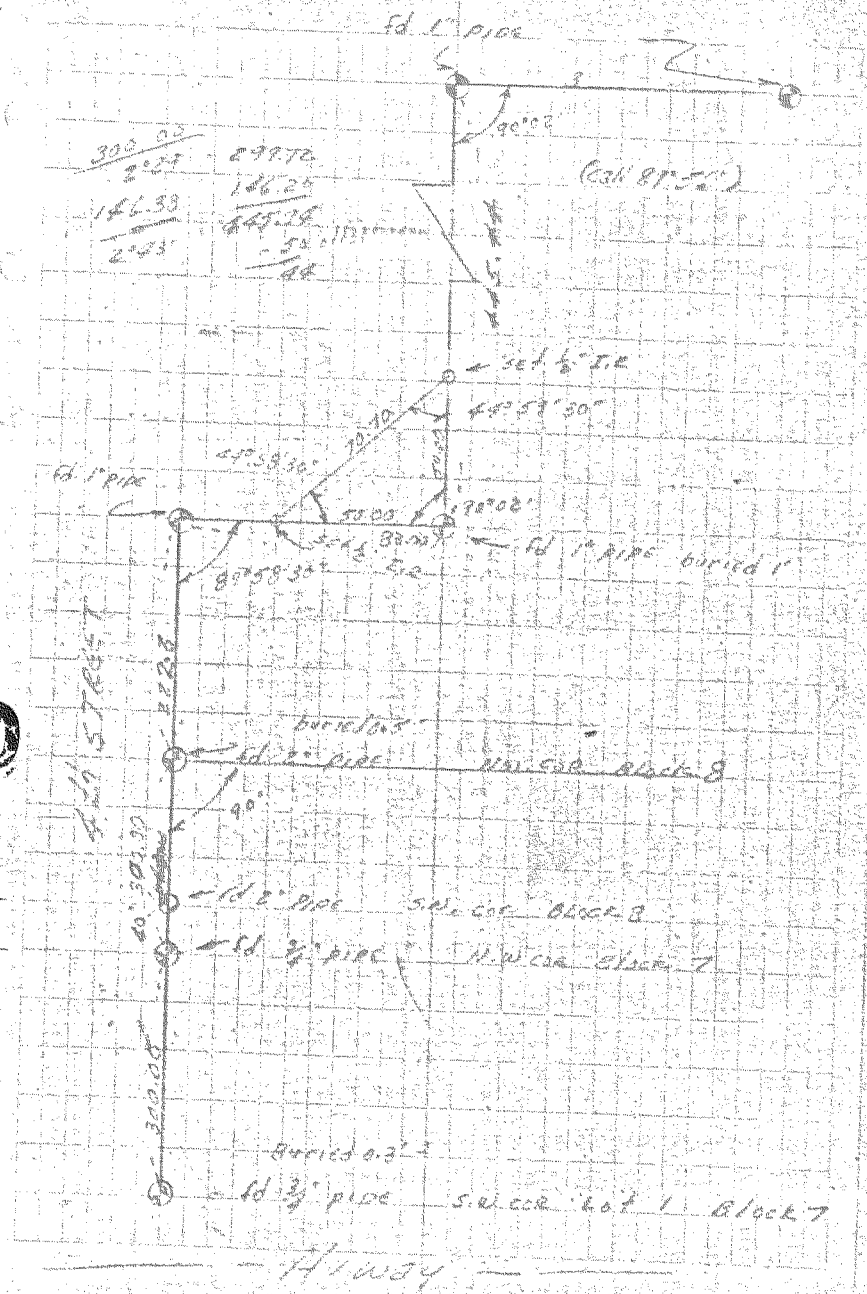
APR 29 1969

By COUNTY SURVEYOR

I CERTIFY THIS WORK WAS  
DONE UNDER MY  
SUPERVISION

CHECKED  
Pres  
Tennison Eng. Co.

REGISTERED PROFESSIONAL  
4112  
OREGON  
MAY 10, 1957  
DONALD J. BRANTON



300.00	299.70
2.27	156.25
146.53	645.25
2.43	52.17
	42

(Calc 87.50')

4th STREET

Highway

6-310 1300

1  
VN-10-32

Field Notes:

Map 1000 State Survey Section 36 T10N E3

Block 210

Survey of a tract of land in the southeast quarter of the southeast quarter of Section 36, T10N, E3, Polk County, Oregon.

Area:

Tulla party chief

John Tuller

John Tuller

Date completed Oct 29, 1963

On Oct 21, 1963 our firm was contacted by Hood River School Dist. who requested a survey of a tract of land in Parkdale, Ore.

The survey was begun on Oct 25, 1963. First we obtained a copy of Resolution No. 63 passed by the Board of Directors of School District No. 3, Hood River County, Oregon, describing the tract of land. Also a copy of the survey of the existing High School Lot, and a map of surveys made in Parkdale, Ore.

by MARTIN PEPPER, Registered Professional Engineer # 3388. With the aid of these maps, we recovered the "North west"

and the south west corners of Block 210, the North west and the South west corners of Block 3, all on the R20 addition to Section 36.

We found the corners to be monumented with iron pipe in good condition, and in line with each other. Measurements through the two blocks we found the distances to conform with the recorded Plat distances. Using these corners, a line was projected Northwesterly. At 222.3 feet Northwesterly of the North West corner of Block 2, a 1" iron pipe was found. At 23 feet Easterly of this point another pipe was found, and at 45.4 feet Northwesterly of this point another pipe was uncorroded. The pipes appeared in good condition and be representing the High School Lot corners. Using these points as reference we surveyed out a triangular tract as described in Resolution No. 63. The established corners where monumented by 1/2" iron rods.

Property corners found and established in the course of this survey, together with measured bearings and distances are shown on the attached map, which by reference are made a part thereof.