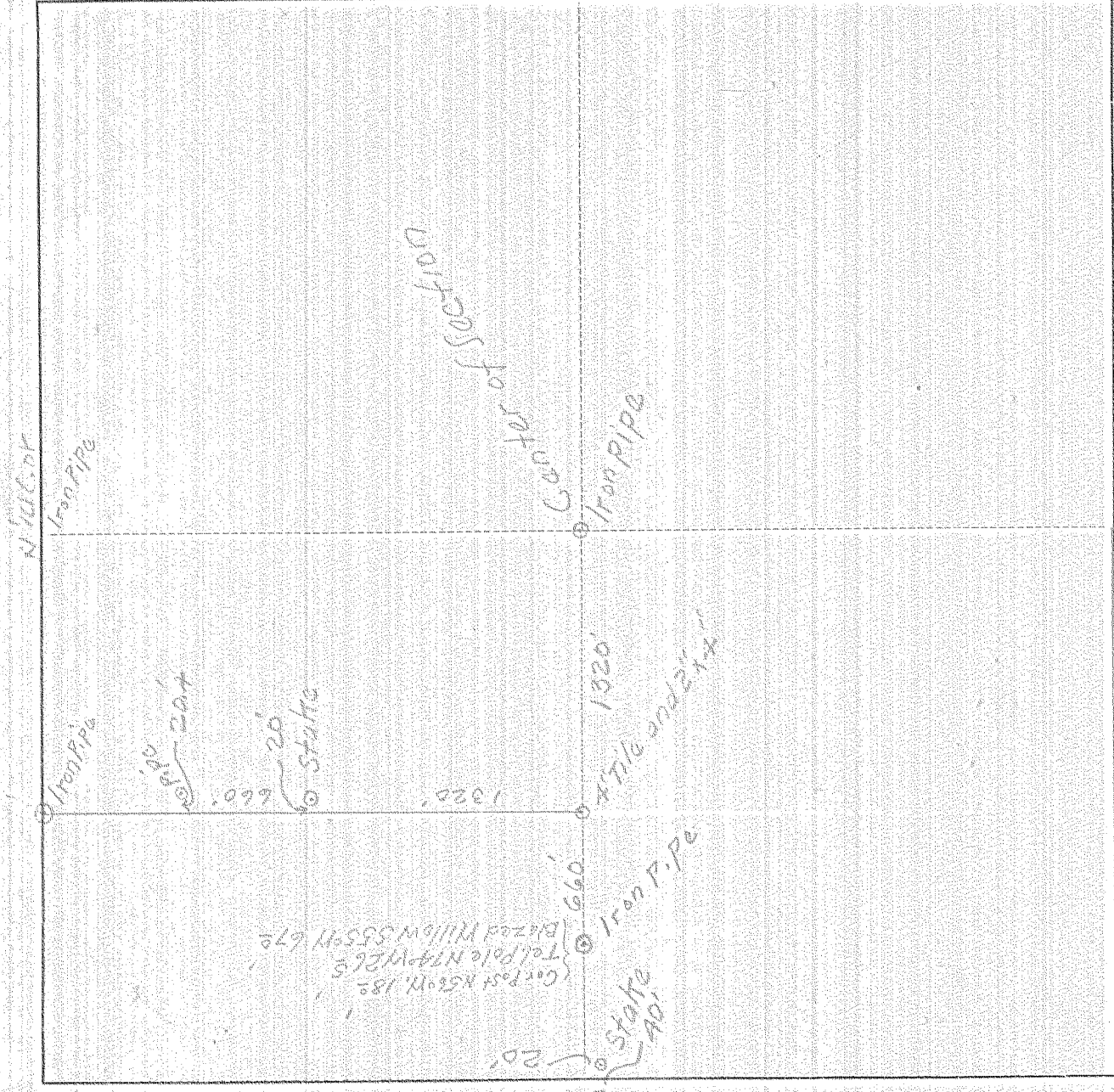


SURVEY IN \_\_\_\_\_, SECT. 13, TWP. 11N, RANGE 9, EAST W. M.

FOR \_\_\_\_\_

DATE

NO. 241430



I do hereby certify that this sketch was made from notes taken during an actual survey made by me on \_\_\_\_\_ 192\_\_\_\_, and that it correctly represents field work of said survey.

County Surveyor  
Hood River County, Oregon

Helps E.H. & Sterling Cash

1274

6-127