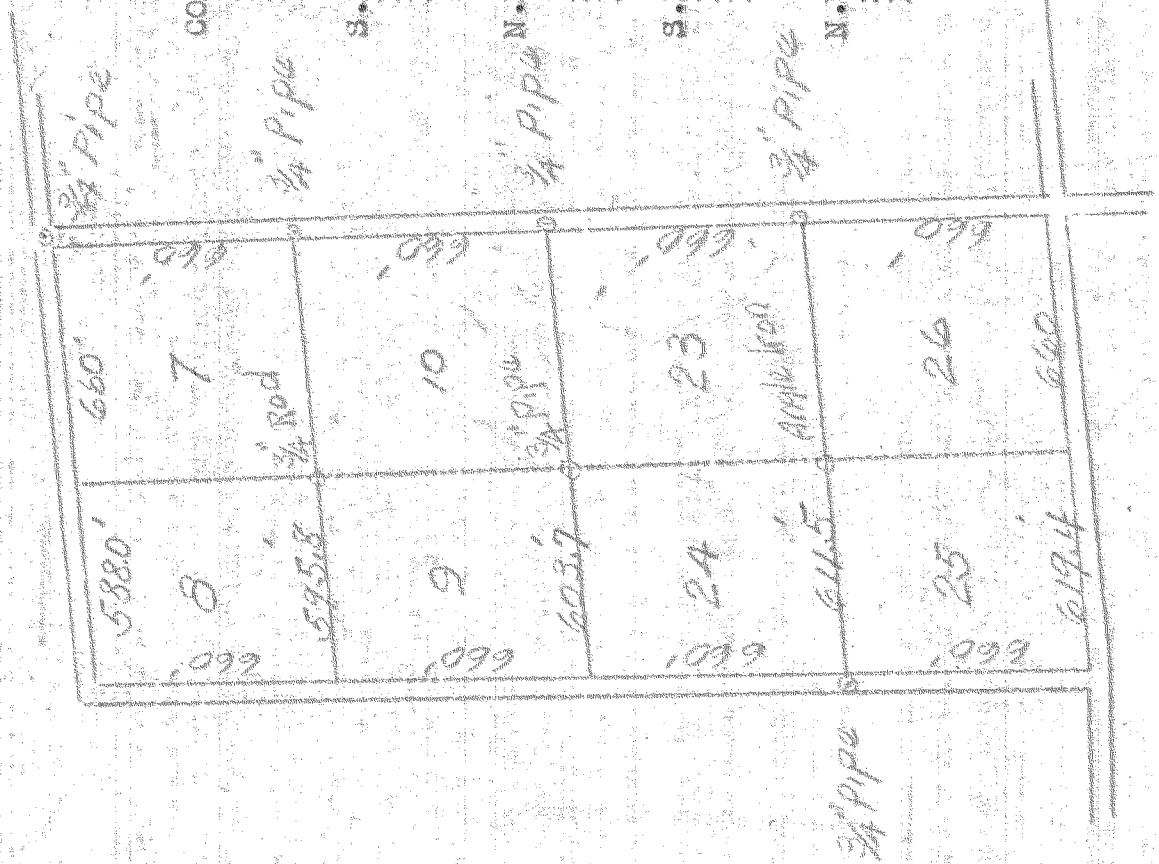


First Addition to Riverside Park

Scale: 1 in. = 500 ft.



CORNER REFERENCES - N.E. Cor. Lot 7  
 Nail in power Pole 22.0 Feet S.W.  
 Nail in Cascare 33.0 N.W.  
 Nail in Tel. Pole 30.5 N. E.

S.E. Cor. Lot 23  
 Nail in pole 21.5 ft. N. W.  
 Nail in pole 24.0 S.E.  
 On line of row of trees to West

N.E. Cor. Lot 10  
 Cor. of Garage 23.3 ft. West  
 nail in pole 45.2 ft. N. E.  
 Nail in pole 51.8 ft. N.W.

S.E. Cor. Lot 10  
 Nail in pole 20.6 ft. S.E.  
 Nail in pole 51.9 ft. S.W.

N.W. Cor Lot 10  
 nail in 12" fir 5.9 ft. N.W.  
 Nail in 8" fir 4.8 ft. North

Survey made for Jack Baker on April 10, 11, 1951

Lots in First Addition to Riverside Park, in  
 Section 13, T. 1 N., R. 9 E. W. M.