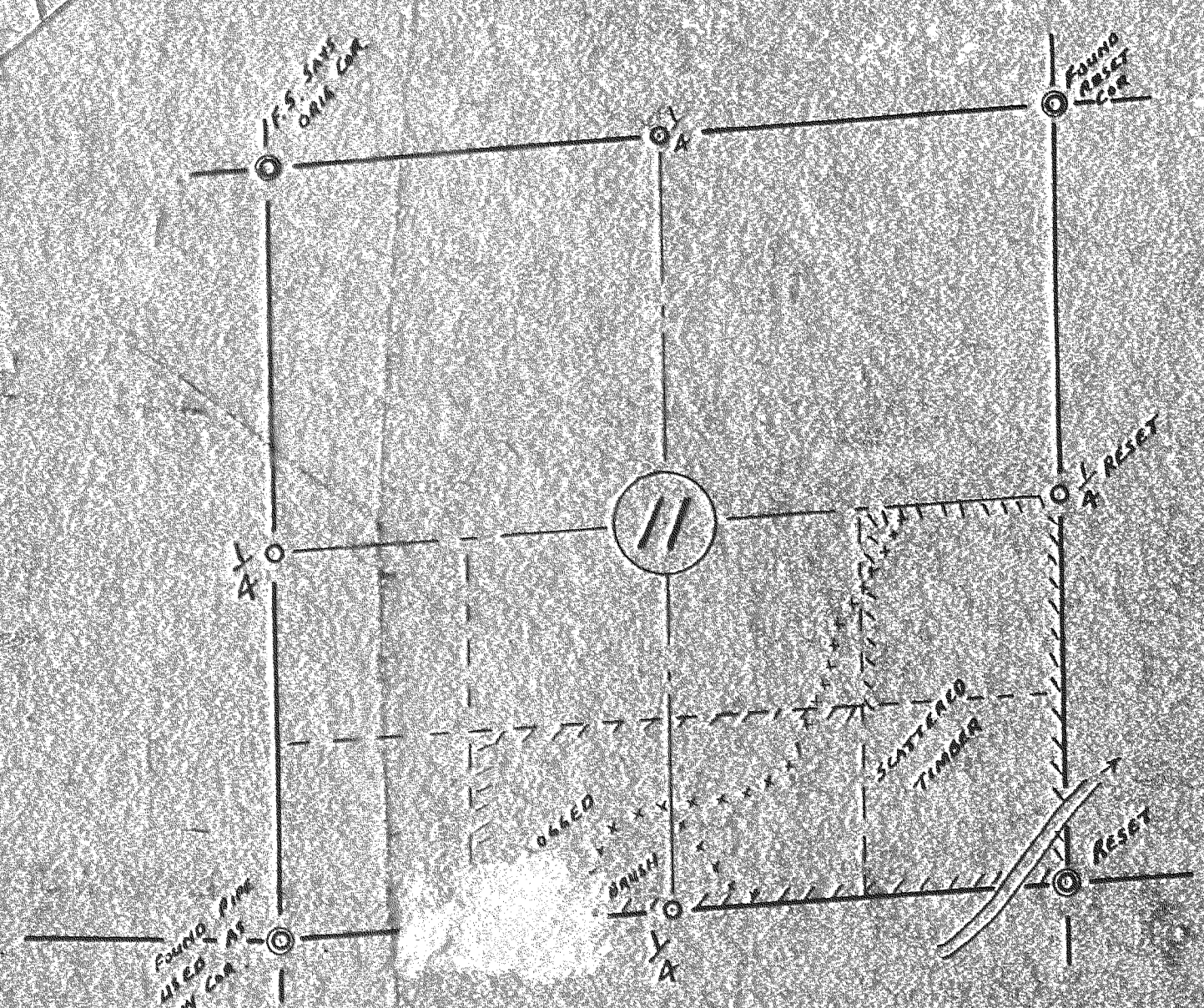


#1



SEC. 11, TIN, RSE

**FILED**  
 DEC 11 1893  
*Charles W. Johnson*  
 COUNTY CLERK

JAYMAR LUMBER CO

SECS 7, 8, 9, 11, 17 & 18, T1N, R9E, W.M.

SCALE 1" = 1000 FT  
 STAFF COMPASS & CHAIN  
 MADE DEC. 21 '30  
 JUNE 1954

MADE BY MODEL  
 1893  
 JAYMAR LUMBER CO  
 CHIEF OF PARTY