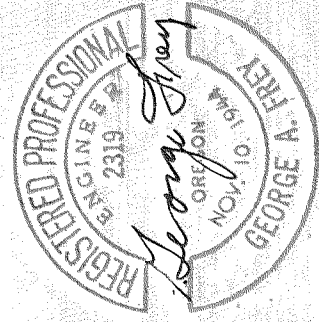
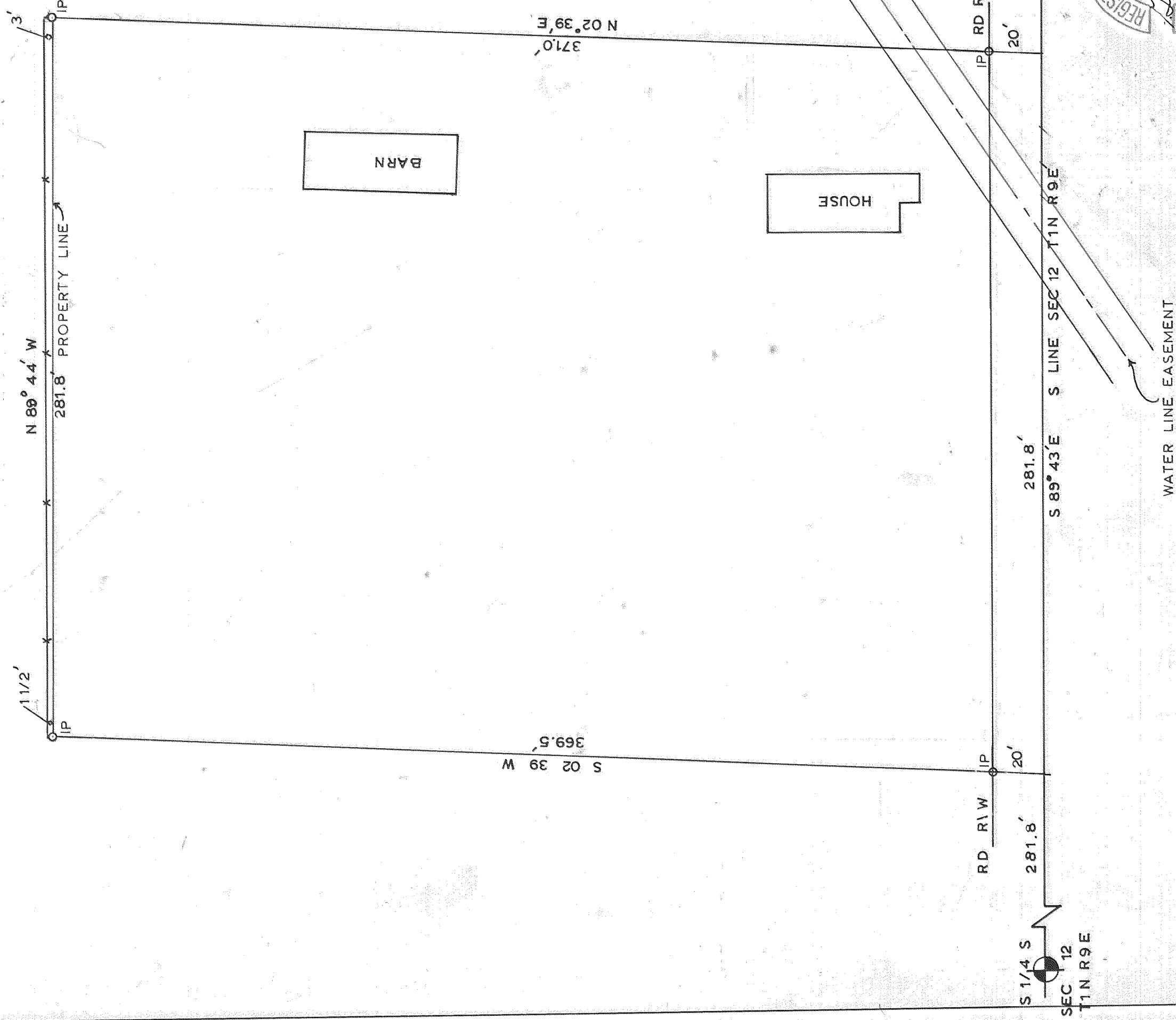


1N-9-12-E

PLAT OF E 1/2 LOT 61-EXCEPT N 272 ft  
RIVERSIDE PARK ADDITION  
SEC 12 T1N R9E WM  
HOOD RIVER COUNTY OREGON  
SURVEY NOV 1965  
SCALE 1 in = 40 ft



36-65

1247 6-088