

PROPERTY LOCATION PLAT

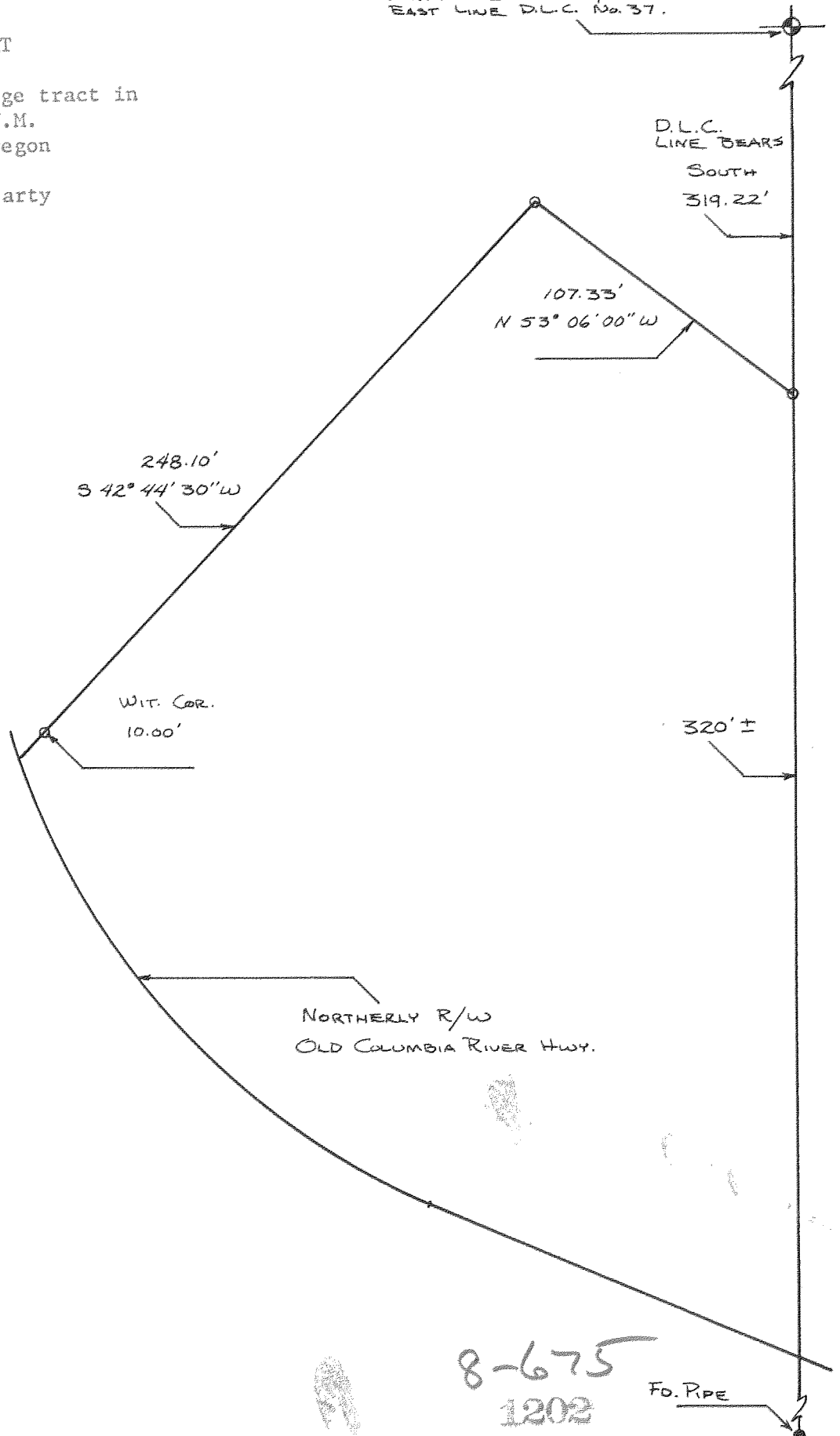
showing the Bill George tract in
Sec. 31, T3N., R11E.W.M.
Hood River County, Oregon

Ed Graham, Chief of Party
Jan. 28, 1973

Scale: 1"=50'

○ — Set Iron Pin

MON. AT INTERSECTION OF
NORTH LINE SEC. 31, T3N 11E AND
EAST LINE D.L.C. No. 37.



8-675
1202

Resume of Survey for Jack Bryant Re: Bill George Property

Located in the NW 1/4 of Section 31, T3N R11E.W.M.

Hood River County, Oregon January 28, 1973

The purpose of this survey was to cut out the tract of land on which the George home is located. In order to accomplish this the East line of D.L.C. #37 was located by on-line observation between found monuments on each end of said line. A point was set on line between these monuments and measured in from the U.S. Engineers monument at the point of intersection of the North line of Section 31 and the East line of D.L.C. #37. The North and West boundary lines of the George tract were then located from this point by traverse. The South line is controlled by the North Right of Way line of the Old Columbia River Highway by deed record of the original tract.

Ed Graham, Chief of Party



Bill George Description

A parcel of land located in the NW 1/4 of Section 31, T3N., R11E.W.M. bounded on the East by the East line of D.L.C. No. 37, on the South by the Northerly Right of Way line of the Old Columbia River Highway, and on the North and West by the following described line;

Beginning at an Iron Pin on the East line of D.L.C. No. 37, 319.22 ft. South of the U.S.E. Mon. at the intersection of said East line with the North line of said Sec. 31, thence N 53° 06' W 107.33 ft. to an Iron Pin, thence S 42° 44' 30" W 238.10 ft. to an Iron Pin as a witness corner on line, thence continuing on line 10 ft. more or less to the Northerly Right of Way line of the Old Columbia River Highway. The above tract contains 1.5 acres more or less.