

GENERAL NOTE

WATER BY
ICE FOUNTAIN WATER DIST.
SEWAGE TREATMENT
INDIVIDUAL SEPTIC TANK &
DRAIN FIELD

ZONING
HOOD RIVER COUNTY

SURFACE DRAINAGE
DRAIN TO EXISTING &
PROPOSED DITCHES

OWNED & SUBDIVIDER
Wm. & F.E. FOXLEY - BK.69 PG.620

LOCATION
SE 1/4, SW 1/4 SEC. 35 T3N R10E WM.
HOOD RIVER COUNTY, OREGON

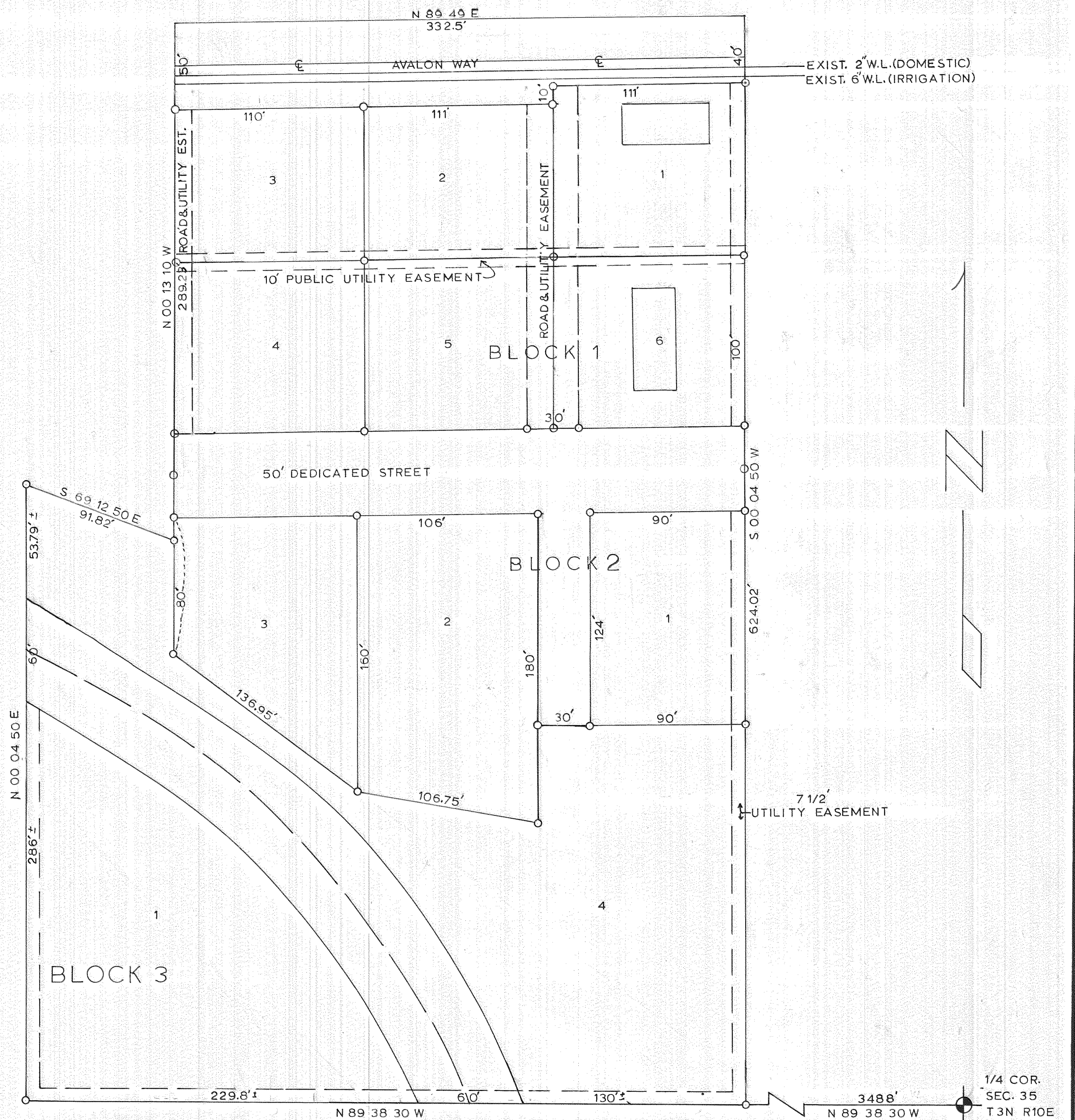
DISTANCES SHOWN ARE SCALE
SCALE: 1 in. = 50 ft.

THE PRELIMINARY PROPOSED PLAT OF
FOXLEY SUBDIVISION WAS EXAMINED
AND APPROVED THIS ____ DAY OF ____ 1966

CHAIRMAN
HOOD RIVER CO. PLANNING COMMISSION

THE PRELIMINARY PROPOSED PLAT OF
FOXLEY SUBDIVISION WAS EXAMINED
AND APPROVED THIS ____ DAY OF ____ 1966

CHAIRMAN
CITY OF HOOD RIVER PLANNING COMMISSION



PRELIMINARY PLAT
PROPOSED
FOXLEY SUBDIVISION
SEC. 35 T3N R10E WM
HOOD RIVER COUNTY OREGON

NOTE:
SEE PLAT
BOOK FOR
FINAL.