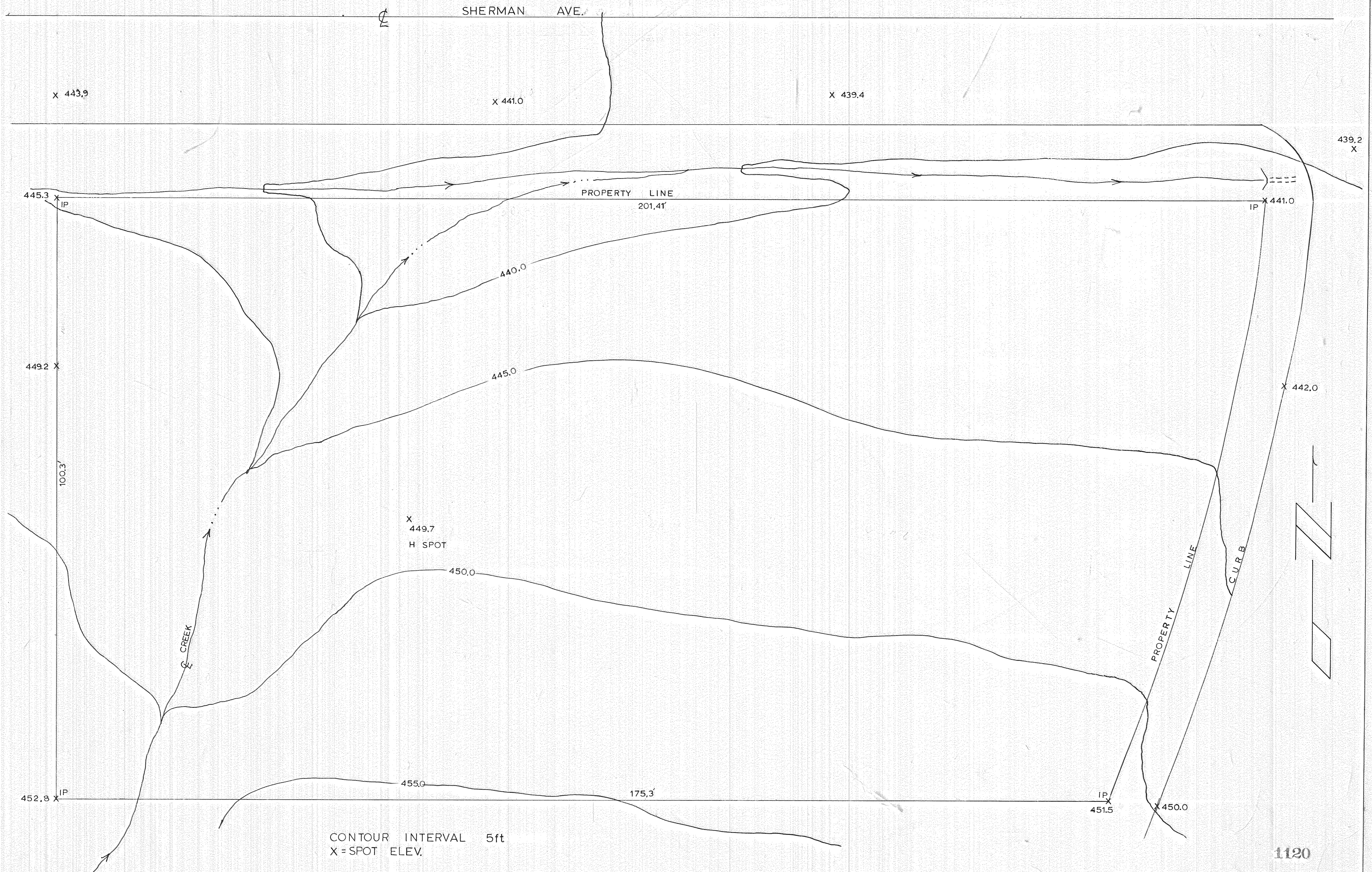


TOPOG OF THE N 100.3ft BLOCK 1 - PUDDY-PARK ADDITION
CITY OF HOOD RIVER, OREGON
NE 1/4 NW 1/4 SEC 35 T3N R10E WM
SCALE 1in = 10' ft
MARCH 1967



CONTOUR INTERVAL 5ft
X = SPOT ELEV.