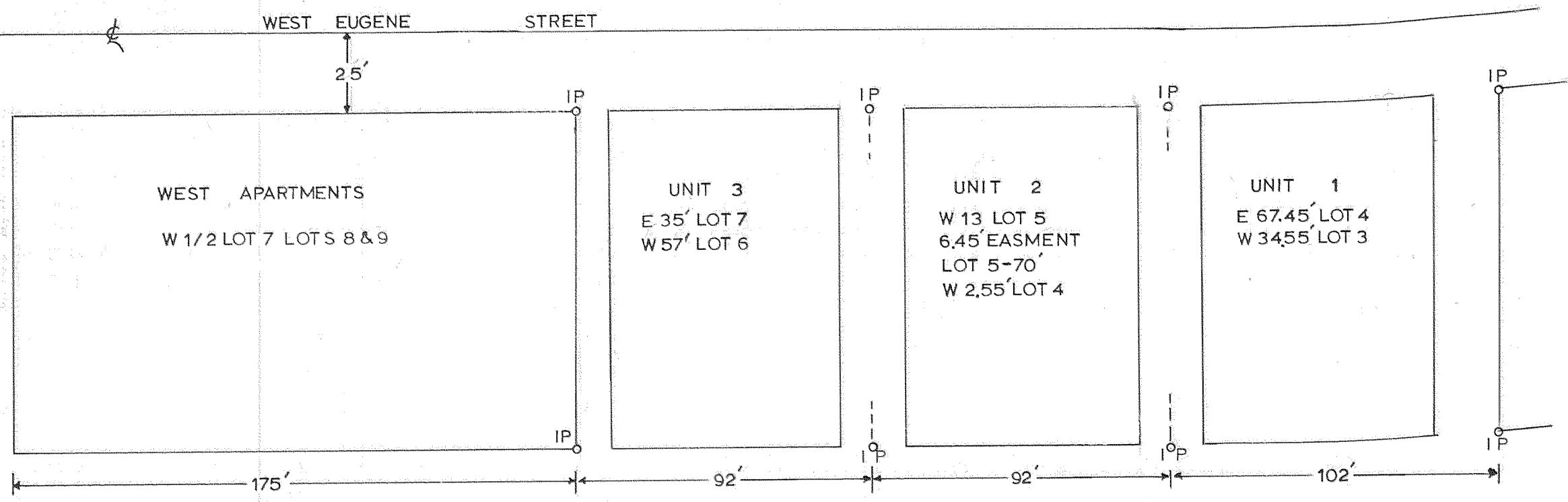


PLAT OF LOT RELOCATION  
IN  
BLOCK 3 PUDDY PARK ADDITION  
TO THE CITY OF HOOD RIVER  
HOOD RIVER COUNTY OREGON  
SURVEY APRIL 1965  
SCALE: 1in = 40 ft



NOTE

EACH UNIT 72 x 105 + 10 DRIVE WAY  
1" IRON PIPE SET AT CORNERS OF EACH UNIT



12-65