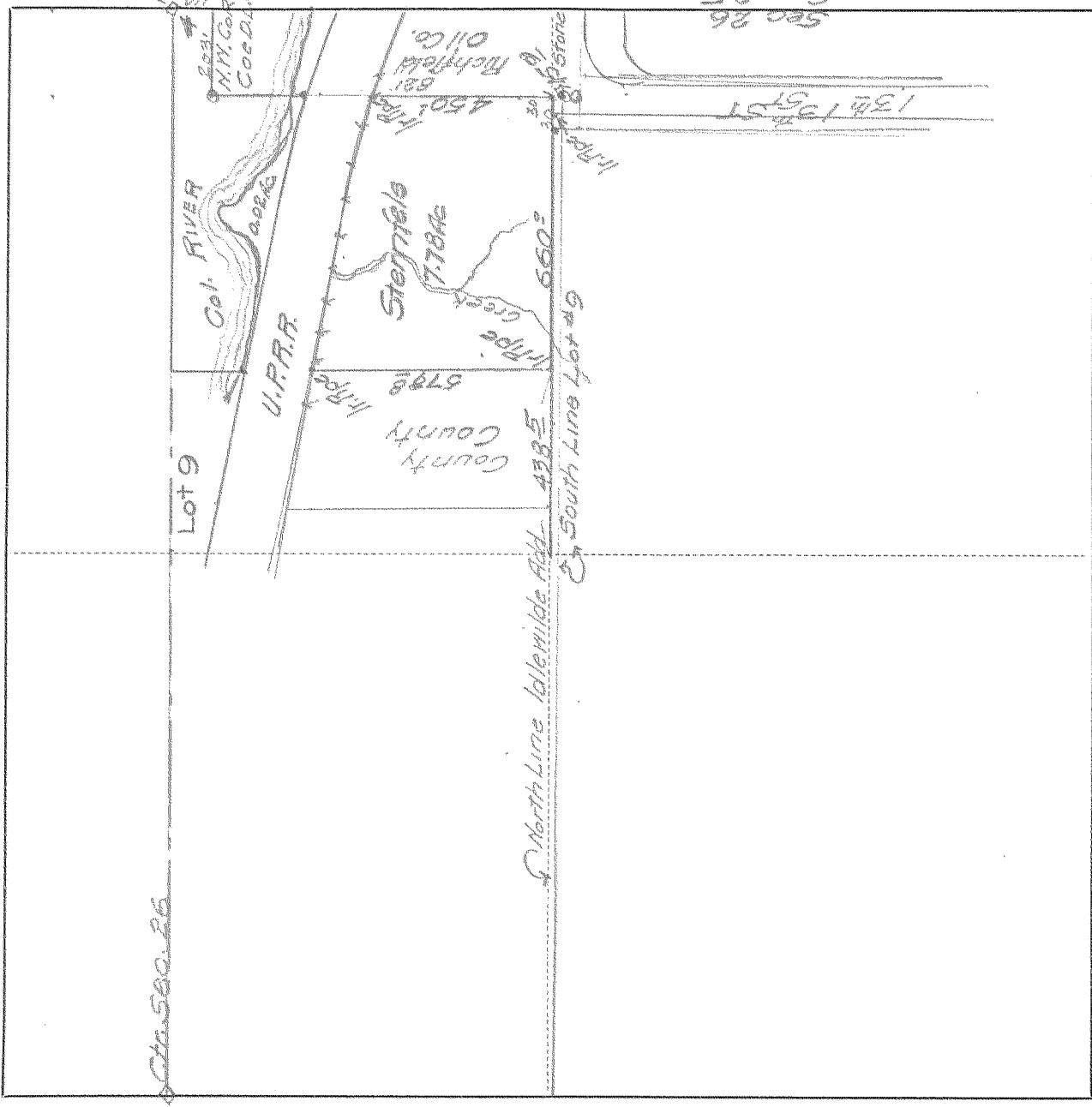


SURVEY IN Govt. Lot #9, SECT 26, TWP 3, North, RANGE 10, EAST W. M.

FOR Sternfels Est. DATE Sept. 16, 40



Scale 1 inch = 400 ft

I do hereby certify that this sketch was made from notes taken during an actual survey by me on Sept 16 1940, and that it correctly represents the field work of said survey.

C. M. Hurlburt,
County Surveyor
Hood River County, Oregon

Helpers Vern Lill

1036

KILHAM 14892

8-158