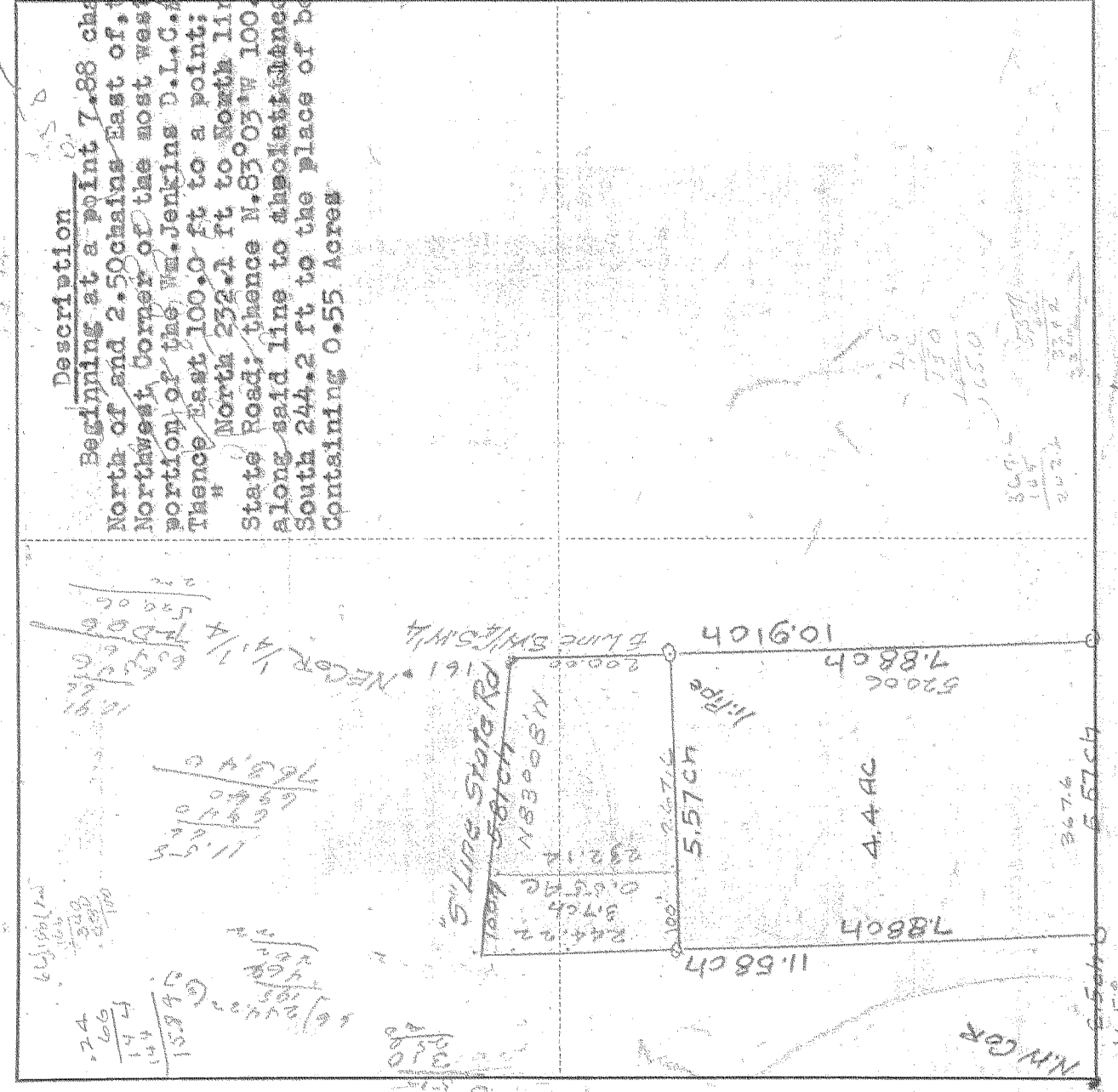


Plat & Description SURVEY IN SW 1/4 SECT 26 TWP 2 North RANGE 10 EAST W. M. FOR Larry Boyd DATE Apr. 3, 1946



Description
 Beginning at a point 7.88 chains North of and 2.50 chains East of, the Northwest corner of the most westerly portion of the Wm. Jenkins D.L.C.#38; thence East 100.0 ft to a point; " North 232.1 ft to North line of State Road; thence N. 83° 03' W 100.7 along said line to the point; thence South 244.2 ft to the place of beg. Containing 0.55 Acres

Scale 1 inch = 2200 feet

I do hereby certify that this sketch was made from notes taken during an actual survey by me on _____ 19____, and that it correctly represents the field work of said survey.

County Surveyor
 Hood River County, Oregon
 8-112

1022

Helpers

Description of Tract
 From Larry Boyd to Moyer Rodgers

Beginning at a point 2.5 chains East of the N.W. Corner of the most westerly portion of the Wm. Jenkins D.L.C.#38; thence North 7.88 chains to a point; thence East 5.57 chains, a portion of this line being on the North side of a fir hedge, to an iron pipe on the East line of the SW 1/4 of Section 26, Twp. 3, N. R. 10, E. W.M.; thence South along said East line 7.88 chains to the North line of said D.L.C.; thence West 5.57 chains to the place of beginning. Containing 4.4 Acres