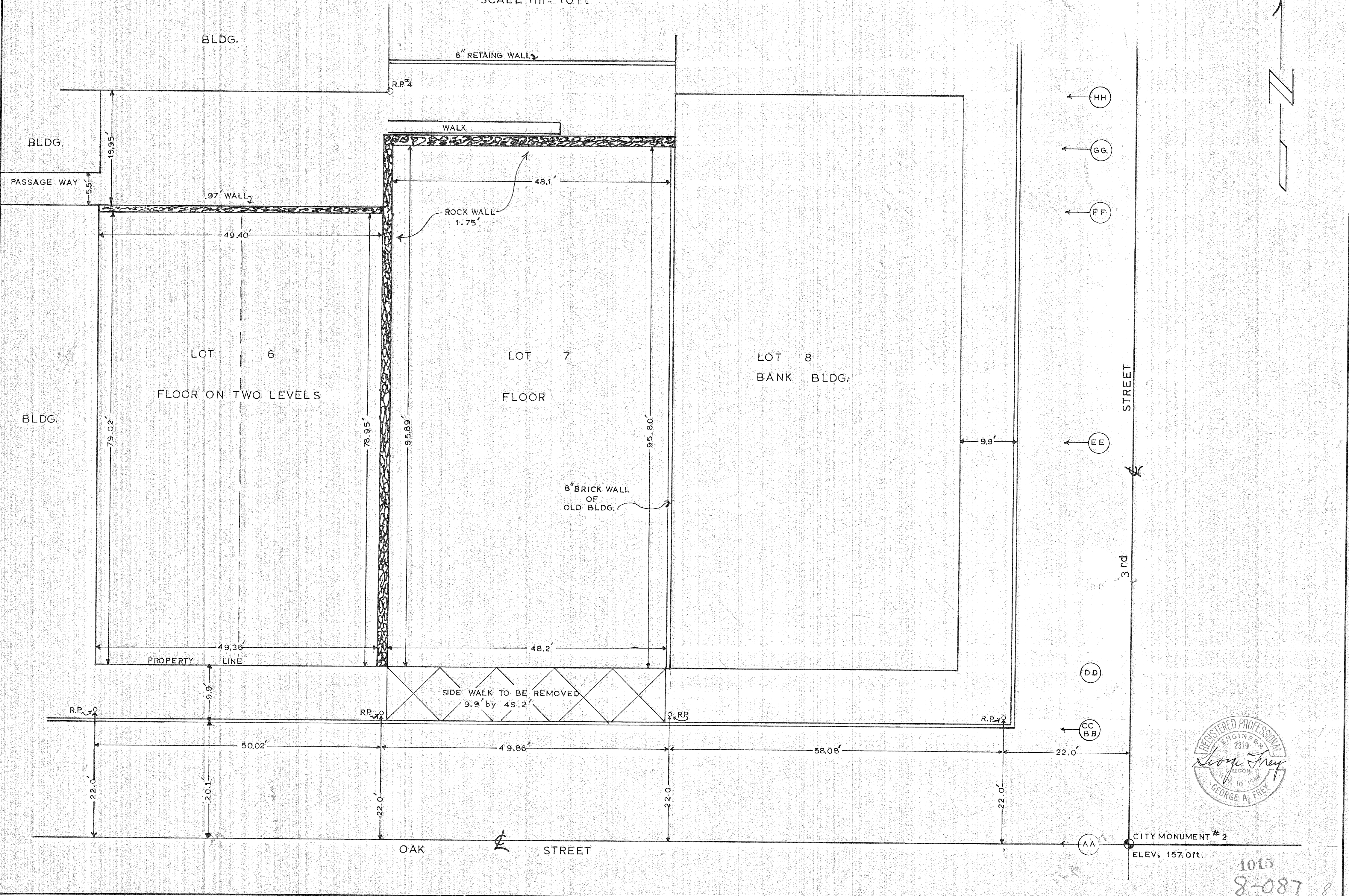


PLAT OF LOTS 6 & 7 BLOCK "C"
 FIRST ADDITION WEST TO THE CITY
 OF
 HOOD RIVER OREGON
 IN
 SW 1/4 SE 1/4 SEC 25 T3N R10E WM
 SCALE 1in= 10ft



CITY MONUMENT # 2
 ELEV. 157.0ft.

1015
 8-087