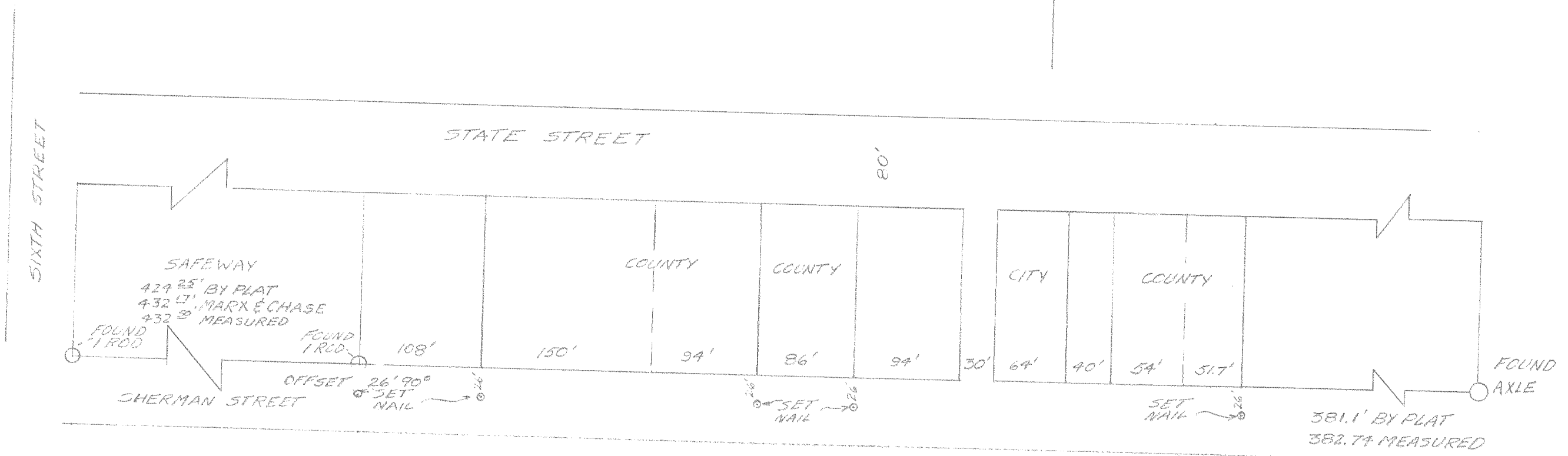


HOOD RIVER COUNTY  
SURVEY OFFICE

SURVEY IN LOT M 1<sup>ST</sup>  
SOUTH ADDITION TO CITY  
OF HOOD RIVER

DATE: 3/25/71	JOB NO. _____
SCALE: 1"=100'	FILE NO. _____
DRAWING: WCB	SHEET 1 OF 1

CHART-PAK, INC. LEEDS, MASS. SPK 3577



**FILED**

MAR 25 1971

*Carlos Van Elberg*  
COUNTY CLERK

By \_\_\_\_\_  
DEPUTY

SW 1/4 SE 1/4 SEC 25 T3N R10E WM

1010  
8-068

#17

On March 24, 1971, the County Survey Office received a memorandum from District Attorney, Hull, through Mr. Almcraants indicating they wished to re-establish the East property line of Tax Lot No. 5700 in the First South Addition to Hood River in Section 25, Township 3 North, Range 10 East W. M. Also described as all of lot "M" and the East 54 feet of lot "L" in the aforementioned First South Addition as per Volume 44, Page 173, Deed Records, Hood River County, Oregon.

The Survey Crew proceeded by setting an offset line 26 feet South and parallel to the South rights-of-way line of Sherman Avenue, then measured the plat distance along lots "F" through "L" to a point on the projected East property line of Tax Lot No. 5700 and there set a concrete-type nail with a Hood River County tag to mark this line.

A map of this project and a resume of the field notes will be on file in the Survey Office and a copy of each will be forwarded to the parties concerned.

Ed Graham

Chief of Party