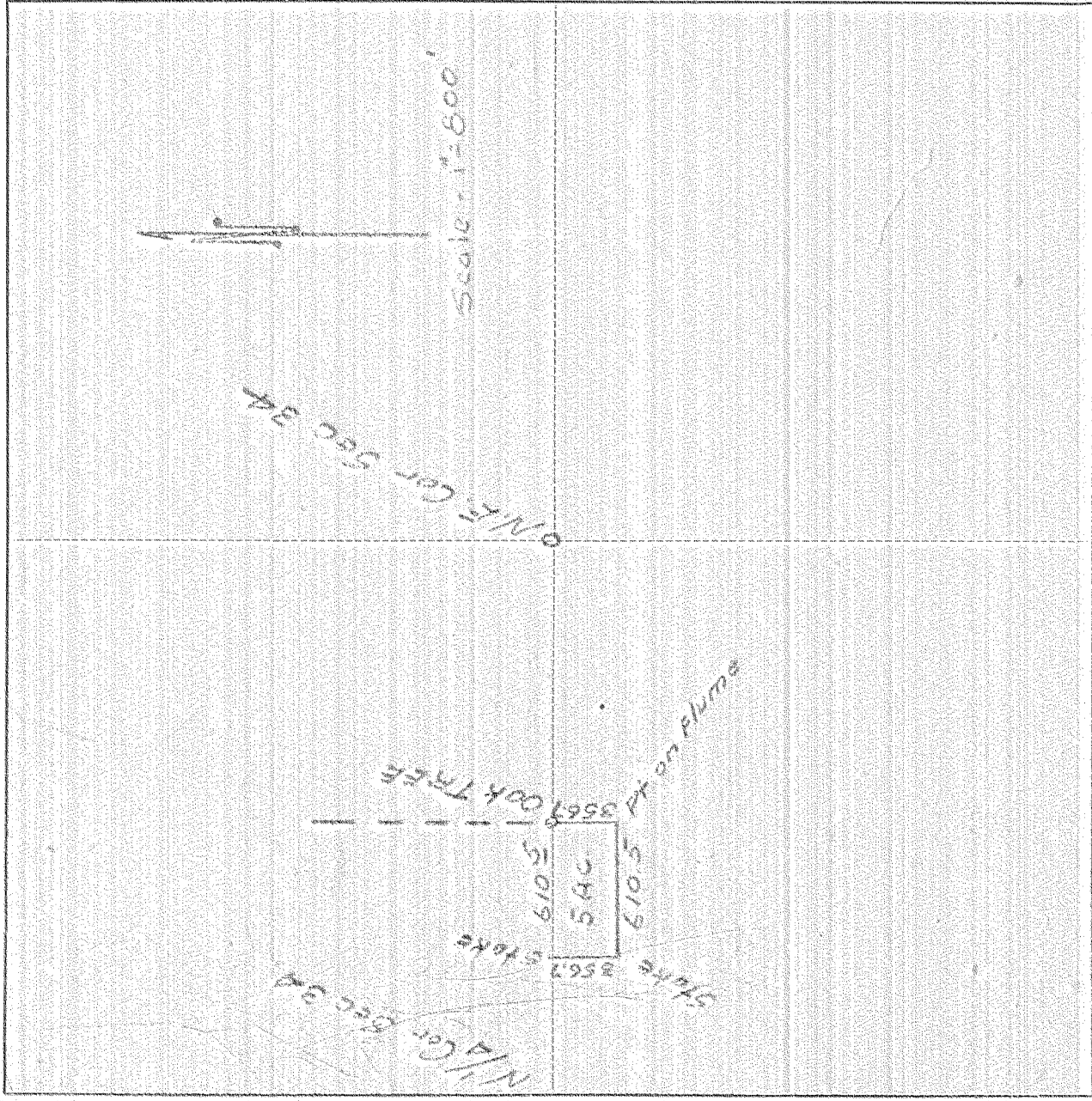


SURVEY IN N.W. 1/4 N.E. 1/4 SECT. 34 TWP. 3 N RANGE 10 EAST W. M.

FOR Fred Patterson

DATE Mar. 31, 1928



I do hereby certify that this sketch was made from notes taken during an actual survey made by me on March 31 1928, and that it correctly represents field work of said survey.

Ed. Hobson
Deputy County Surveyor
Hood River County, Oregon

Helpers Fred Patterson

0984

2-169