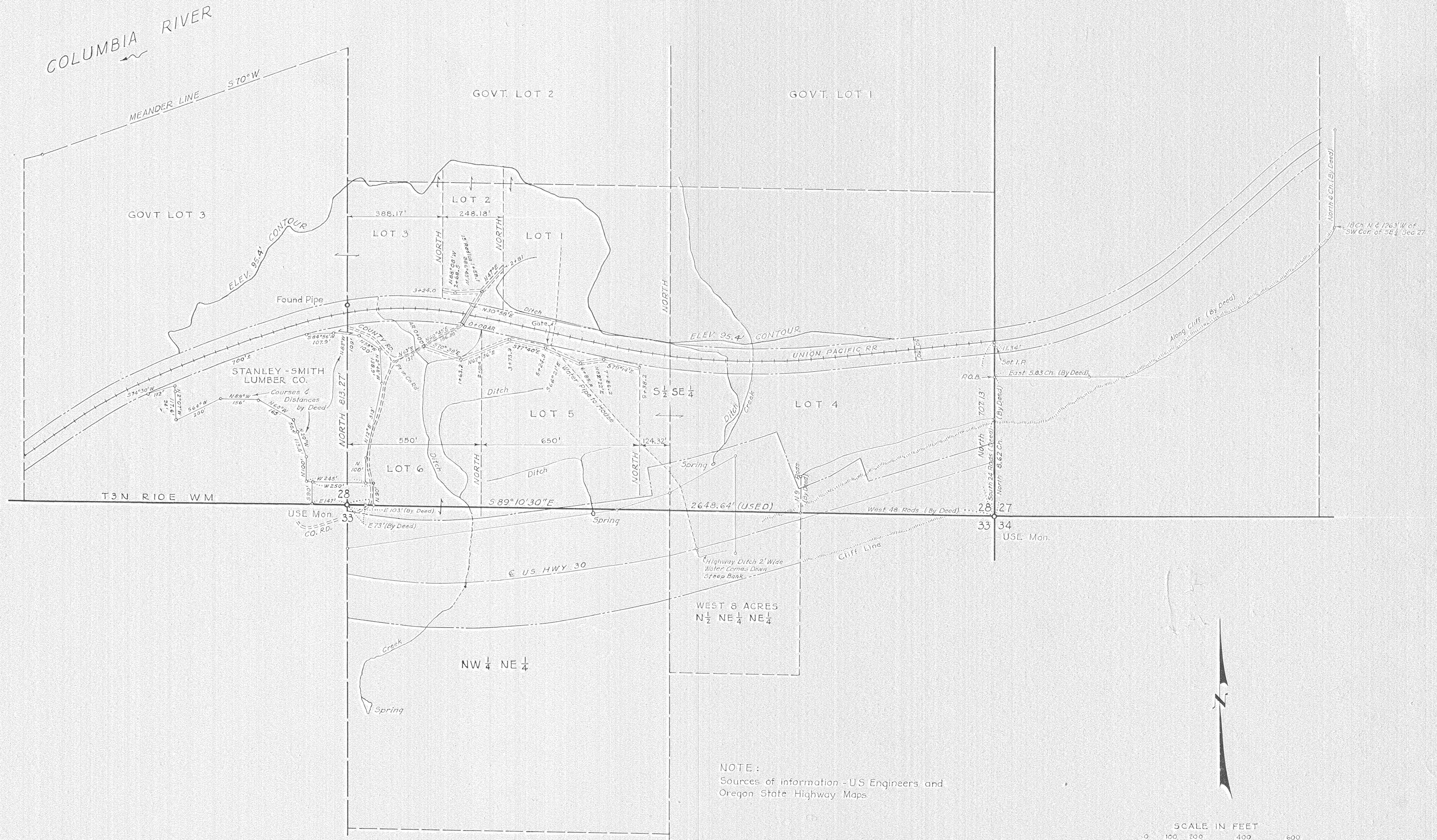


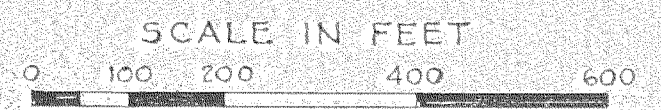
FILED

JUL 11 2 24 PM 1957

Stanley
COUNTY CLERK
M. L. Brumpton
DEPUTY



NOTE:
Sources of information - US Engineers and
Oregon State Highway Maps



0980

1-155

I hereby certify the above map to be accurate & correct
in accordance with available information.

REGISTERED
SURVEYOR
OREGON
Howard C. Clary 3/7/1957
COUNTY CLERK
129

DIVISION OF A PORTION OF
PEARL MORTON PROPERTY
IN SECTIONS 28 & 33 T3N R10E WM
HOOD RIVER COUNTY, OREGON