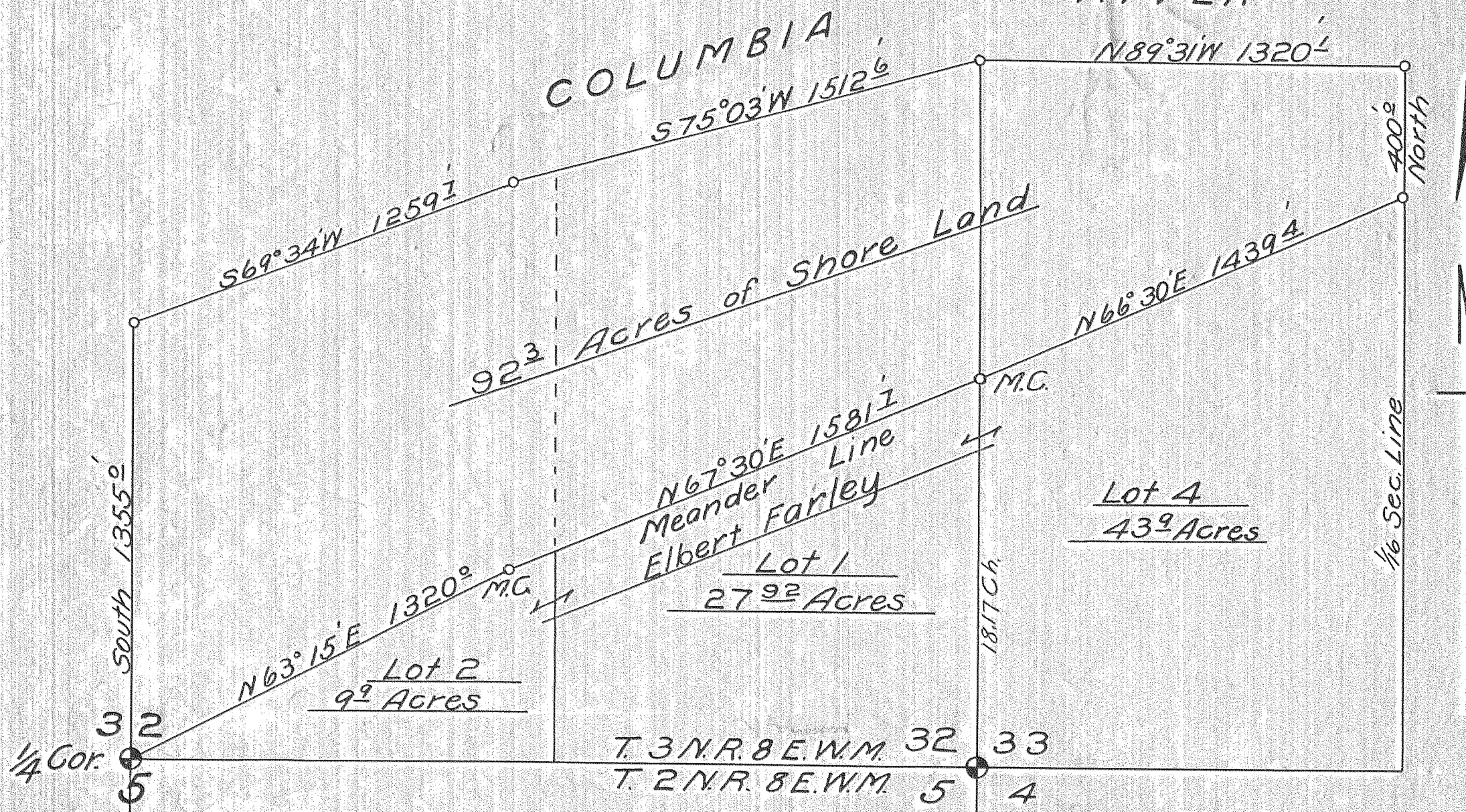


Map accompanying application of Elbert Fairley to purchase lands between high and low water North of the Elbert Farley Land Claim, in Sections 32 and 33, T.3N.R.8E.W.M. Hood River Co., Ore.

RIVER

COLUMBIA



Scale: 1" = 400'

Oct. 23, 1924.

C. M. Hurlbut.  
#766 Co. Sur.

0967 # 2-036 |