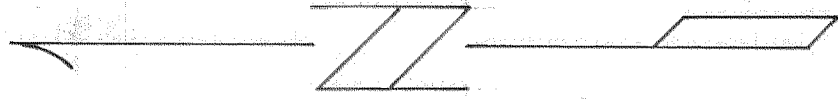
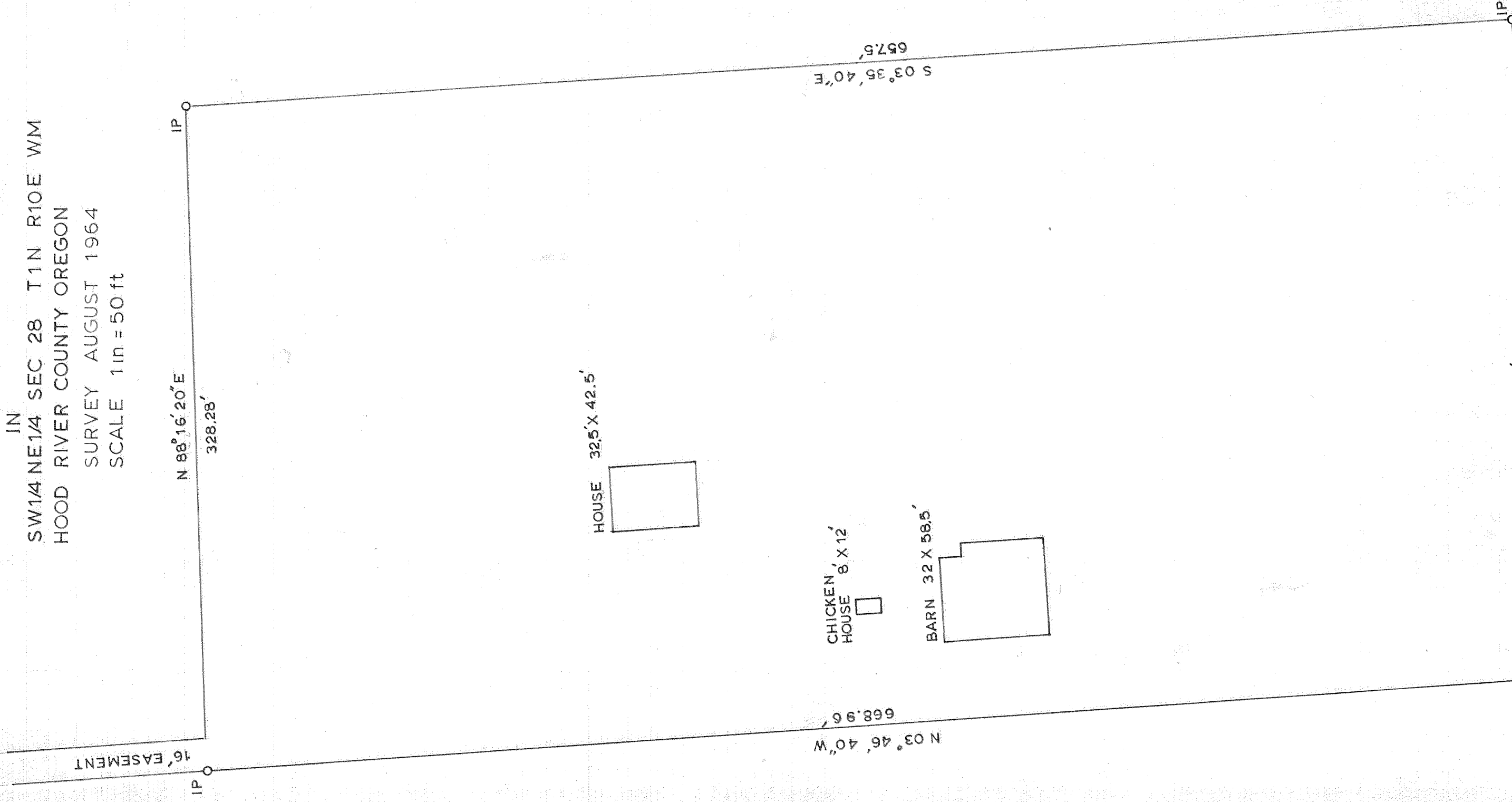


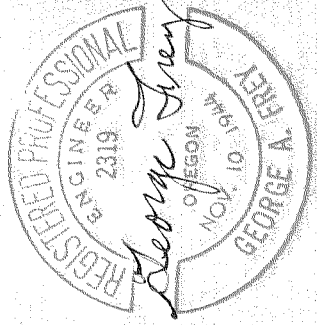
PLAT OF A TRACT OF LAND

IN
SW1/4 NE1/4 SEC 28 T1N R10E WM
HOOD RIVER COUNTY OREGON
SURVEY AUGUST 1964
SCALE 1 in = 50 ft



BEARING ESTABLISHED
BY
SOLAR OBSERVATION

CENT 1/4 S
SEC 28
T1 N R10 E WM
IRON BOLT



0964

21-69

#2-013