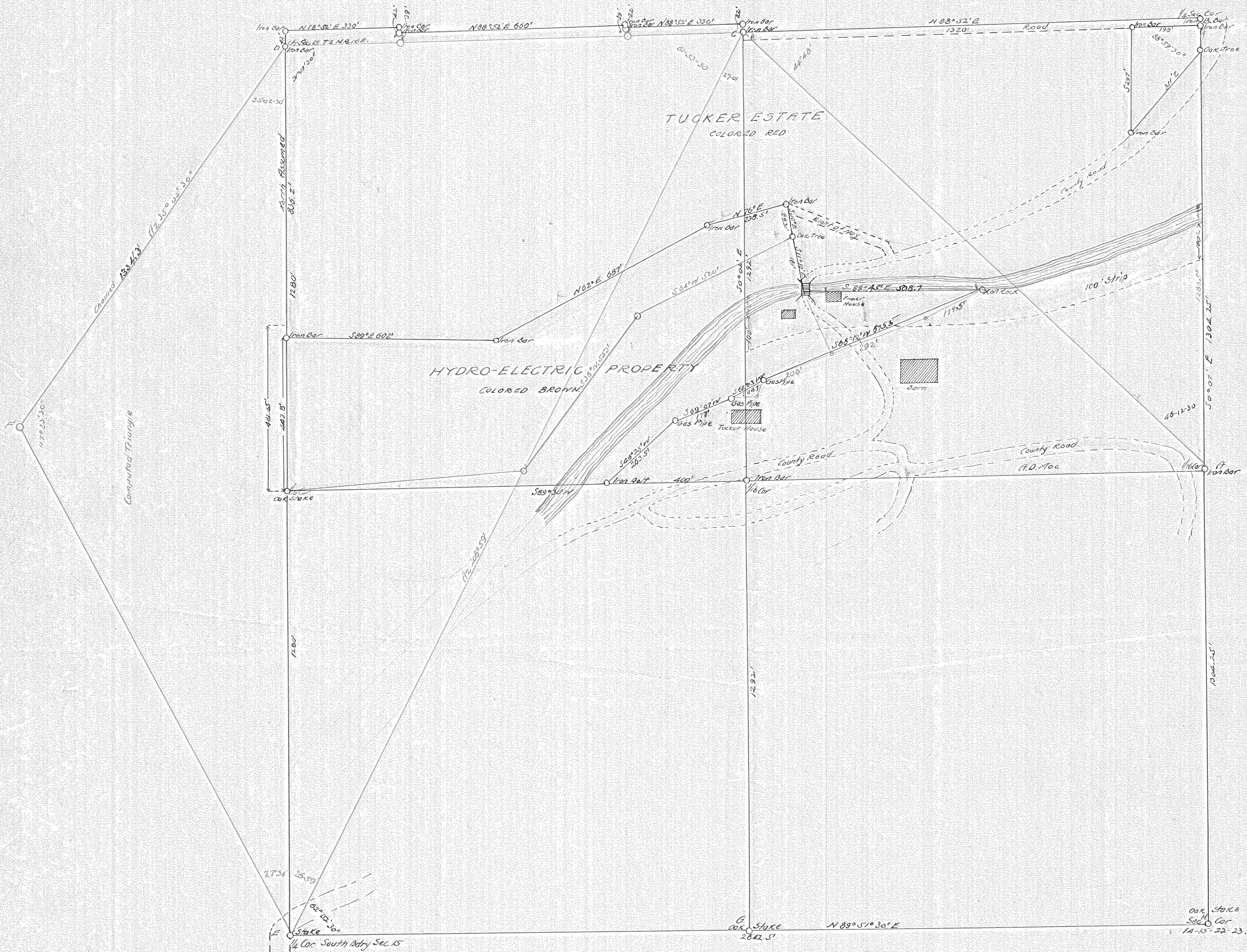


PLAT
OF SUBDIVISION OF S.E. 1/4 OF SEC. 15, T. 2N., R. 10E., W. 4M.
SHOWING TUCKER ESTATE AS THE SAME
NOW EXISTS.

SURVEY MADE BY *F. A. Anderson*
Surveyor

DATED SEPT. 9th 1912.

Scale 200' = 1" inch



LEGEND
Line DE assumed due North.
All courses & angles with reference thereto
Base Line DE chained twice
Line DE Computed from S DEF
Line CG chained
Line AH chained
Line AB Computed from triangle ABC.
Line DB chained
Line EH chained
All points marked on Ground as indicated on Plat.