

NE. Cor. E 1/2 NW 1/4

Sec. 15, T. 2 N., R. 10 E., N.M.

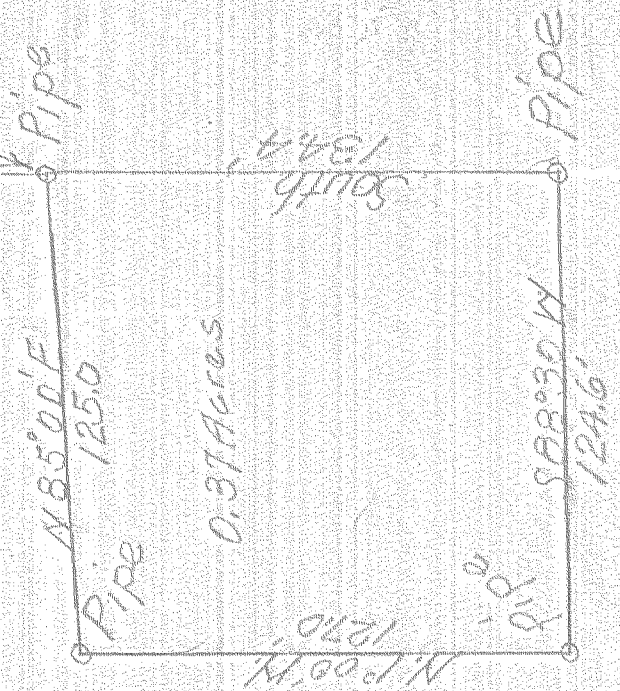
King Bolt



Description for a Warranty Deed.

Beginning at a point on the east line of the W 1/2 of the Northwest quarter of Section 15, T. 2 N., R. 10 E., W. M. at a distance of 2025 feet south of the northeast corner thereof; thence South along the subdivision line a distance of 134.4 feet to an iron pipe; thence S 88° 30' W a distance of 124.6 feet to an iron pipe; thence N 1° 00' W a distance of 127.0 feet to an iron pipe; thence N 85° 00' E a distance of 125.0 feet to the place of beginning, containing 0.37 Acres, more or less.

Scale: 1 in = 50 ft.



Survey for Robert F. Moller  
December 8, 1950.

Edw. Hobson, County Surveyor.

# 4-189

0952