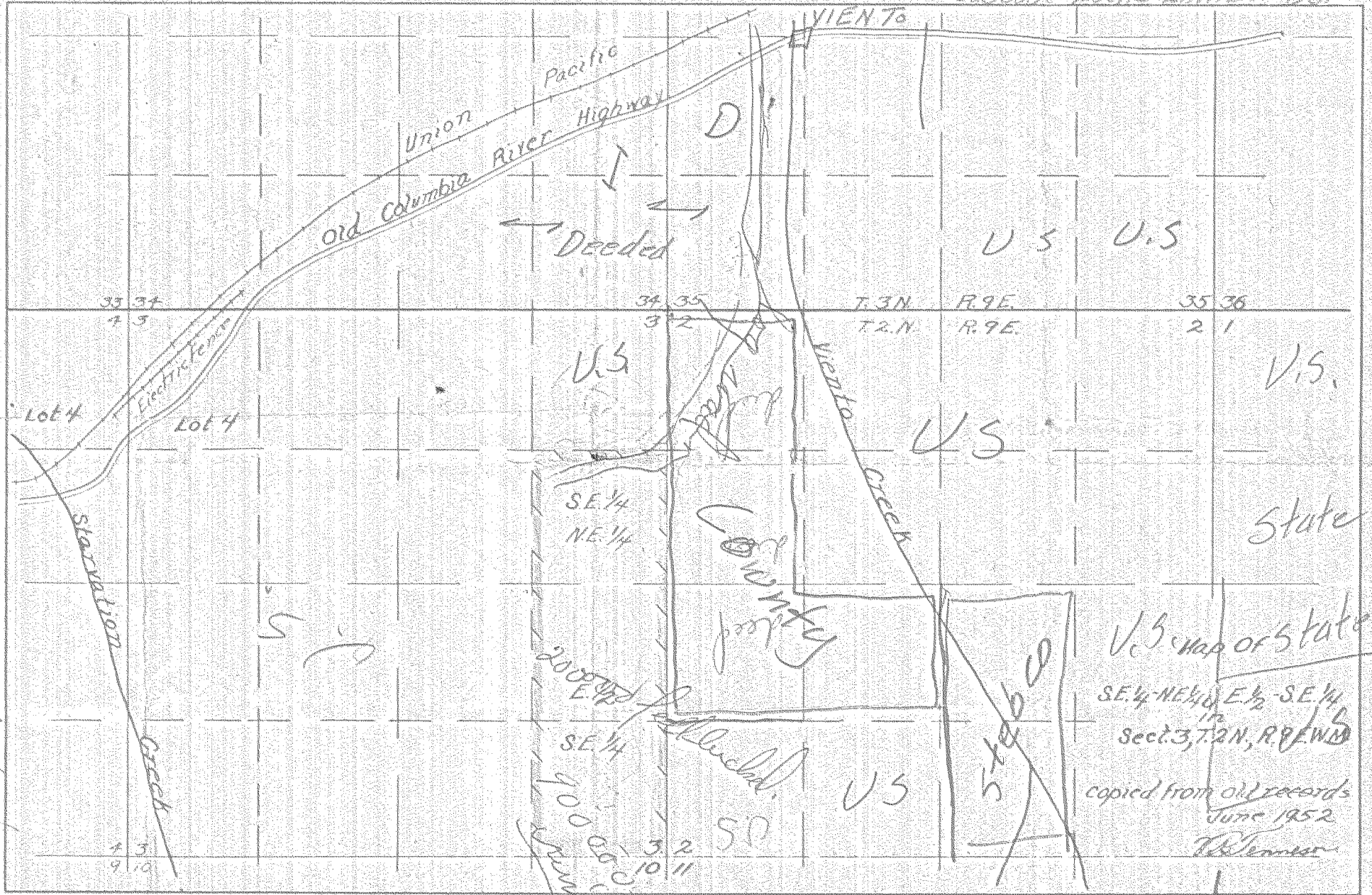


Hubbs Tracts

Cascade Locks Lumber Co.



Foot of grade
Hubbs
and small
grade of Hubbs

U.S. map of state
SE 1/4 NE 1/4 E 1/2 SE 1/4
in
Sect. 3, T. 2N, R. 9E W. 1/2
copied from old records
June 1952
R. Penner

0935

ste bco # 2556