

PLAT

-OF-

PORTION OF GOV. LOT 2.

Sec. 5, T. 2 N. R. 9 E. W. M.

As surveyed by County
Surveyor's Office April 5,
1930. Hood River, Oregon.

6.3 Ac.

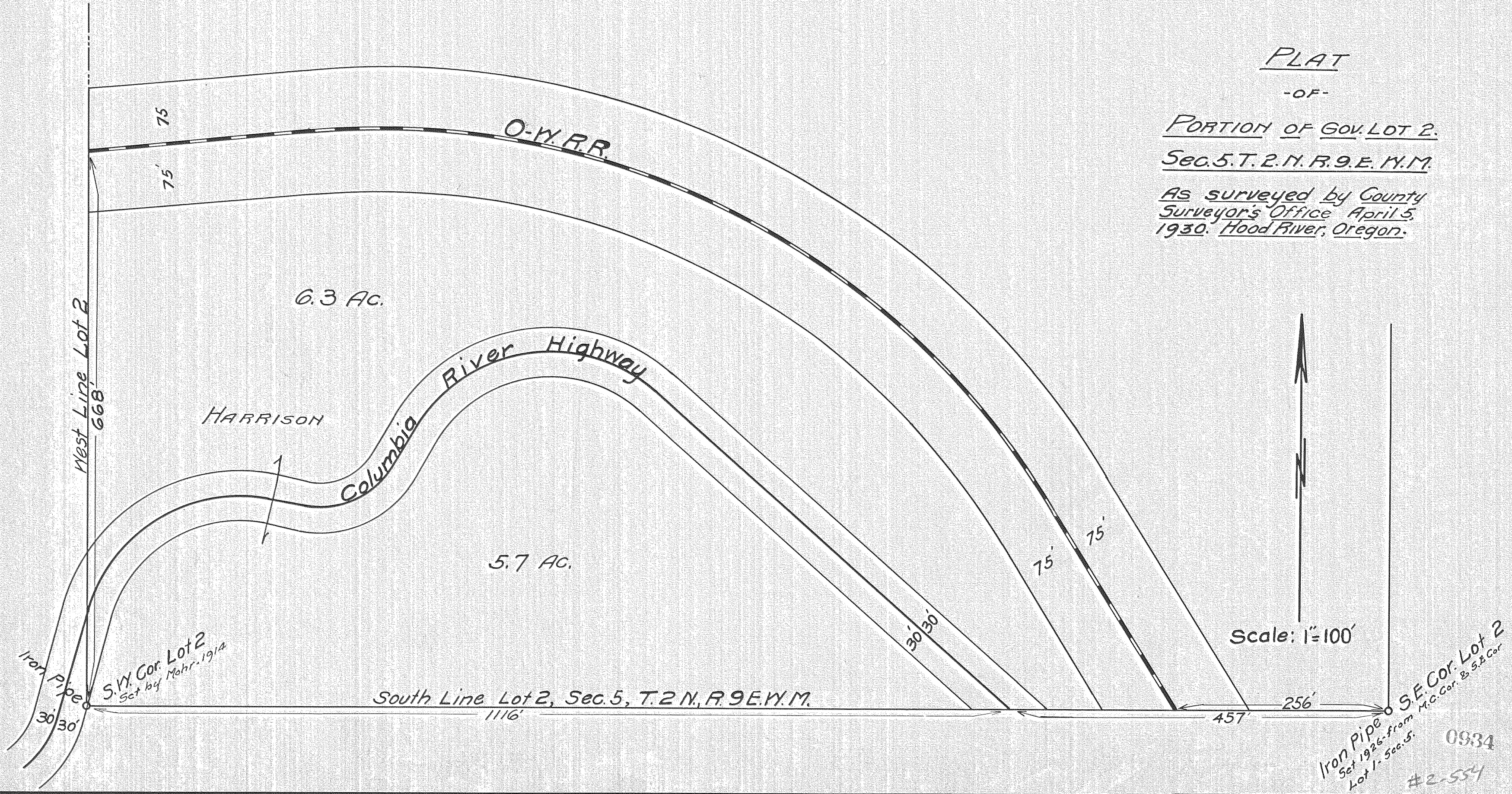
HARRISON

Columbia River Highway

5.7 Ac.

South Line Lot 2, Sec. 5, T. 2 N., R. 9 E. W. M.

Scale: 1"=100'



668'

75'
75'

75'
75'

30/30'

1116'

457'

256'

Iron Pipe
30/30'

S.W. Cor. Lot 2
Set by Mohr, 1914

S.E. Cor. Lot 2
M.C. Cor. B & S. Cor.
Iron Pipe
Set 1926 from
Lot 1 - Sec. 5.
0934
#2-554