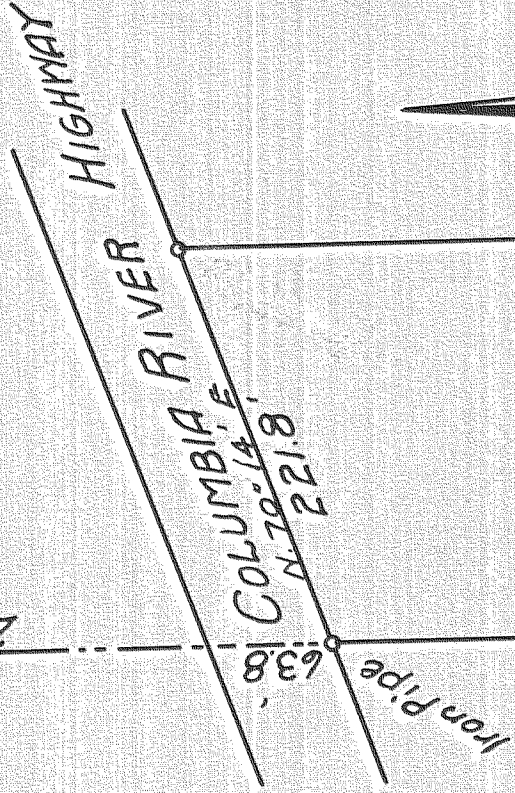


SM Cor. Sec. 6
T. 2N. R. 8E. M. 1.

West 1320'
Iron Pipe

2680'



N 0° 11' E

723.3

3.64 AC.

798.3
S. 0° 11' W



Scale: 1 in = 100 ft.

Office of Co. Engr
Hood River Co., Ore.
Nov. 20, 1928

Iron Pipe

208.7

N. 89° 49' W

Iron Pipe

0916

2-499

For Hood River Co. 11/20/28