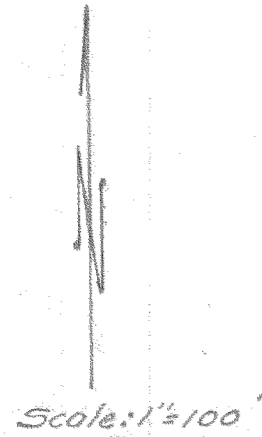
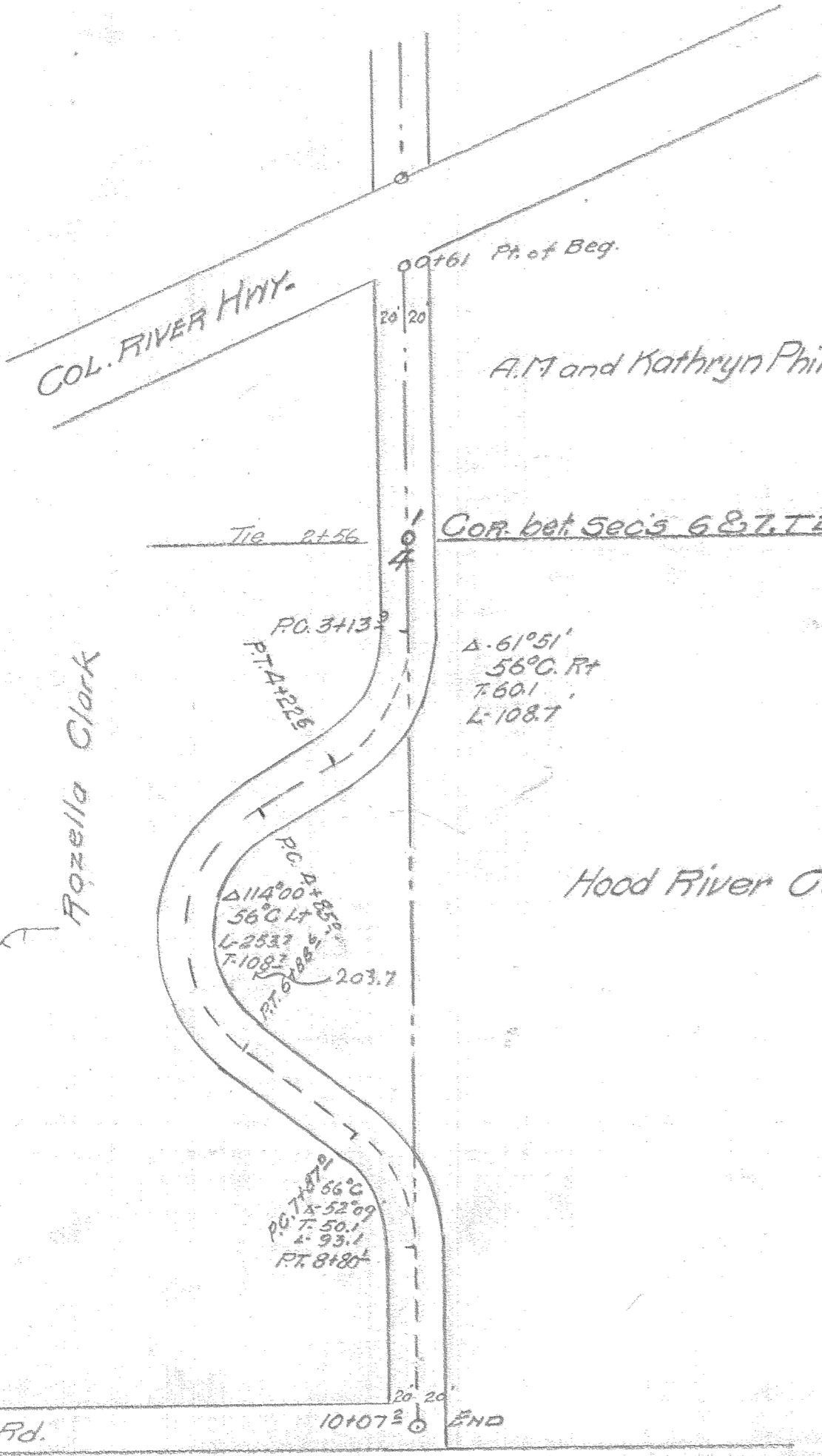
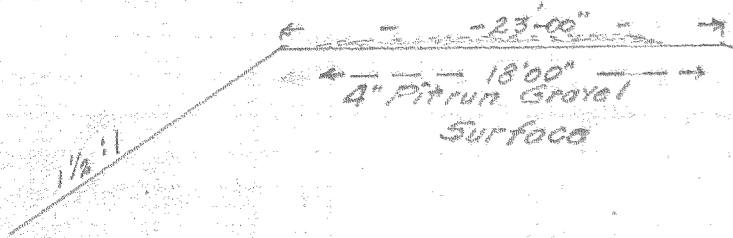


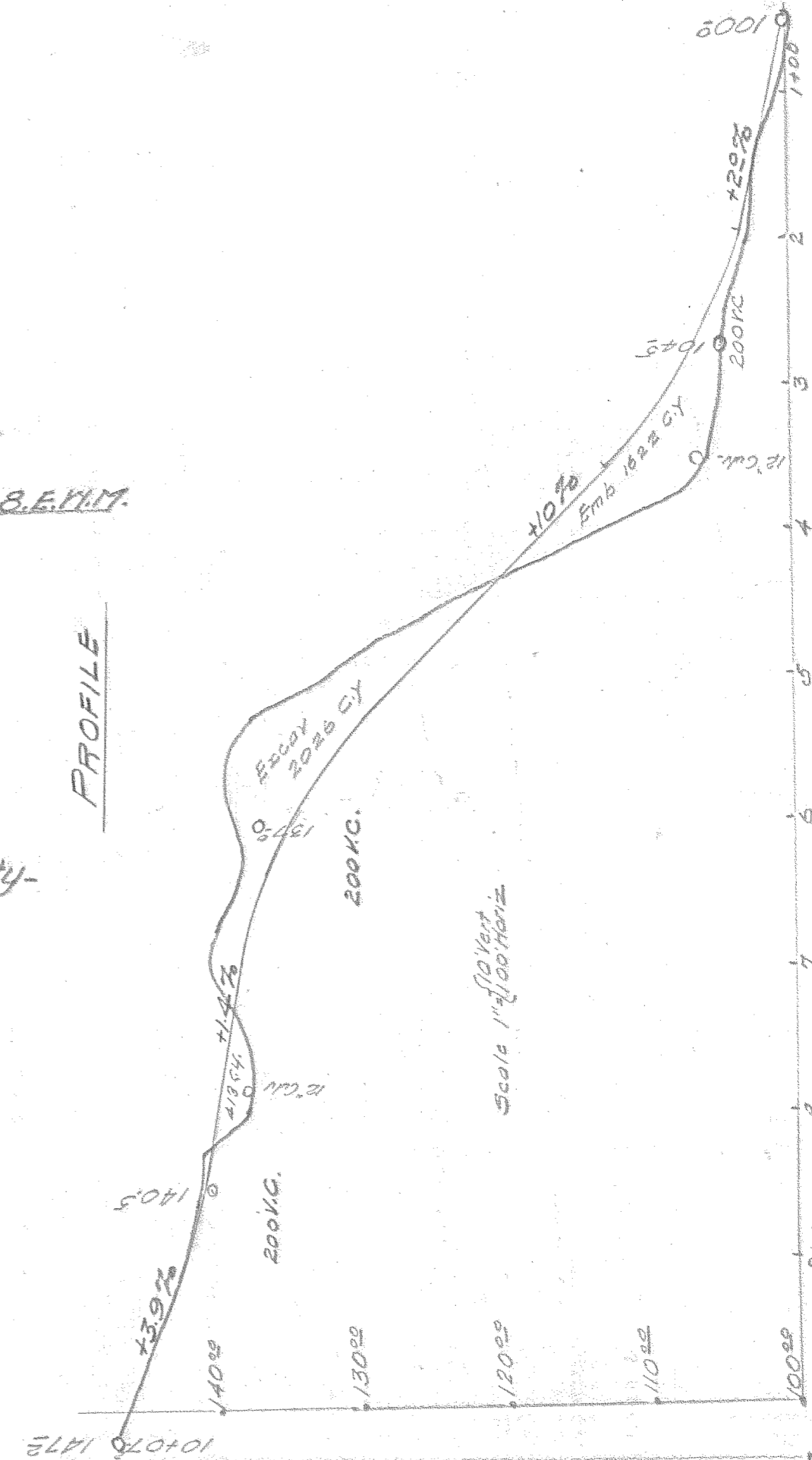
PLAN



Typical Section  
Scale 1"=10'



PROFILE



Scale 1"=30 Vert  
1"=100 Horiz

HOOD RIVER COUNTY  
OREGON  
PLAN SHOWING  
PROPOSED ROAD  
IMPROVEMENT  
IN SEC. 7, T.2, N.R.8, E.1111  
5/15/41 By G.M.H.  
C. Engr.

0911

# 3