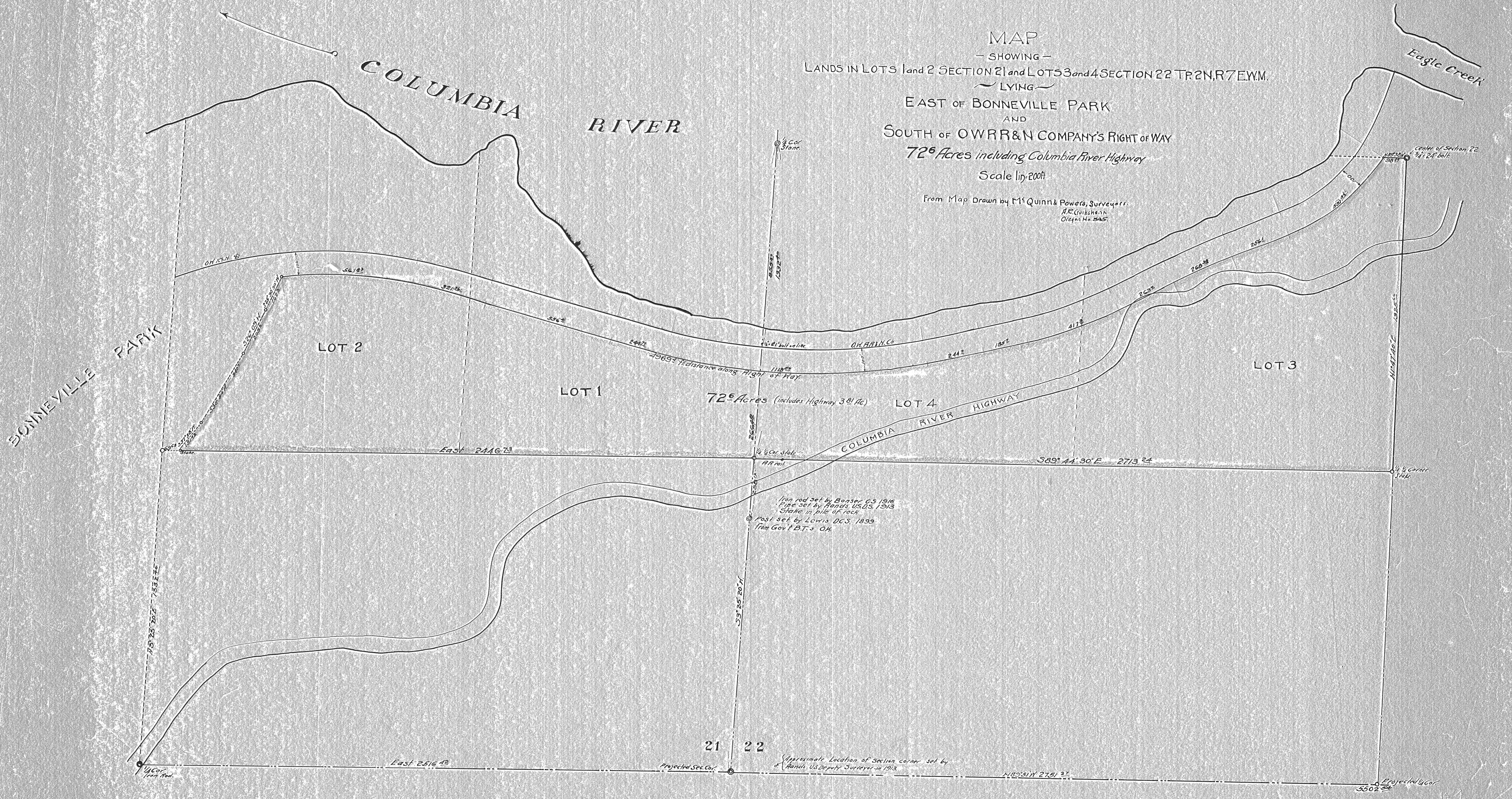


MAP
 - SHOWING -
 LANDS IN LOTS 1 and 2 SECTION 21 and LOTS 3 and 4 SECTION 22 T.2N, R.7E, W.M.
 LYING

EAST OF BONNEVILLE PARK
 AND
 SOUTH OF OWRR & N COMPANY'S RIGHT OF WAY
 72⁶ Acres including Columbia River Highway
 Scale 1 in = 200 ft

From Map Drawn by M^cQuinn & Powers, Surveyors
 J. R. Goukshank
 Oregon No. 345



21 22

1885
 1887
 #2447