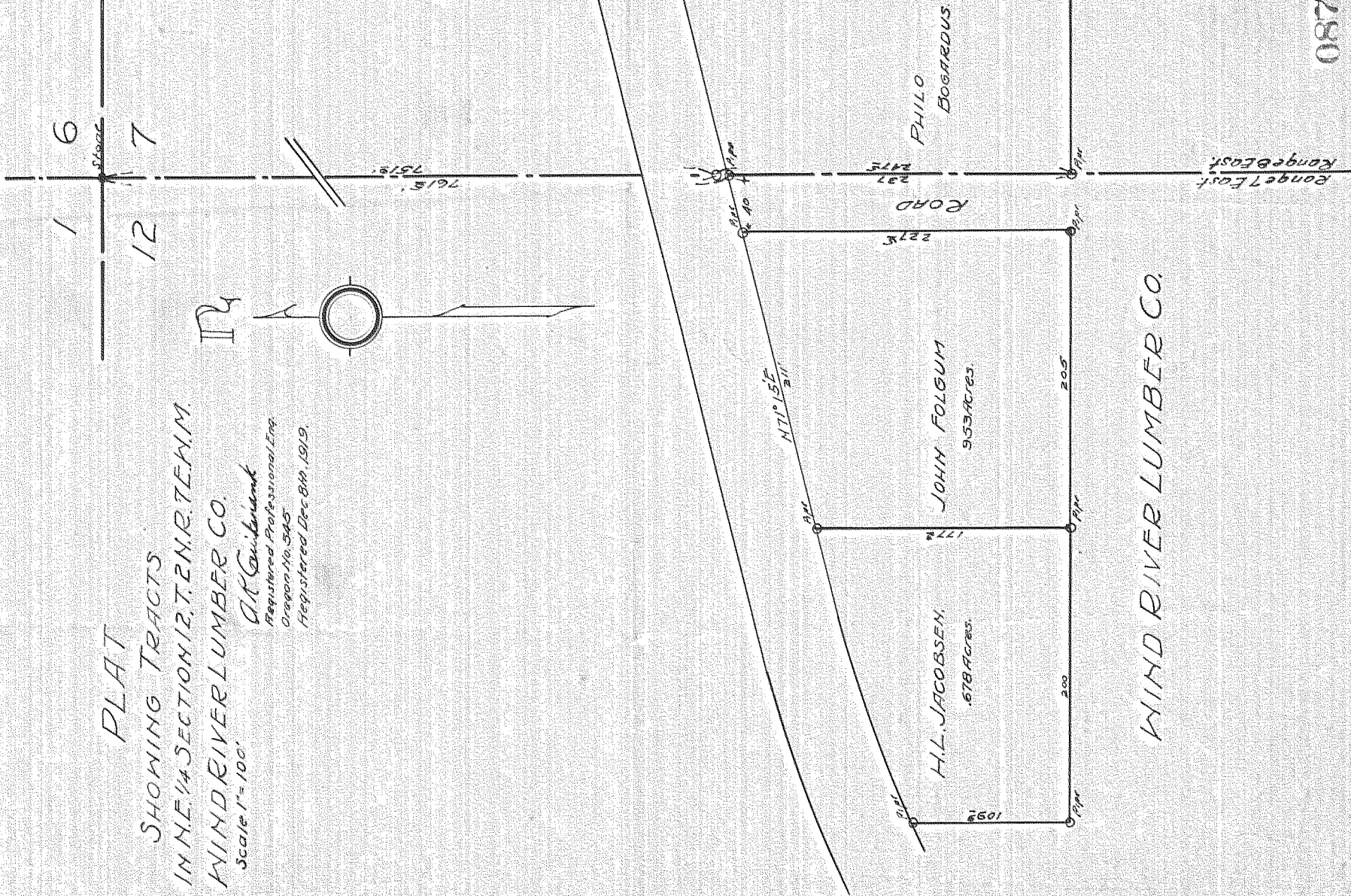
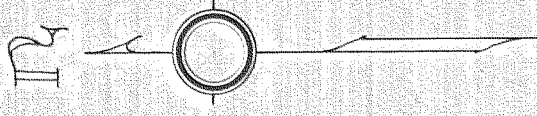


PLAT
 SHOWING TRACTS
 IN NE 1/4 SECTION 12, T2N, R7E, T11M
 WIND RIVER LUMBER CO.
 Scale 1" = 100'

A. K. Guibiniant
 Registered Professional Eng.
 Oregon No. 3045
 Registered Dec 8th, 1919.



0872

13

#20910