

11

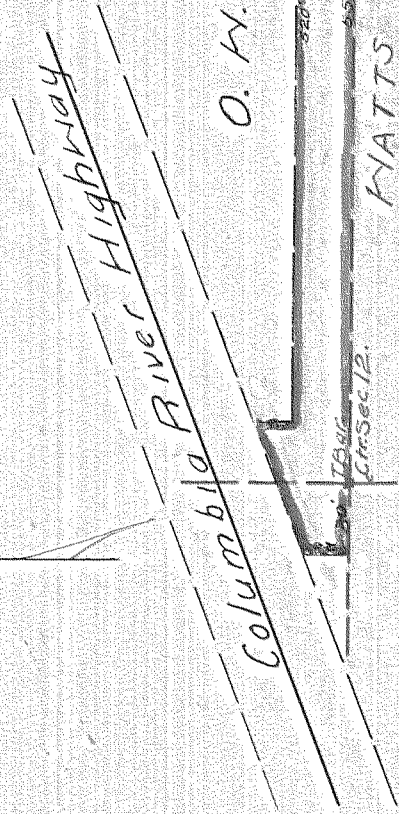
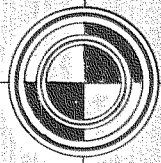
# PLAT

OF

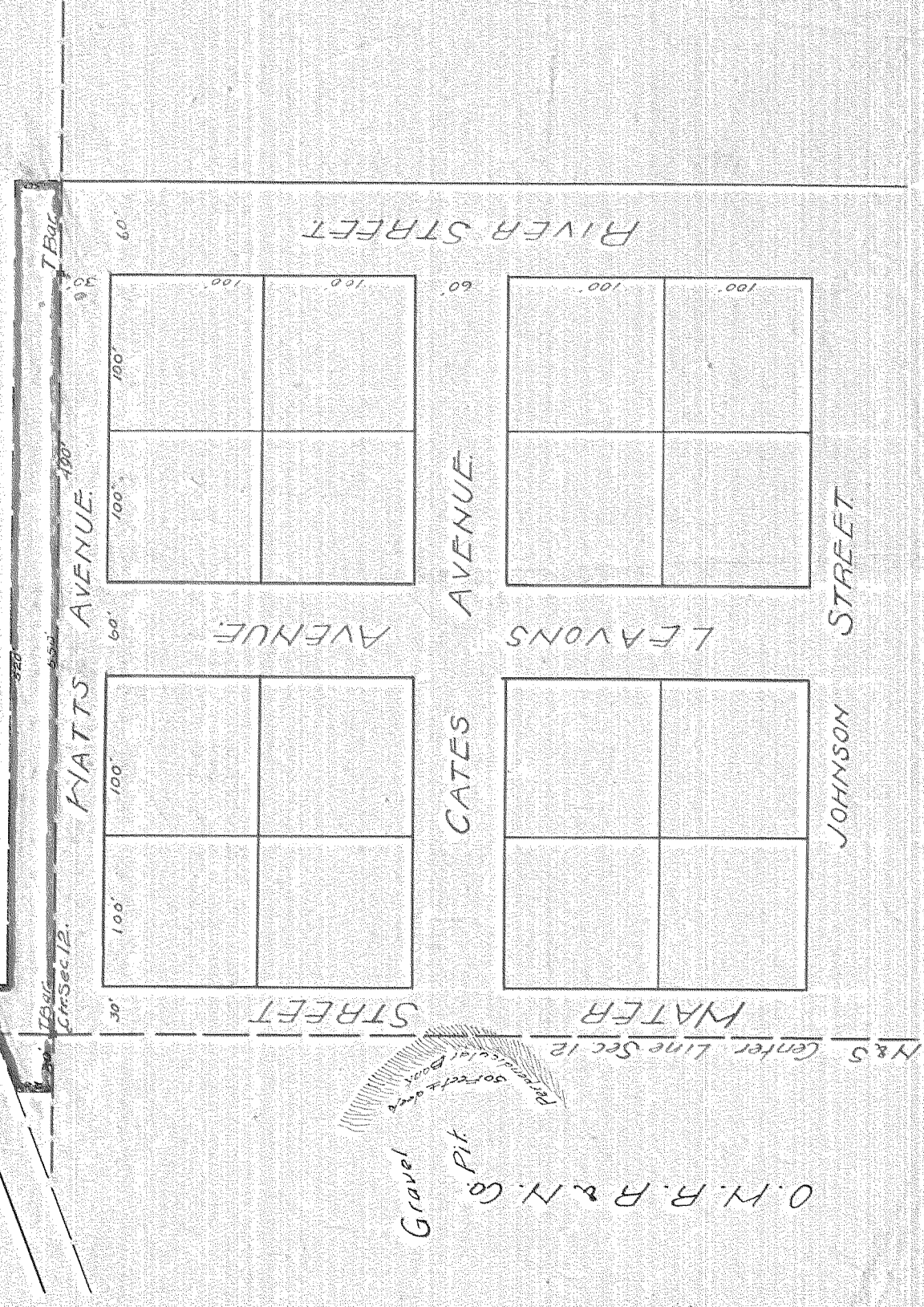
## LEAVONS HEIGHTS ADDITION TO CASCADE LOCKS, ORE.

In Section 12, Twp. 2 N., R. 7 E., N.M.  
Showing Lands Required of the O.W.R.R. & N.Y. Co.  
by Hood River County, for Road Purposes.  
Scale 1 inch = 100 Ft. Nov. 23<sup>rd</sup> 1917

A.P. Webster  
Civil Engineer



O. W. R. R. & N. Y. Co.



0869  
#2-449