

Filed for Record Nov. 30 1894

Loe
Reynolds

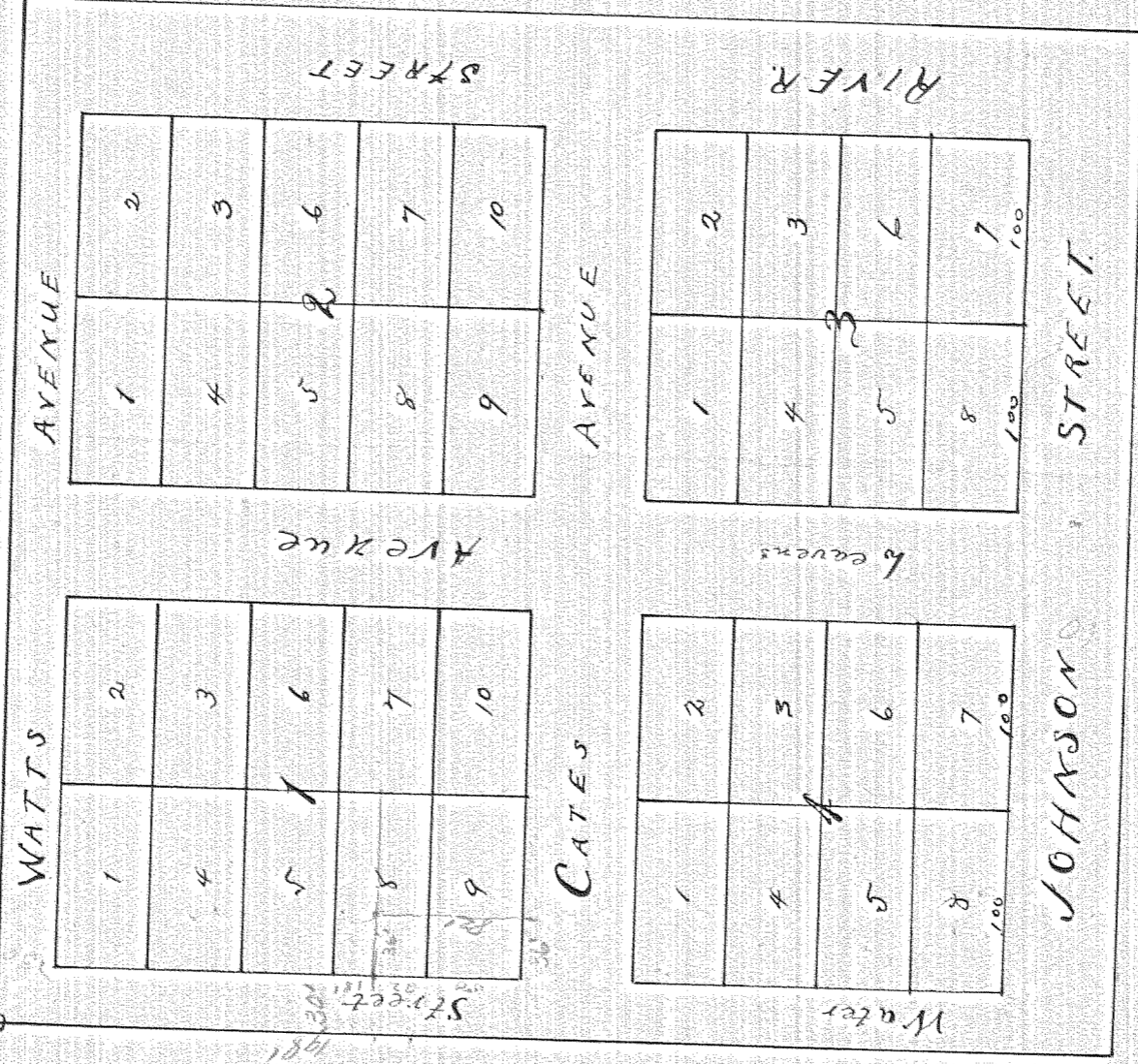
Heights

Adjoining Cascade Heights

As laid out by J. A. Reynolds

And being a part of the NW 1/4 of the SE 1/4 of Section 12 Township 8 North Range 7 East Yellowstone Meridian

Center of Section 12



125/116

12-299

14-637

14/233

13/106

13/433

Scale 100 Feet = 1 Inch.

66 of Deeds page 575

0860

2-431

94
13