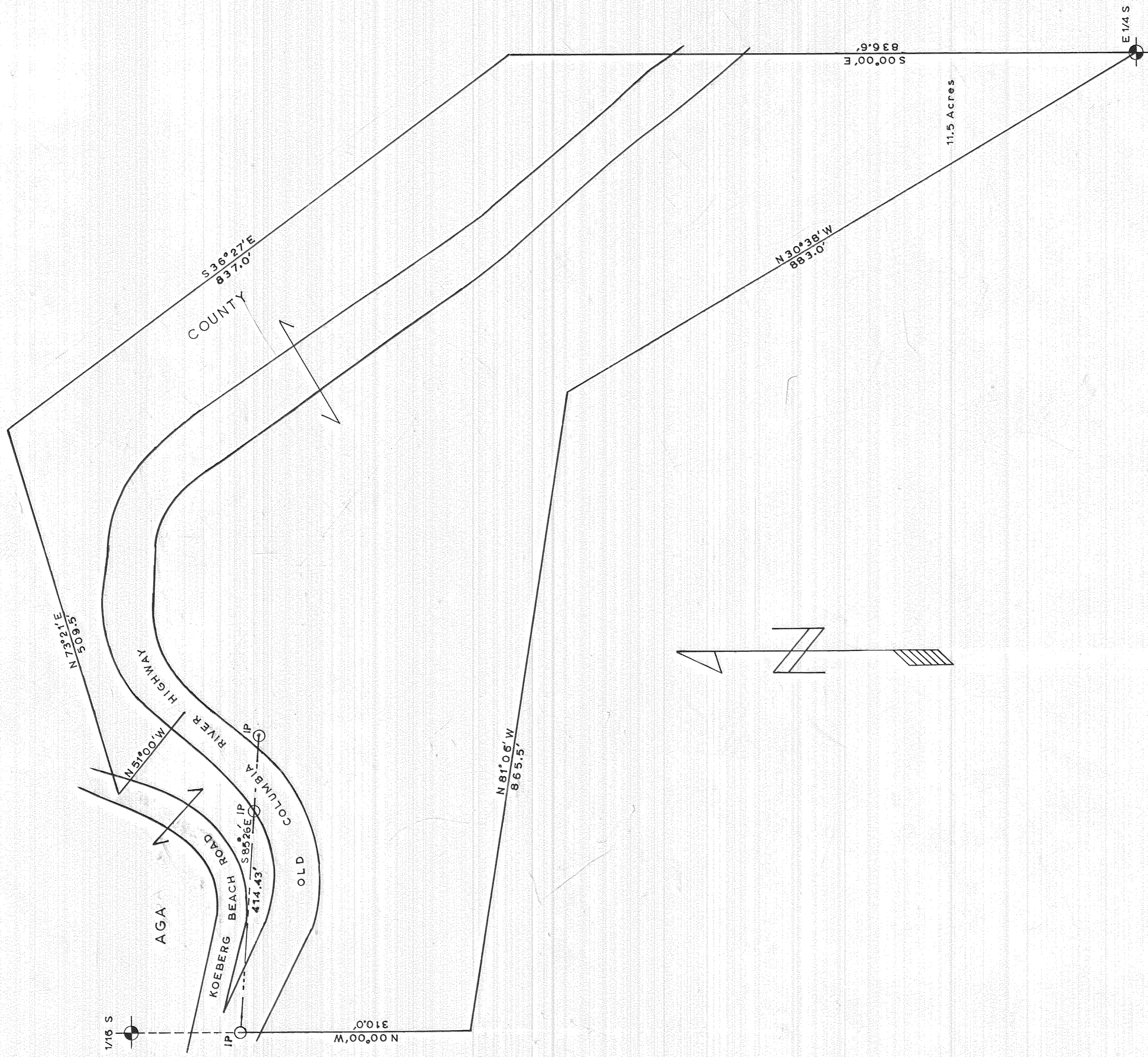


PLAT OF HOOD RIVER COUNTY PROPERTY  
 E 1/2 NE 1/4 SEC 31 T3N R11E WM



11.5 Acres

PLAT OF HOOD RIVER COUNTY PROPERTY  
 TO BE LEASED TO B&D PAVING CO.  
 E 1/2 NE 1/4 SEC 31 T3N R11E WM

PROJECT NUMBER: 6-64

SCALE: 1"=100'

DATE: APRIL, 1964

