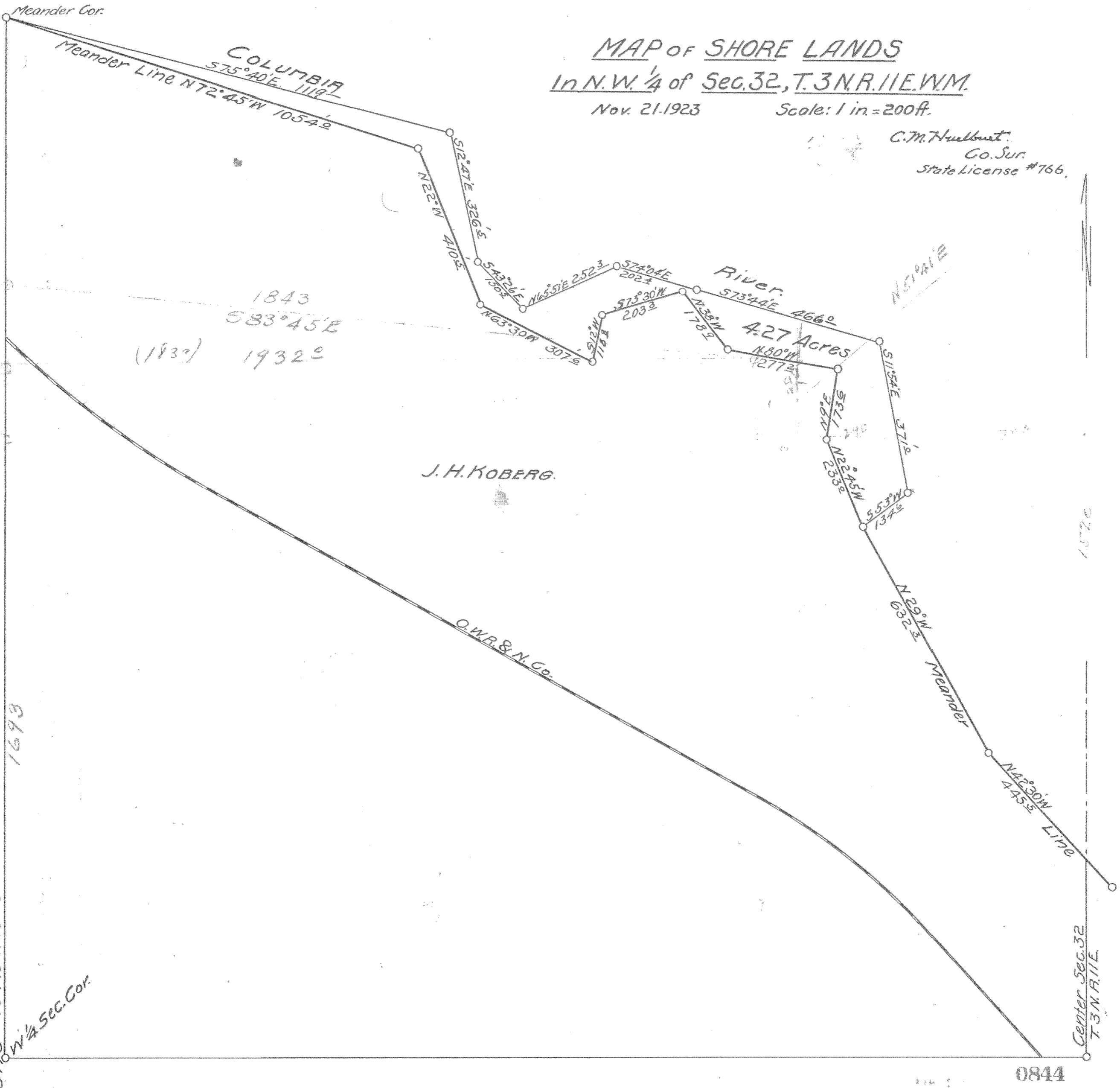


MAP OF SHORE LANDS  
In N.W. 1/4 of Sec. 32, T. 3 N. R. 11 E. W.M.

Nov. 21, 1923

Scale: 1 in. = 200 ft.

C.M. Hurlbut,  
 Co. Sur.  
 State License #766.



5173' to Meander Cor.  
 1880'  
 1693'

0844

# 2-403

26