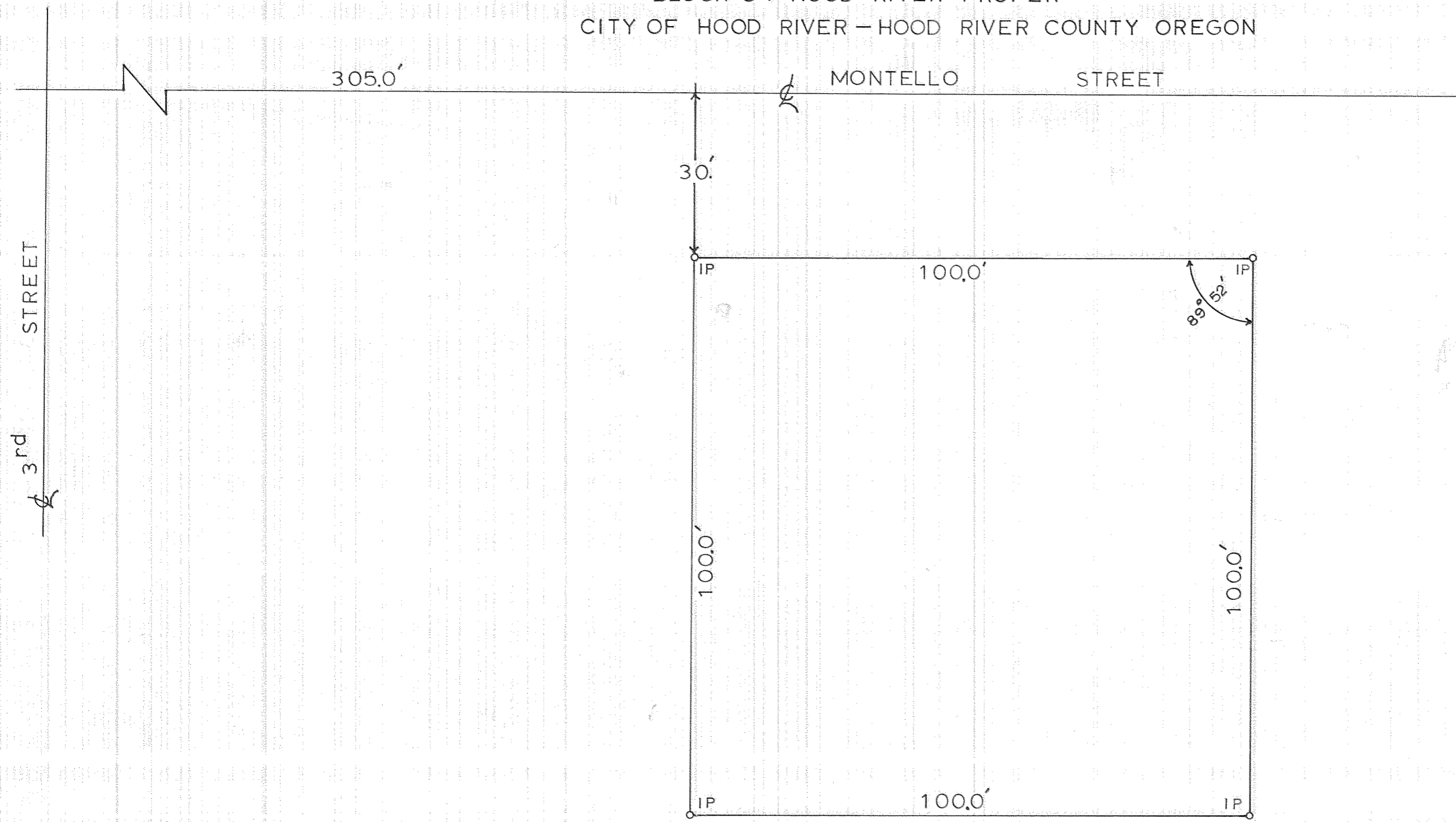


PLAT OF THE RALPH D NANCE PROPERTY
NW1/4 NE1/4 SEC 36 T3N R10E WM
LOT 4, E 1/2 LOT 5 & W 1/2 LOT 3
BLOCK 34 HOOD RIVER PROPER
CITY OF HOOD RIVER - HOOD RIVER COUNTY OREGON



SURVEY NOVEMBER 1964
SCALE 1in = 20ft



0816

33-64

2-346

2