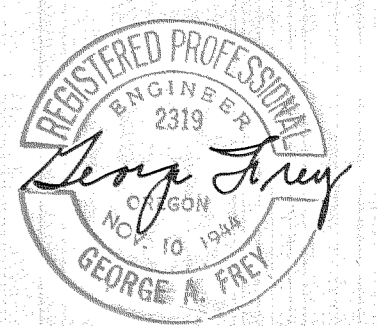
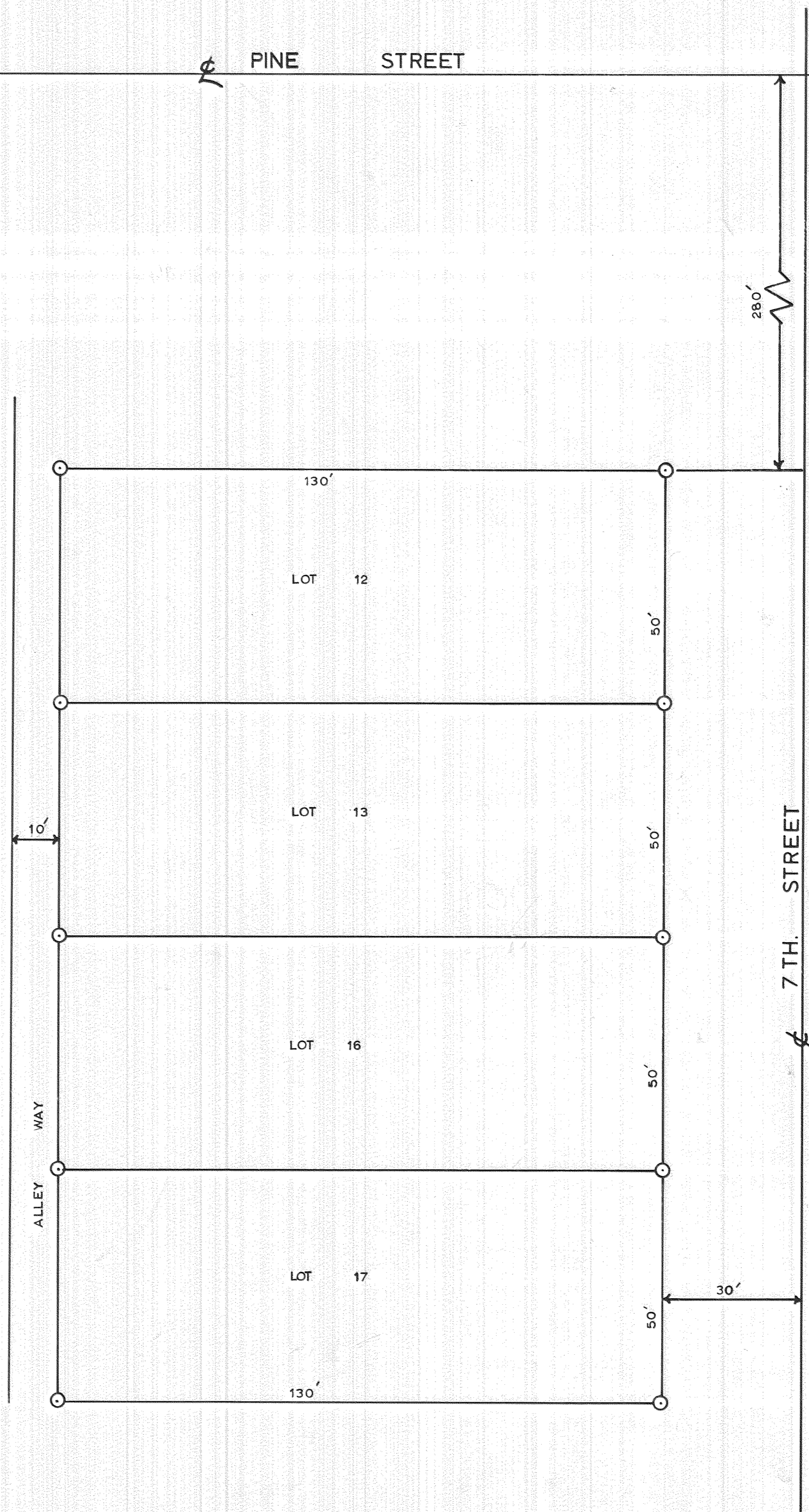


PLAT OF THE W.T. EDMUNDSON PROP.
LOTS 12, 13, 16 & 17 BLOCK "A" OF THE
BARRETT-SIPMA ADDITION OF THE
CITY OF HOOD RIVER, OREGON
SE 1/4 NW 1/4 SEC. 36 T3N R10E WM.



CS97
#2-024
12-64
22