

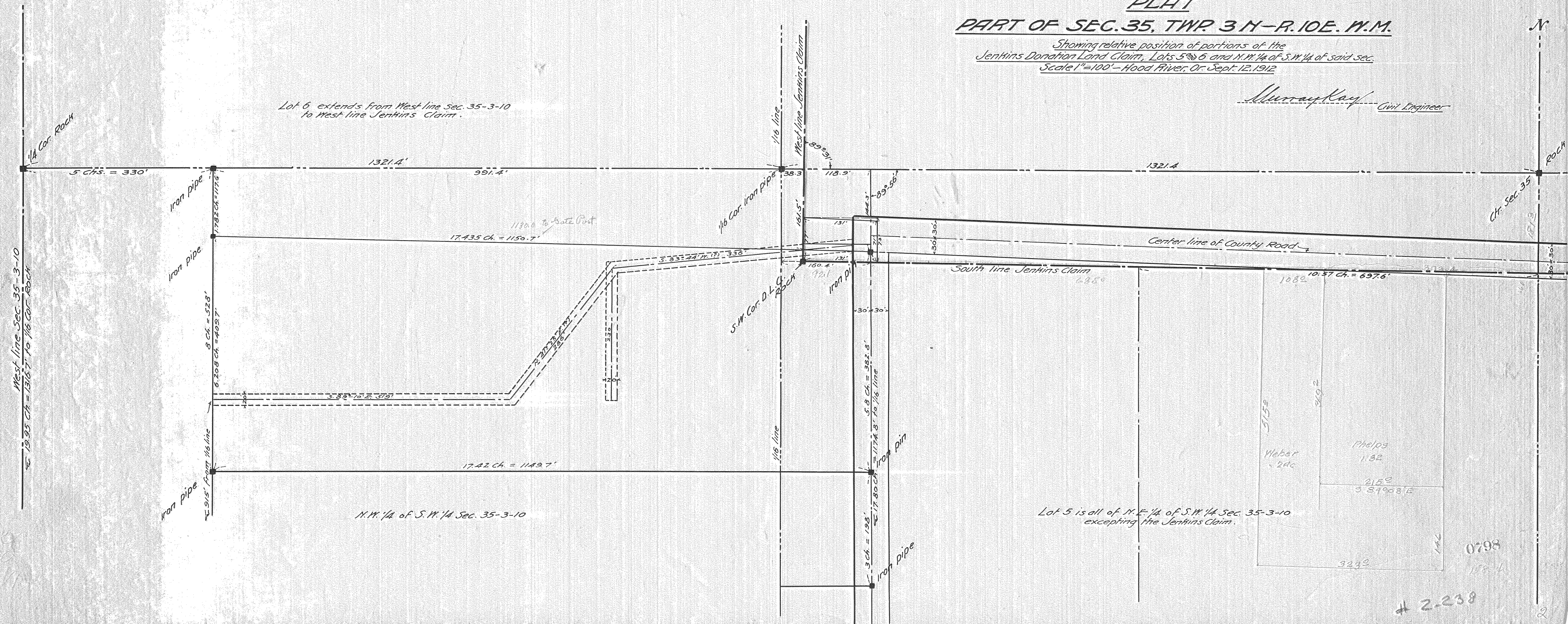
PLAT
PART OF SEC. 35, TWP. 3 N-R. 10 E. W.M.

*Showing relative position of portions of the
 Jenkins Donation Land Claim, Lots 5 and 6 and N.W. 1/4 of S.W. 1/4 of said sec.
 Scale 1"=100' - Hood River, Or. Sept. 12, 1912*

Murray Kay
 Civil Engineer

*Lot 6 extends from West line Sec. 35-3-10
 to West line Jenkins Claim.*

*West line Sec. 35-3-10
 19.95 Ch = 1316.7' to 1/16 Cor. Rock*



N.W. 1/4 of S.W. 1/4 Sec. 35-3-10

*Lot 5 is all of N.E. 1/4 of S.W. 1/4 Sec. 35-3-10
 excepting the Jenkins Claim.*

0798
 158.4
 # 2-238