

PLAT OF LOTS 1&2 THE JAMES W MCCORMICK PROPERTY
 NW1/4 SE1/4 SEC 35 T N R E WM
 HOOD RIVER COUNTY OREGON
 SURVEY NOV 1964
 SCALE: 1in = 40ft

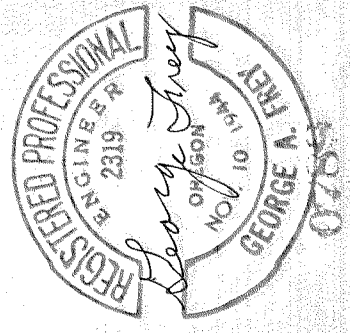
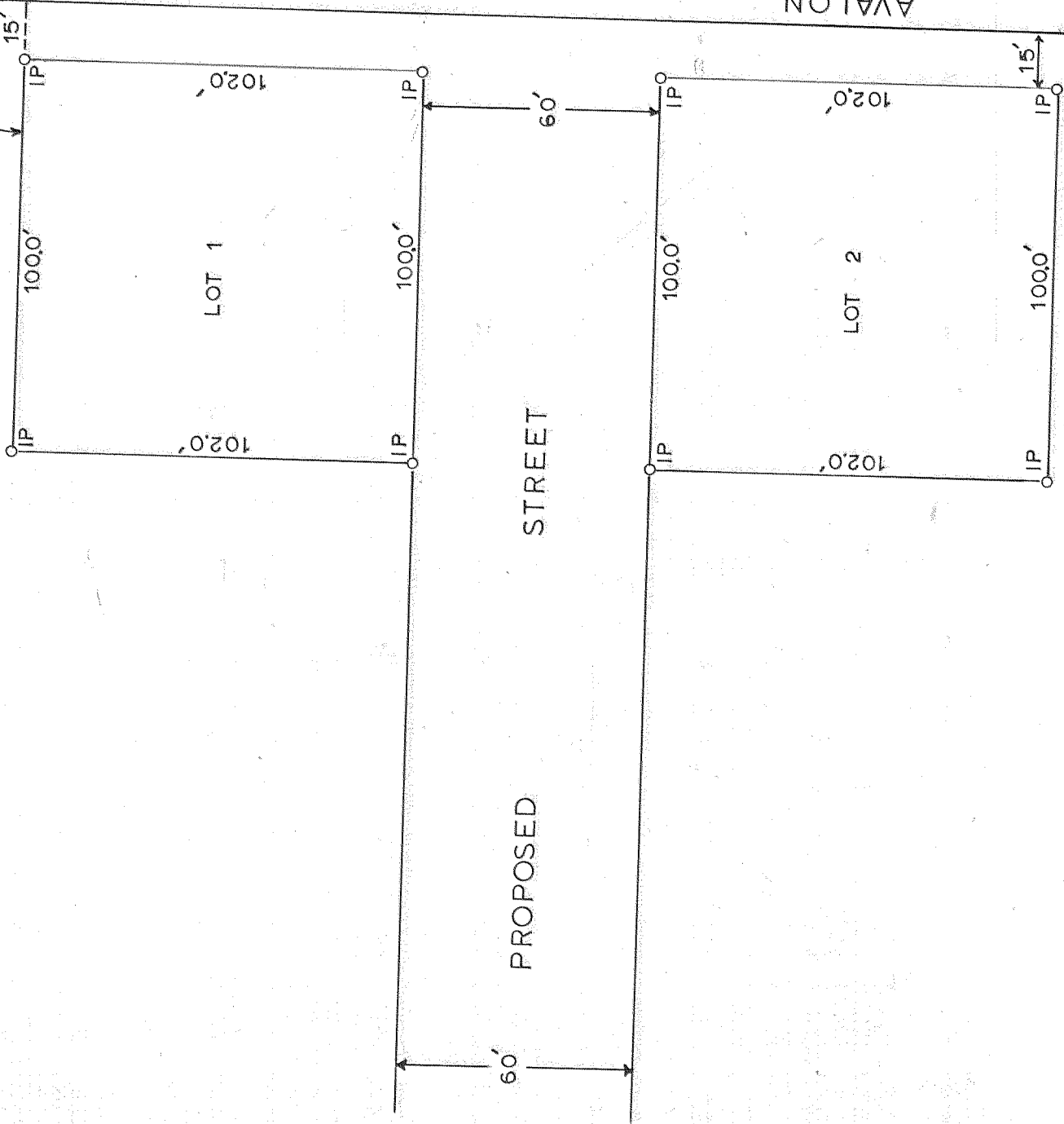
S LINE Wm JENKINS DLC 38

49.4' SE COR
 Wm JENKINS
 DLC No 38

97° 38'

668.25'

50° 06'



2-23-64