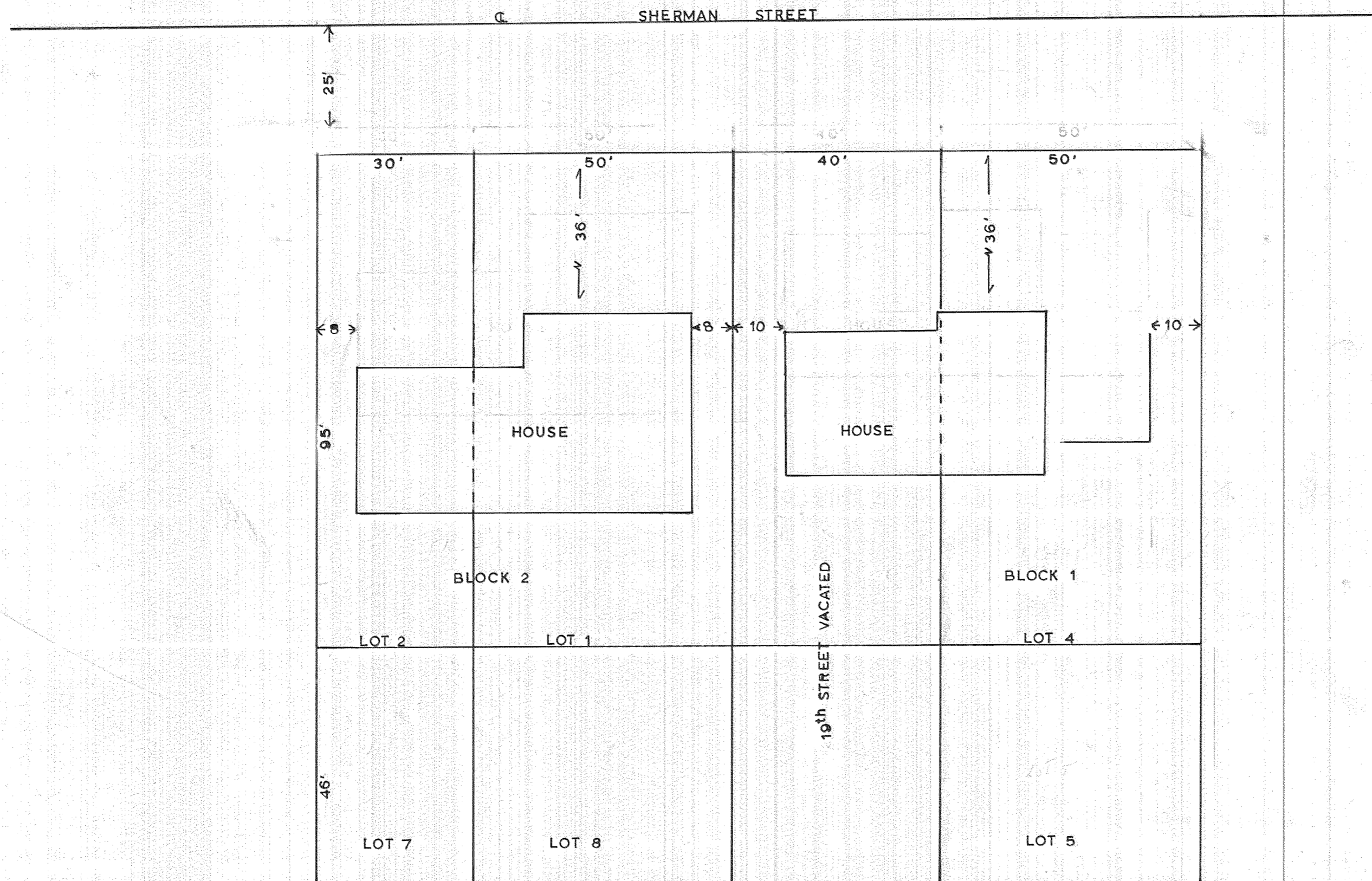


PLOT PLAN AND SURVEY



GORDON POUND PROPERTY  
COLUMBIA PARK ADDITION  
CITY OF HOOD RIVER, OREGON  
NW 1/4 NE 1/4 SEC 35 T3N R10 EAST WM  
SCALE 1" = 20'  
DATE: AUGUST 16 1963

