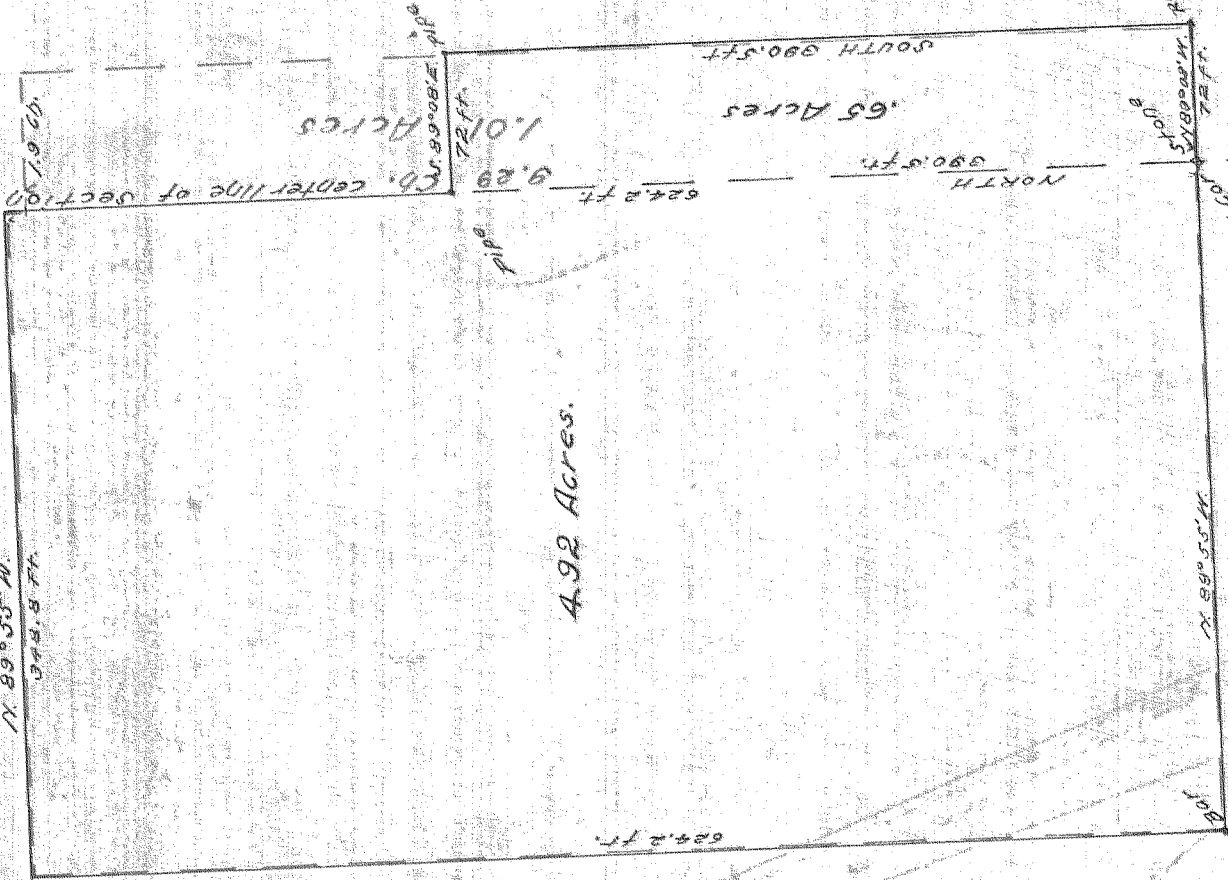


N. 89° 55' W.
344.8 FT.



4.92 Acres.

1.01 Acres

SOUTH 990.5 FT

NORTH 990.5 FT

N. 89° 55' W.

S. 89° 08' E

PLAT OF SURVEY

for
J. S. AINSWORTH

SEC. 35, T. 3 N., R. 10 E. W. 1/4

Scale 1" = 100 FT.

P. M. Morse
SURVEYOR

NOTE:
RED LINES = DEEDED BOUNDARIES
BLACK " = ACTUAL

0770

2-2349 10

NE 1/4