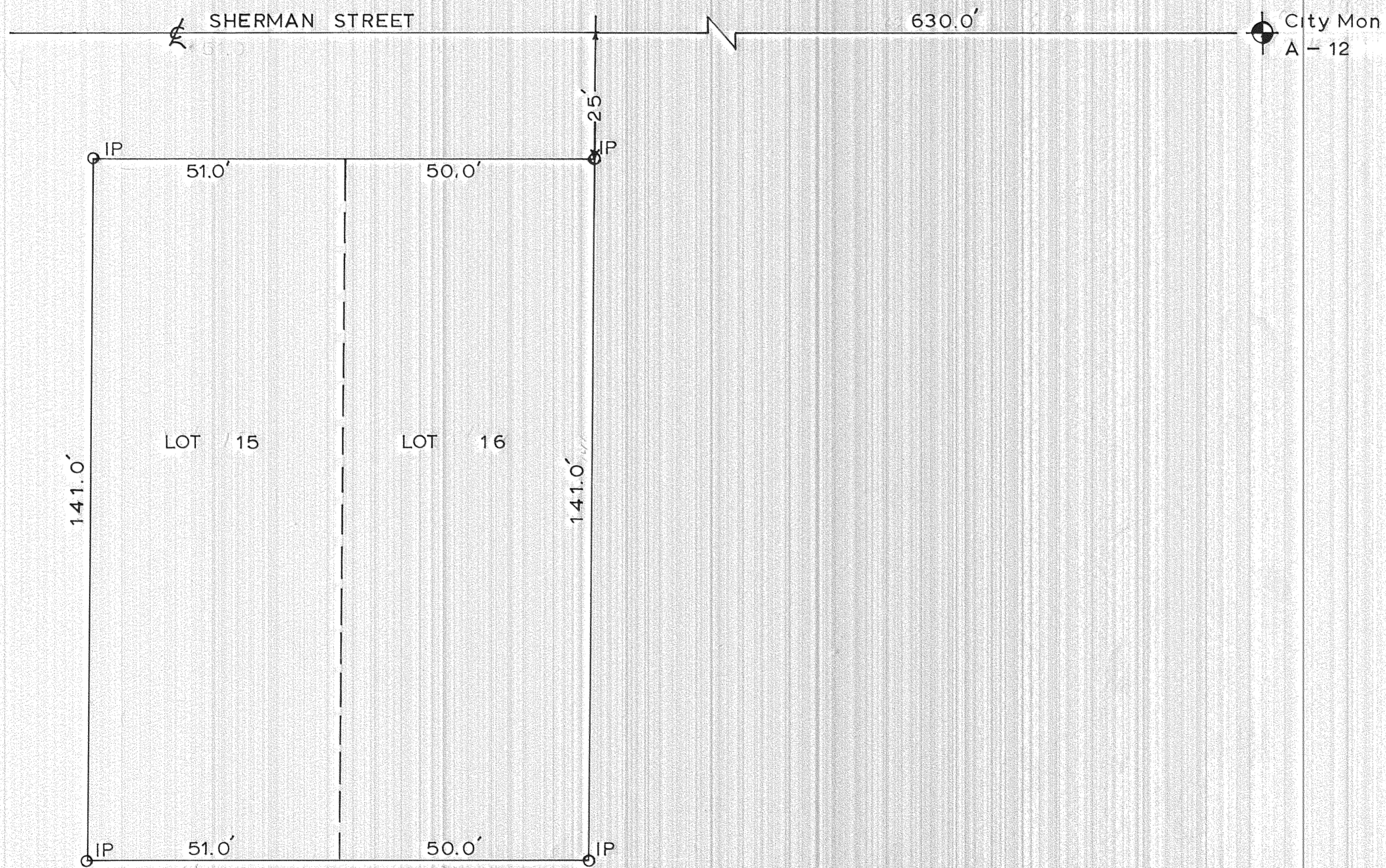


PLAT OF THE SMULLIN PROPERTY
LOTS 15 & 16 BLOCK 1
FAIRVIEW ADDITION TO THE
CITY OF HOOD RIVER OREGON
NW1/4 NE 1/4 SEC 35 T3N R10E WM
SURVEY OCT. 1963
SCALE: 1in = 20ft



0764