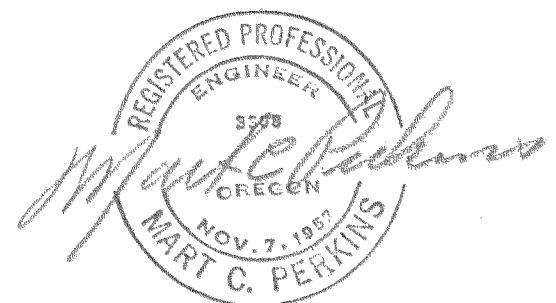
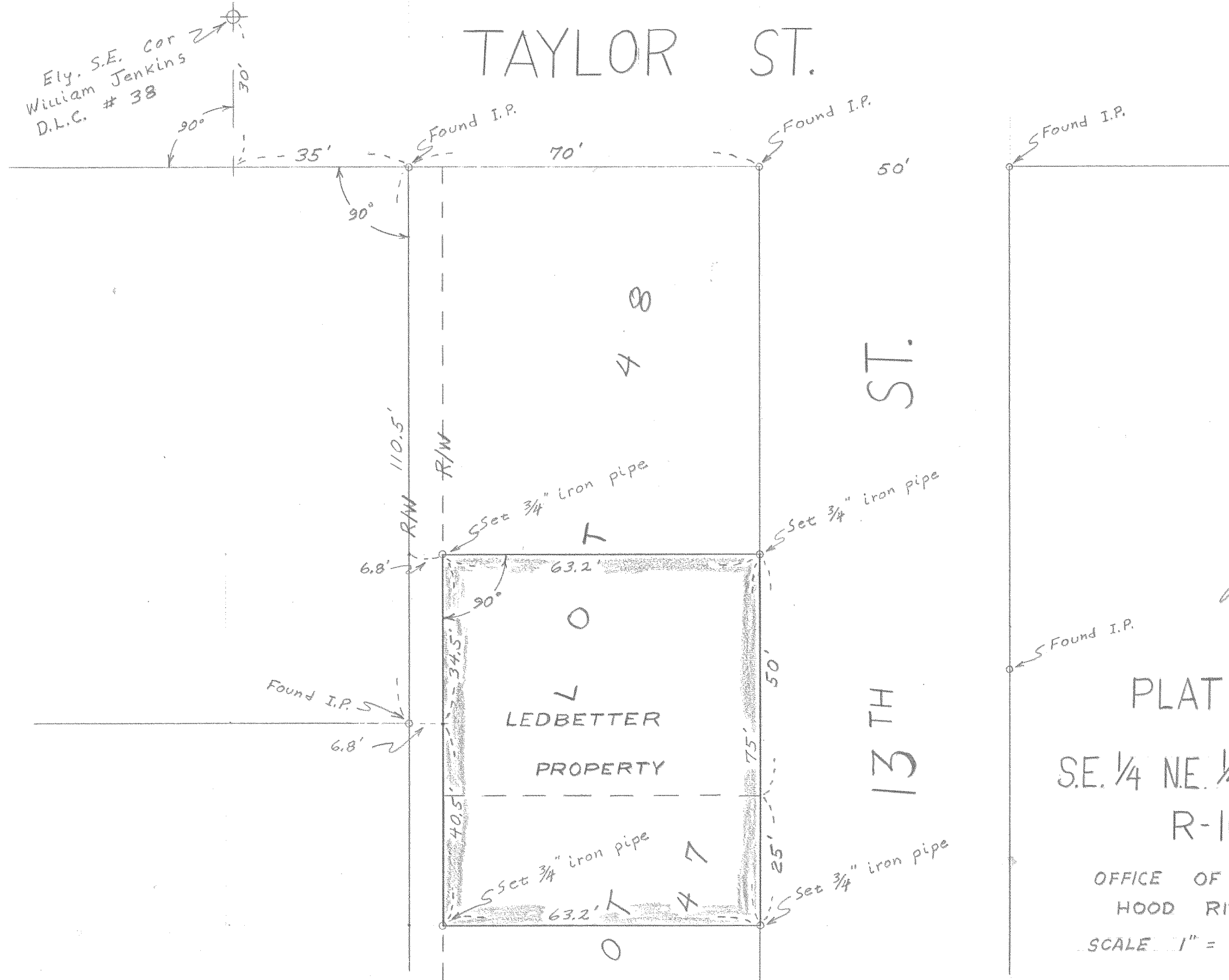


Ely. S.E. cor  
 William Jenkins  
 D.L.C. # 38

TAYLOR ST.



PLAT OF SURVEY  
 S.E. 1/4 NE. 1/4, SEC 35, T-3-N,  
 R-10-E, W.M.

OFFICE OF COUNTY ENGINEER  
 HOOD RIVER, OREGON  
 SCALE 1" = 20'      DATE :

0763