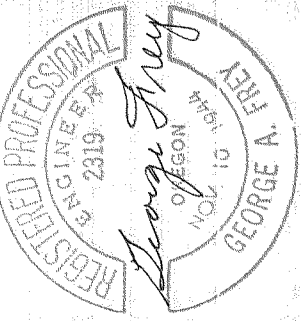
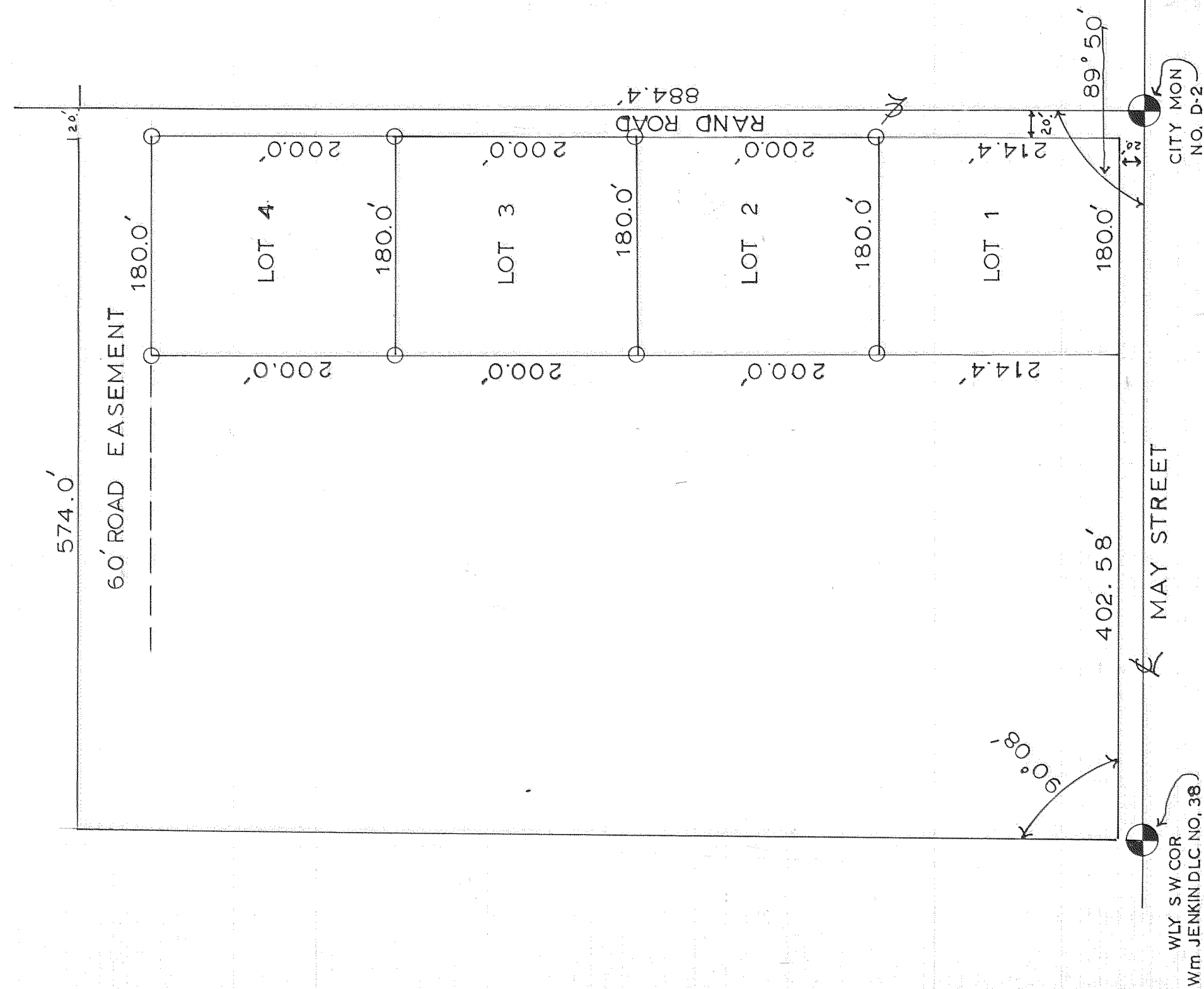
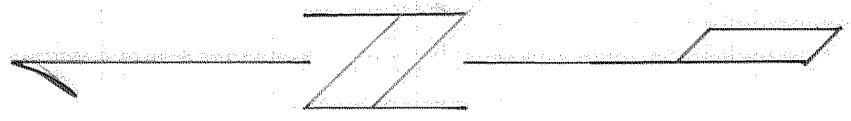


PLAT OF THE JULIA A. MORTON PROPERTY  
 LOT 20 PARADISE ACREAGE  
 SUBDIVISION SHOWING LOTS 1, 2, 3, & 4  
 IN  
 SEC 35 T3N R10E WM.  
 HOOD RIVER COUNTY OREGON  
 SURVEY FEB 1964  
 SCALE 1in = 100ft



WLY SW COR  
 Wm JENKINDLC NO. 38

1-64

0746

#2-291 //