

17th St

MAX ST

N.E. Cor. 0

421.7

~~458.5~~  
496.5

91°04'

118.5  
80°

Scale: 1in=100'

Sold to City  
240  
496.5

312.5  
280

230'

COUNTY GRAVEL PIT

RESERVOIR

OFFICE

SHED

TRUCK SHED

SHOP

Tel Co

22nd ST

2013

1936

253.2

LOT #7

Jennings

Bowlby

412.3

562.32

562.32

0.81 Ac

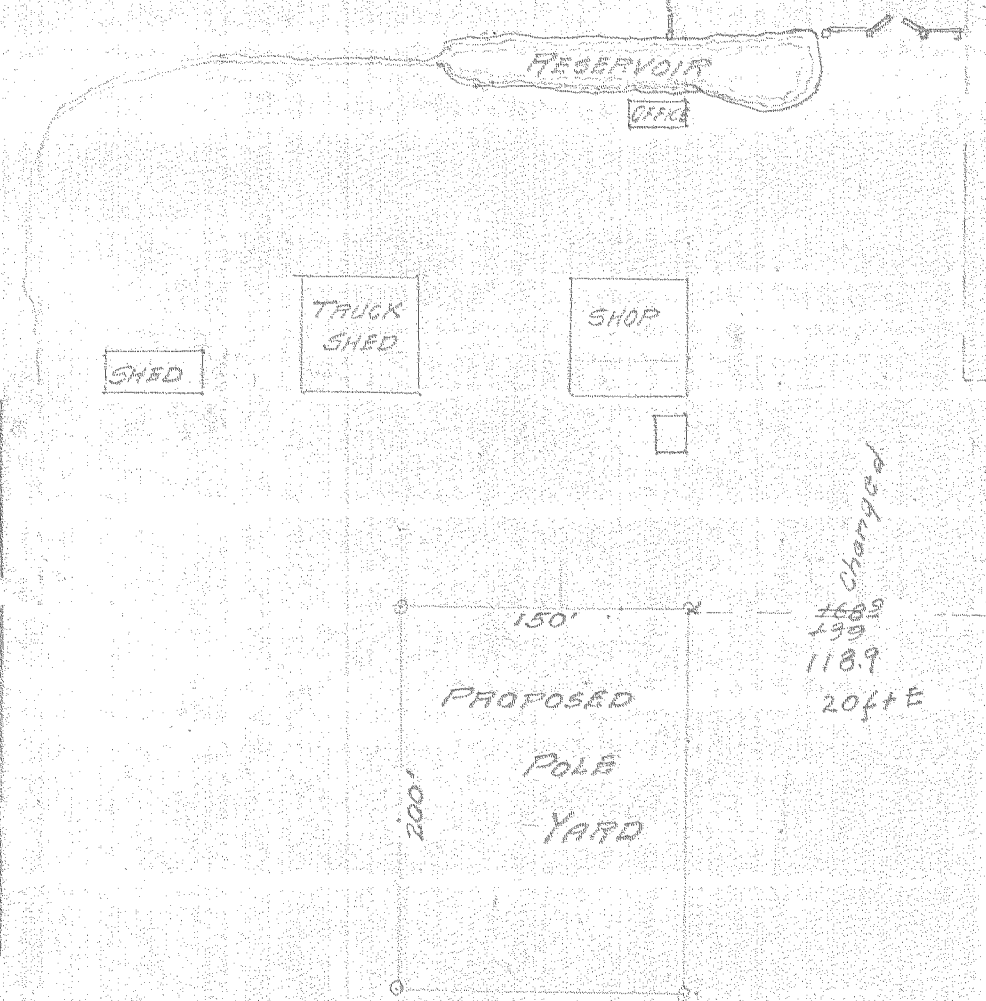
1 Ac

202.5  
991.5

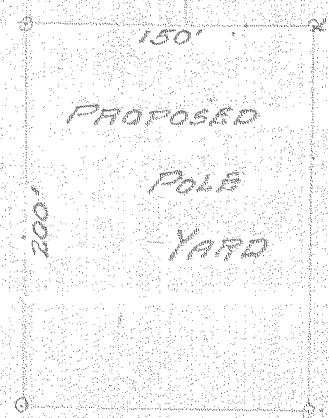
193.6

253.2

LOT #6  
Adams PARADISE ACRES



Change of  
168.9  
199  
118.9  
20ft E



17th St  
559.9  
564.6 } 10' South

0738

2-208

7