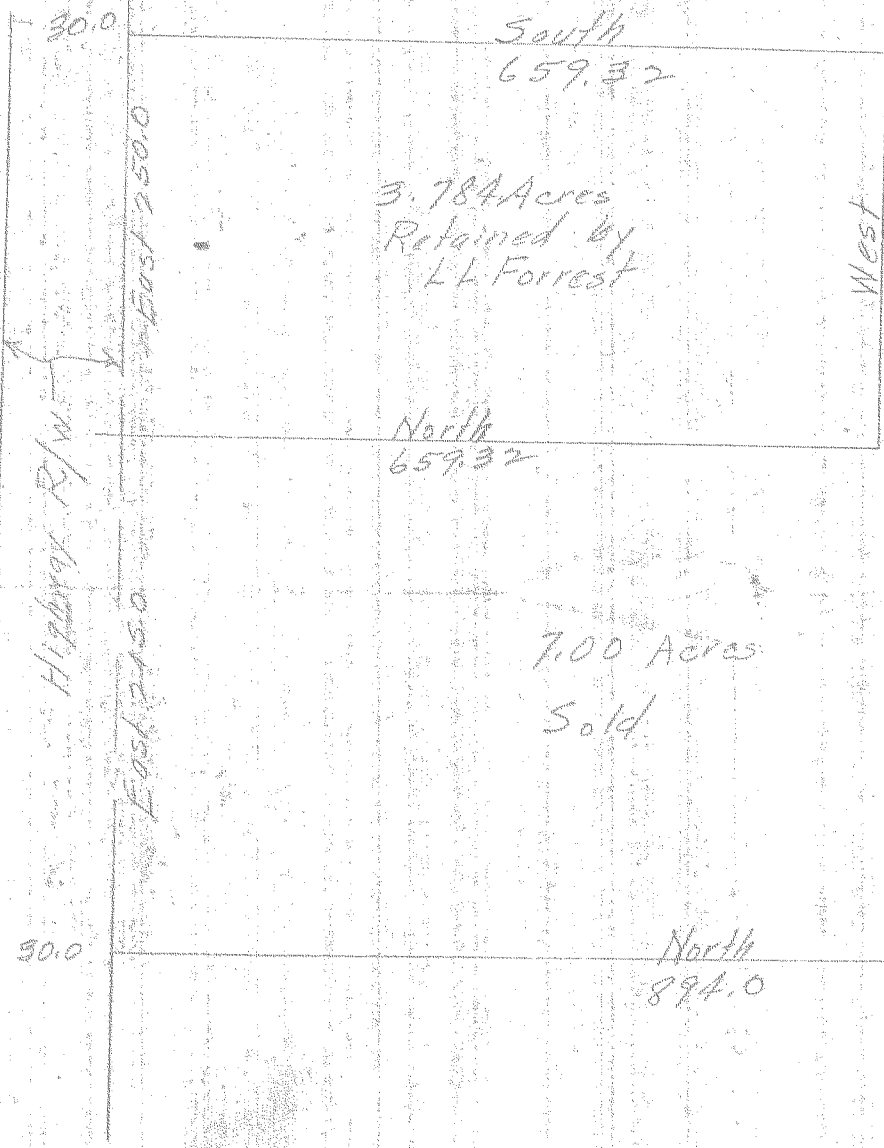


Sec 34 - T3N R10E WM

Hipbory R/W
East 250.0
East 250.0



South 234.68

W 3 1/2

West 165.0

South 165.0

West 165.0

North 165.0

West 165.0

1/4 Cor between Sec 27 and
34 T3N R10E
USGS Plate set
in Concrete

0728 #2-168