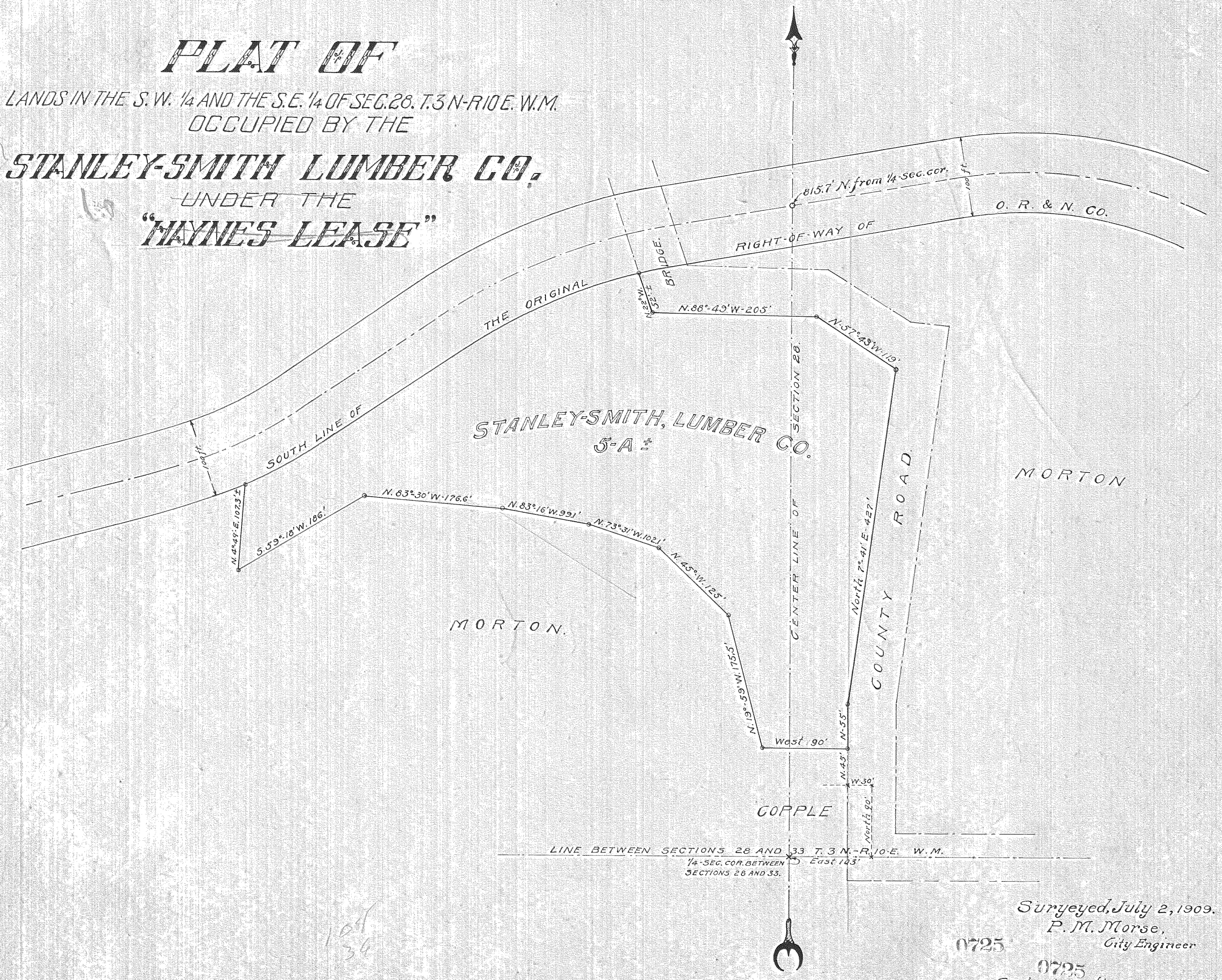


PLAT OF

LANDS IN THE S.W. 1/4 AND THE S.E. 1/4 OF SEC. 28, T. 3 N.-R. 10 E. W.M.
OCCUPIED BY THE

STANLEY-SMITH LUMBER CO.

UNDER THE "HAYNES LEASE"



104
34

Surveyed, July 2, 1909.
P. M. Morse,
City Engineer

0725

0725
Scale 1" = 100 ft.

#2-122 1